

Cleaved MMP-23 (Tyr79) Rabbit pAb

CatalogNo: YC0064 Orthogonal Validated 

Key Features

Host Species

- Rabbit

Reactivity

- Human, Mouse, Rat

Applications

- WB, ELISA

MW

- 36kD (Observed)

Isotype

- IgG

Storage

Storage* -15°C to -25°C/1 year (Do not lower than -25°C)

Formulation Liquid in PBS containing 50% glycerol, 0.5% BSA and 0.02% sodium azide.

Recommended Dilution Ratios

WB 1:500-1:2000

ELISA 1:20000

Not yet tested in other applications.

Basic Information

Clonality Polyclonal

Immunogen Information

Immunogen The antiserum was produced against synthesized peptide derived from human MMP23. AA range:60-109

Specificity Cleaved-MMP-23 (Y79) Polyclonal Antibody detects endogenous levels of fragment of activated MMP-23 protein resulting from cleavage adjacent to Y79.

Target Information

Gene name MMP23B

Protein Name Matrix metalloproteinase-23

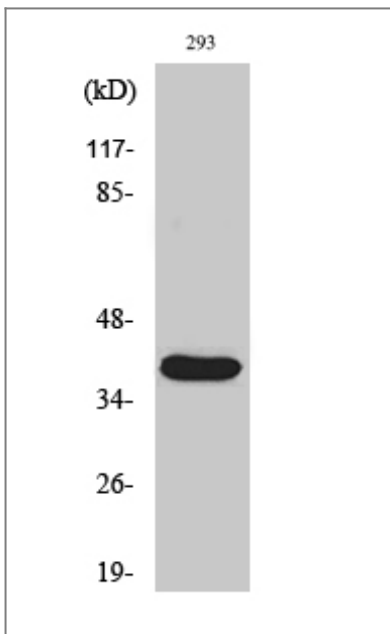
Organism	Gene ID	UniProt ID
Human	8510 ;	O75900 ;
Mouse	26561 ;	O88676 ;
Rat	94339 ;	O88272 ;

Cellular Localization Endoplasmic reticulum membrane ; Single-pass type II membrane protein . Membrane ; Single-pass type II membrane protein . A secreted form produced by proteolytic cleavage may also exist. .

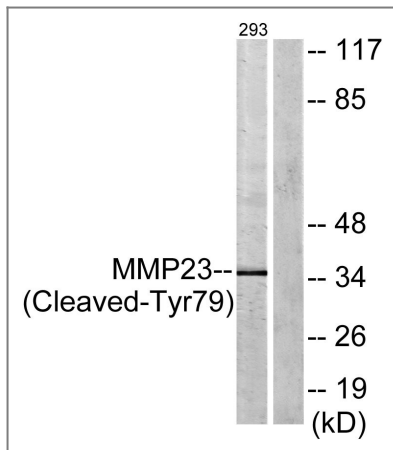
Tissue specificity Predominantly expressed in ovary, testis and prostate.

Function cofactor: Binds 1 zinc ion per subunit., enzyme regulation: Inhibited by TIMP2., Function: Protease., PTM: N-glycosylated., PTM: Proteolytic cleavage might yield an active form., similarity: Belongs to the peptidase M10A family., similarity: Contains 1 Ig-like C2-type (immunoglobulin-like) domain., subcellular location: A secreted form produced by proteolytic cleavage seems also to exist., tissue specificity: Predominantly expressed in ovary, testis and prostate.,

Validation Data



Western Blot analysis of various cells using Cleaved-MMP-23 (Y79) Polyclonal Antibody



Western blot analysis of lysates from 293 cells, treated with etoposide 25uM 1h, using MMP23 (Cleaved-Tyr79) Antibody. The lane on the right is blocked with the synthesized peptide.

Contact information

Orders: order@immunoway.com
 Support: tech@immunoway.com
 Telephone: 877-594-3616 (Toll Free), 408-747-0185
 Website: <http://www.immunoway.com>
 Address: 2200 Ringwood Ave San Jose, CA 95131 USA



Please scan the QR code to access additional product information:
Cleaved MMP-23 (Tyr79) Rabbit pAb

For Research Use Only. Not for Use in Diagnostic Procedures.

[Antibody](#) | [ELISA Kits](#) | [Protein](#) | [Reagents](#)