

Cleaved MMP-15 (Tyr132) Rabbit pAb

CatalogNo: YC0062

Orthogonal Validated 

Key Features

Host Species

- Rabbit

Reactivity

- Human, Monkey

Applications

- WB, ELISA

MW

- 61kD (Observed)

Isotype

- IgG

Recommended Dilution Ratios

WB 1:500-1:2000**ELISA 1:10000****Not yet tested in other applications.**

Storage

Storage*

-15°C to -25°C/1 year (Do not lower than -25°C)

Formulation

Liquid in PBS containing 50% glycerol, 0.5% BSA and 0.02% sodium azide.

Basic Information

Clonality

Polyclonal

Immunogen Information

Immunogen

The antiserum was produced against synthesized peptide derived from human MMP15. AA range: 113-162

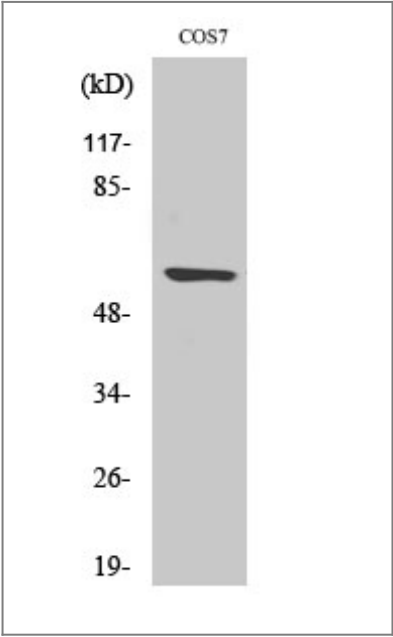
Specificity

Cleaved-MMP-15 (Y132) Polyclonal Antibody detects endogenous levels of fragment of activated MMP-15 protein resulting from cleavage adjacent to Y132.

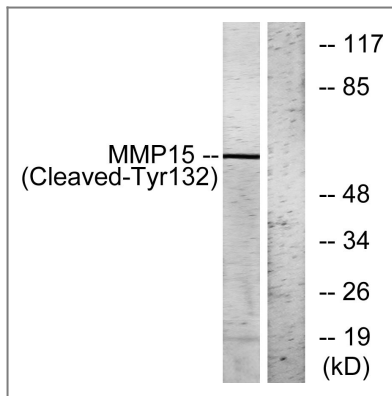
Target Information

Gene name	MMP15									
Protein Name	Matrix metalloproteinase-15									
	<table><tr><th>Organism</th><th>Gene ID</th><th>UniProt ID</th></tr><tr><td>Human</td><td>4324;</td><td>P51511;</td></tr><tr><td>Mouse</td><td></td><td>O54732;</td></tr></table>	Organism	Gene ID	UniProt ID	Human	4324 ;	P51511 ;	Mouse		O54732 ;
Organism	Gene ID	UniProt ID								
Human	4324 ;	P51511 ;								
Mouse		O54732 ;								
Cellular Localization	Membrane ; Single-pass type I membrane protein ; Extracellular side .									
Tissue specificity	Appeared to be synthesized preferentially in liver, placenta, testis, colon and intestine. Substantial amounts are also detected in pancreas, kidney, lung, heart and skeletal muscle.									
Function	cofactor: Binds 1 zinc ion per subunit., cofactor: Calcium., Domain: The conserved cysteine present in the cysteine-switch motif binds the catalytic zinc ion, thus inhibiting the enzyme. The dissociation of the cysteine from the zinc ion upon the activation-peptide release activates the enzyme., Function: Endopeptidase that degrades various components of the extracellular matrix. May activate progelatinase A., PTM: The precursor is cleaved by a furin endopeptidase., similarity: Belongs to the peptidase M10A family., similarity: Contains 4 hemopexin-like domains., tissue specificity: Appeared to be synthesized preferentially in liver, placenta, testis, colon and intestine. Substantial amounts are also detected in pancreas, kidney, lung, heart and skeletal muscle.,									

Validation Data



Western Blot analysis of various cells using Cleaved-MMP-15 (Y132) Polyclonal Antibody



Western blot analysis of lysates from COS7 cells, treated with etoposide 25uM 1h, using MMP15 (Cleaved-Tyr132) Antibody. The lane on the right is blocked with the synthesized peptide.

Contact information

Orders: order@immunoway.com
 Support: tech@immunoway.com
 Telephone: 877-594-3616 (Toll Free), 408-747-0185
 Website: <http://www.immunoway.com>
 Address: 2200 Ringwood Ave San Jose, CA 95131 USA



Please scan the QR code to access additional product information:
Cleaved MMP-15 (Tyr132) Rabbit pAb

For Research Use Only. Not for Use in Diagnostic Procedures.

[Antibody](#) | [ELISA Kits](#) | [Protein](#) | [Reagents](#)