

Cleaved Cathepsin G (Ile21) Rabbit pAb

CatalogNo: YC0044

Key Features

Host Species

- Rabbit

Reactivity

- Human, Mouse, Rat

Applications

- WB, ELISA

MW

- 28kD, 26kD (Observed)

Isotype

- IgG

Storage

Storage* -15°C to -25°C/1 year (Do not lower than -25°C)

Formulation Liquid in PBS containing 50% glycerol, 0.5% BSA and 0.02% sodium azide.

Recommended Dilution Ratios

WB 1:500-1:2000

ELISA 1:20000

Not yet tested in other applications.

Basic Information

Clonality Polyclonal

Immunogen Information

Immunogen The antiserum was produced against synthesized peptide derived from human CATG. AA range: 2-51

Specificity Cleaved-Cathepsin G (I21) Polyclonal Antibody detects endogenous levels of fragment of activated Cathepsin G protein resulting from cleavage adjacent to I21.

Target Information

Gene name CTSG

Protein Name Cathepsin G

Organism	Gene ID	UniProt ID
Human	1511 ;	P08311 ;
Mouse	13035 ;	P28293 ;
Rat		P17977 ;

Cellular Localization

Cell membrane ; Peripheral membrane protein . Cytoplasmic granule . Secreted . Cytoplasm, cytosol . Lysosome . Nucleus . Secreted by activated neutrophils (PubMed:3390156). Detected in synovial fluid (PubMed:32144329). Localizes to lysosomes in B cells where it is not endogenously synthesized but is internalized from the cell membrane (PubMed:15100291). Localizes to the nucleus during apoptosis (PubMed:11259672). .

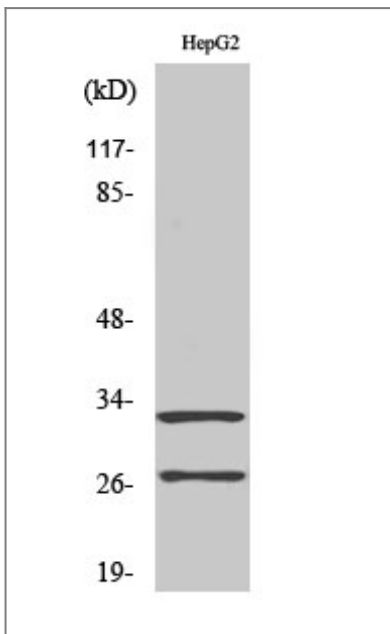
Tissue specificity

Expressed in neutrophils (at protein level) (PubMed:3799965). Expressed in B cells (PubMed:15100291).

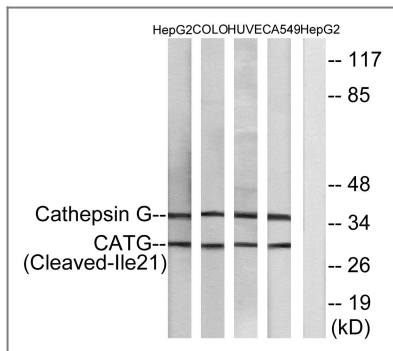
Function

Catalytic activity:Specificity similar to chymotrypsin C.,enzyme regulation:Inhibited by soybean trypsin inhibitor, benzamidine, the synthetic peptide R13K, Z-Gly-Leu-Phe-CH2Cl and phenylmethylsulfonyl fluoride. Inhibited by LPS from P.aeruginosa but not by LPS from S.minnesota.,Function:Serine protease with trypsin- and chymotrypsin-like specificity. Has antibacterial activity against the Gram-negative bacterium P.aeruginosa, antibacterial activity is inhibited by LPS from P.aeruginosa, Z-Gly-Leu-Phe-CH2Cl and phenylmethylsulfonyl fluoride.,similarity:Belongs to the peptidase S1 family.,similarity:Contains 1 peptidase S1 domain.,

Validation Data



Western Blot analysis of various cells using Cleaved-Cathepsin G (I21) Polyclonal Antibody



Western blot analysis of lysates from HepG2, COLO, HUVEC, and A549 cells, using CATG (Cleaved-Ile21) Antibody. The lane on the right is blocked with the synthesized peptide.

Contact information

Orders: order@immunoway.com
 Support: tech@immunoway.com
 Telephone: 877-594-3616 (Toll Free), 408-747-0185
 Website: <http://www.immunoway.com>
 Address: 2200 Ringwood Ave San Jose, CA 95131 USA



Please scan the QR code to access additional product information:
Cleaved Cathepsin G (Ile21) Rabbit pAb

For Research Use Only. Not for Use in Diagnostic Procedures.

[Antibody](#) | [ELISA Kits](#) | [Protein](#) | [Reagents](#)