

Cleaved Aggrecan (Asp369) Rabbit pAb

CatalogNo: YC0042

Orthogonal Validated 

Key Features

Host Species

- Rabbit

Reactivity

- Human,Rat

Applications

- WB,IHC,IF,ELISA

MW

- 44kD (Observed)

Isotype

- IgG

Storage

Storage*

-15°C to -25°C/1 year(Do not lower than -25°C)

Formulation

Liquid in PBS containing 50% glycerol, 0.5% BSA and 0.02% sodium azide.

Recommended Dilution Ratios

WB 1:500-1:2000

IHC 1:100-1:300

ELISA 1:20000

IF 1:50-200

Basic Information

Clonality

Polyclonal

Immunogen Information

Immunogen

The antiserum was produced against synthesized peptide derived from human Aggrecan. AA range:320-369

Specificity

Cleaved-Aggrecan (D369) Polyclonal Antibody detects endogenous levels of fragment of activated Aggrecan protein resulting from cleavage adjacent to D369.

Target Information

Gene name ACAN AGC1 CSPG1 MSK16

Protein Name Aggrecan core protein

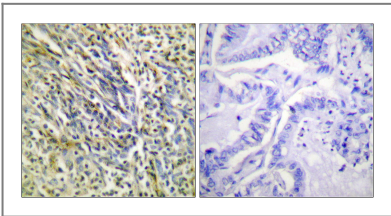
Organism	Gene ID	UniProt ID
Human	176;	P16112;
Mouse	11595;	Q61282;
Rat	58968;	P07897;

Cellular Localization Secreted, extracellular space, extracellular matrix .

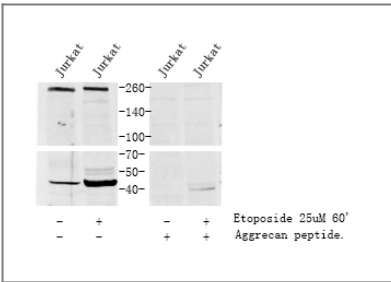
Tissue specificity Restricted to cartilages.

Function This proteoglycan is a major component of extracellular matrix of cartilagenous tissues. A major function of this protein is to resist compression in cartilage. It binds avidly to hyaluronic acid via an N-terminal globular region.

Validation Data



Immunohistochemistry analysis of paraffin-embedded human lung carcinoma tissue, using Aggrecan (Cleaved-Asp369) Antibody. The picture on the right is blocked with the synthesized peptide.



Western blot analysis of lysates from various cells, using primary antibody dilution at 1:1000.

Contact information

Orders: order@immunoway.com
Support: tech@immunoway.com
Telephone: 877-594-3616 (Toll Free), 408-747-0185
Website: <http://www.immunoway.com>
Address: 2200 Ringwood Ave San Jose, CA 95131 USA



Please scan the QR code
to access additional
product information:
**Cleaved Aggrecan
(Asp369) Rabbit
pAb**

For Research Use Only. Not for Use in Diagnostic Procedures.

[Antibody](#) | [ELISA Kits](#) | [Protein](#) | [Reagents](#)