

# Mouse/Rabbit Sextuple-Target Seven-Color Fluorescence Detection Kit

CatalogNo: RS0039

## | Key Features

### Applications

- IF, mIHC

## | Recommended Dilution Ratios

Ready to use

## | Storage

**Storage\***

See datasheet

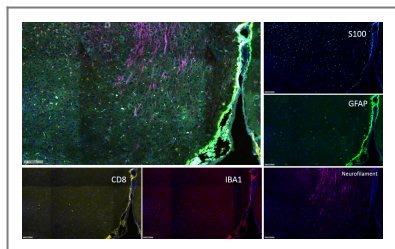
## | Basic Information

## | Immunogen Information

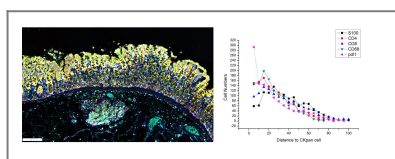
## | Target Information

Protein Name

## | Validation Data



Fluorescence multiplex immunohistochemical analysis of Mouse brain tissue (formalin-fixed paraffin-embedded section). The immunostaining was performed by Sextuple-Fluorescence kit (RS0039, Immunoway). GFAP mouse mAb(YM4426 Immunoway) green, S100 mouse mAb(YM6987 Immunoway) cyan, Neurofilament mouse mAb(YM6897 Immunoway) purple, Iba 1 mouse mAb(YM4765 Immunoway) red, CD8 a mouse mAb(YM4815 Immunoway) yellow. The section was incubated in 5 rounds of staining; sequentially for Anti-antibodies; each using a separate fluorescent tyramide signal amplification system. EDTA based antigen retrieval (Immunoway YS0004, pH 9.0, 20 minutes) was used in between rounds of tyramide signal amplification to remove the antibody from the previous round, to avoid any cross-reactivity. DAPI (dark blue) was used as a nuclear counter stain. Microscopy and pseudocoloring of individual dyes was performed using a Slideviewer Imaging System (Excilone).



Fluorescence multiplex immunohistochemical analysis of Mouse brain tissue (formalin-fixed paraffin-embedded section). The immunostaining was performed by Sextuple-Fluorescence kit (RS0039, Immunoway). Human colon carcinoma was tested by S100, CD4, CD8, CD68, PDL1, CKpan mouse mAb with 6 different TSA Fluorescence reagent. Numbers of functional cells (S100, CD4, CD8, CD68, PDL1) was calculated at every 5µm within 100µm range around each tumor cell(CKpan+). Microscopy and pseudocoloring of individual dyes was performed using a Slideviewer Imaging System (Excilone).

## Contact information

Orders: order@immunoway.com  
 Support: tech@immunoway.com  
 Telephone: 877-594-3616 (Toll Free), 408-747-0185  
 Website: <http://www.immunoway.com>  
 Address: 2200 Ringwood Ave San Jose, CA 95131 USA



Please scan the QR code to access additional product information:  
**Mouse/Rabbit  
 Sextuple-Target  
 Seven-Color  
 Fluorescence  
 Detection Kit**

For Research Use Only. Not for Use in Diagnostic Procedures.

[Antibody](#) | [ELISA Kits](#) | [Protein](#) | [Reagents](#)