

# Mouse/Rabbit Quintuple-Target Six-Color Fluorescence Detection Kit

CatalogNo: RS0038

## | Key Features

### Applications

- IF, mIHC

## | Recommended Dilution Ratios

Ready to use

## | Storage

<b>Storage*</b>	See datasheet
-----------------	---------------

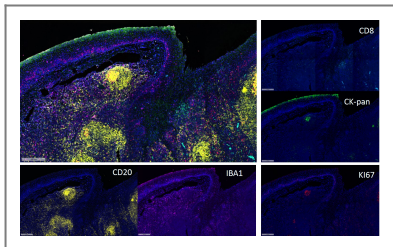
## | Basic Information

## | Immunogen Information

## | Target Information

Protein Name

## | Validation Data



Fluorescence multiplex immunohistochemical analysis of Human tonsil tissue (formalin-fixed paraffin-embedded section). The immunostaining was performed by Pentuple-Fluorescence kit (RS0038, Immunoway). CK-pan mouse mAb(YM6815 Immunoway) green, Ki-67 rabbit mAb(YM7002 Immunoway) red, Iba 1 mouse mAb(YM4765 Immunoway) purple, CD8 a mouse mAb(YM4815 Immunoway) cyan, CD20 mouse mAb(YM4814 Immunoway) yellow, The section was incubated in 5 rounds of staining; sequentially for Anti-antibodies; each using a separate fluorescent tyramide signal amplification system. EDTA based antigen retrieval (Immunoway YS0004, pH 9.0, 20 minutes) was used in between rounds of tyramide signal amplification to remove the antibody from the previous round, to avoid any cross-reactivity. DAPI (dark blue) was used as a nuclear counter stain. Microscopy and pseudocoloring of individual dyes was performed using a Slideviewer Imaging System (Excilone).

## Contact information

Orders: [order@immunoway.com](mailto:order@immunoway.com)  
 Support: [tech@immunoway.com](mailto:tech@immunoway.com)  
 Telephone: 877-594-3616 (Toll Free), 408-747-0185  
 Website: <http://www.immunoway.com>  
 Address: 2200 Ringwood Ave San Jose, CA 95131 USA



Please scan the QR code to access additional product information:  
**Mouse/Rabbit  
 Quintuple-Target  
 Six-Color  
 Fluorescence  
 Detection Kit**

For Research Use Only. Not for Use in Diagnostic Procedures.

[Antibody](#) | [ELISA Kits](#) | [Protein](#) | [Reagents](#)