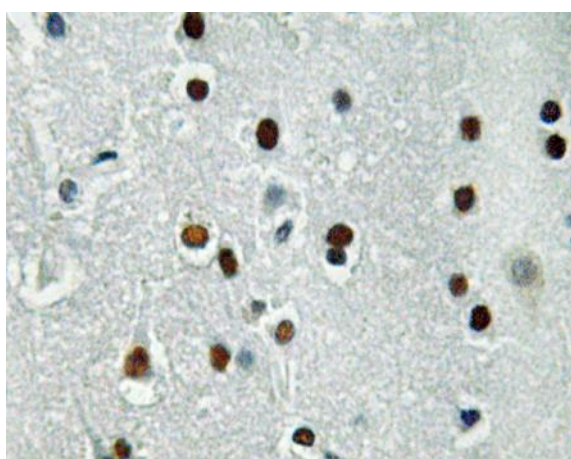


ASCL1 Polyclonal Antibody

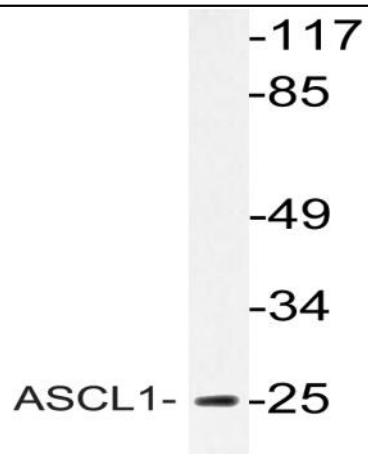
Catalog No :	YT0367
Reactivity :	Human;Mouse;Rat
Applications :	WB;IHC;IF;ELISA
Target :	ASCL1
Gene Name :	ASCL1
Protein Name :	Achaete-scute homolog 1
Human Gene Id :	429
Human Swiss Prot No :	P50553
Mouse Gene Id :	17172
Mouse Swiss Prot No :	Q02067
Rat Gene Id :	64186
Rat Swiss Prot No :	P19359
Immunogen :	The antiserum was produced against synthesized peptide derived from human ASCL1. AA range:109-158
Specificity :	ASCL1 Polyclonal Antibody detects endogenous levels of ASCL1 protein.
Formulation :	Liquid in PBS containing 50% glycerol, 0.5% BSA and 0.02% sodium azide.
Source :	Polyclonal, Rabbit,IgG
Dilution :	WB 1:500 - 1:2000. IHC 1:100 - 1:300. ELISA: 1:40000.. IF 1:50-200
Purification :	The antibody was affinity-purified from rabbit antiserum by affinity-chromatography using epitope-specific immunogen.

Concentration :	1 mg/ml
Storage Stability :	-15°C to -25°C/1 year(Do not lower than -25°C)
Observed Band :	25kD
Background :	achaete-scute family bHLH transcription factor 1(ASCL1) Homo sapiens This gene encodes a member of the basic helix-loop-helix (BHLH) family of transcription factors. The protein activates transcription by binding to the E box (5'-CANNTG-3'). Dimerization with other BHLH proteins is required for efficient DNA binding. This protein plays a role in the neuronal commitment and differentiation and in the generation of olfactory and autonomic neurons. Mutations in this gene may contribute to the congenital central hypoventilation syndrome (CCHS) phenotype in rare cases. [provided by RefSeq, Jul 2008],
Function :	function:May play a role at early stages of development of specific neural lineages in most regions of the CNS, and of several lineages in the PNS. Essential for the generation of olfactory and autonomic neurons. Activates transcription by binding to the E box (5'-CANNTG-3').,similarity:Contains 1 basic helix-loop-helix (bHLH) domain.,subunit:Efficient DNA binding requires dimerization with another bHLH protein. Forms a heterodimer with TCF3.,
Subcellular Location :	Nucleus .
Expression :	Lung,Thyroid carcinoma,

Products Images



Immunohistochemistry analysis of ASCL1 antibody in paraffin-embedded human brain tissue.



Western blot analysis of lysate from Jurkat cells, using ASCL1 antibody.