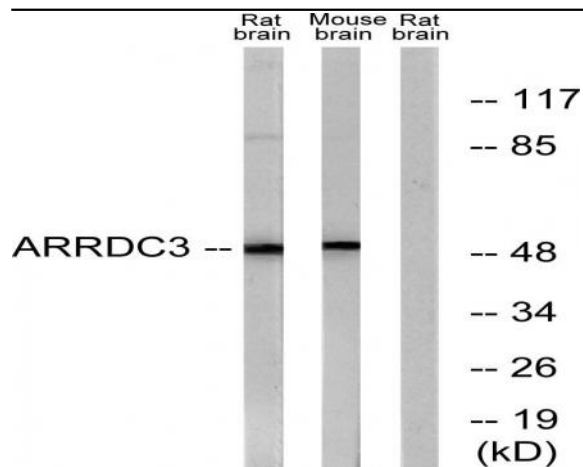


ARRDC3 Polyclonal Antibody

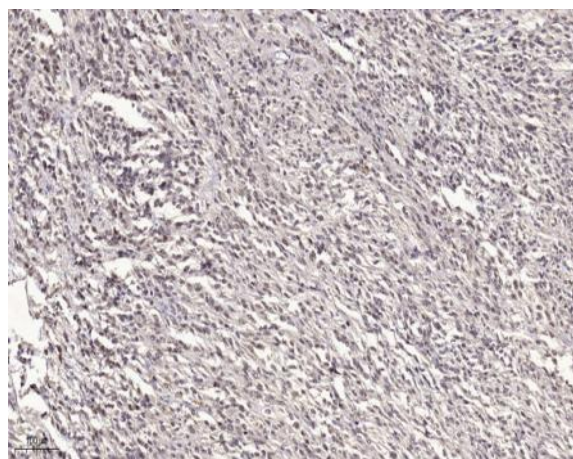
Catalog No :	YT0340
Reactivity :	Human;Mouse;Rat
Applications :	WB;IHC;IF;ELISA
Target :	ARRDC3
Gene Name :	ARRDC3
Protein Name :	Arrestin domain-containing protein 3
Human Gene Id :	57561
Human Swiss Prot No :	Q96B67
Mouse Gene Id :	105171
Mouse Swiss Prot No :	Q7TPQ9
Rat Gene Id :	309945
Rat Swiss Prot No :	Q6TXF1
Immunogen :	The antiserum was produced against synthesized peptide derived from human ARRDC3. AA range:365-414
Specificity :	ARRDC3 Polyclonal Antibody detects endogenous levels of ARRDC3 protein.
Formulation :	Liquid in PBS containing 50% glycerol, 0.5% BSA and 0.02% sodium azide.
Source :	Polyclonal, Rabbit,IgG
Dilution :	WB 1:500 - 1:2000. IHC 1:100 - 1:300. ELISA: 1:20000.. IF 1:50-200
Purification :	The antibody was affinity-purified from rabbit antiserum by affinity-chromatography using epitope-specific immunogen.

Concentration :	1 mg/ml
Storage Stability :	-15°C to -25°C/1 year(Do not lower than -25°C)
Observed Band :	46kD
Background :	This gene encodes a member of the arrestin family of proteins, which regulate G protein-mediated signaling. The encoded protein is thought to act as a regulator of breast cancer growth and progression by binding to a phosphorylated form of integrin beta4, a tumor-related antigen, targeting the integrin for internalization and degradation. [provided by RefSeq, Jul 2016],
Function :	induction:By troglitazone and pioglitazone (selective PPARG agonists), by prostaglandin J2 (PGJ2) and by L165,041 (a PPARD ligand), by vitamin D3 and, to a lesser extent, by PMA (phorbol myristate acetate) in the promyelocytic leukemia HL-60 cells. No induction by retinoic acid, nor by clofibrate (a specific PPARG agonist).,similarity:Belongs to the arrestin family.,subcellular location:Associated with plasma membrane, as well as with endosomes and lysosomes during endocytosis.,subunit:Does not bind TXN (thioredoxin).,tissue specificity:Highly expressed in skeletal muscle, placenta, kidney, adrenal gland, lymph node, mammary gland, thyroid, and trachea. Very low levels in colon, thymus, spleen, small intestine, bladder and bone marrow. Strong expression in differentiated adipocytes compared to preadipocytes.,
Subcellular Location :	Cytoplasm . Cell membrane ; Peripheral membrane protein ; Cytoplasmic side . Lysosome . Endosome . Early endosome . Associated with plasma membrane, as well as with endosomes and lysosomes during endocytosis (PubMed:16269462, PubMed:23208550, PubMed:20559325). .
Expression :	Highly expressed in skeletal muscle, placenta, kidney, lung, liver, blood, adrenal gland, lymph node, mammary gland, thyroid, and trachea (PubMed:16269462, PubMed:21982743). Very low levels in colon, thymus, spleen, small intestine, bladder and bone marrow (PubMed:16269462). Strong expression in differentiated adipocytes compared to preadipocytes (PubMed:16269462). Detected in omental fat and subcutaneous fat tissue (PubMed:21982743).

Products Images



Western blot analysis of lysates from rat brain and mouse brain cells, using ARRDC3 Antibody. The lane on the right is blocked with the synthesized peptide.



Immunohistochemical analysis of paraffin-embedded human small intestinal carcinoma tissue. 1,primary Antibody was diluted at 1:200(4° overnight). 2, Sodium citrate pH 6.0 was used for antigen retrieval(>98° C,20min). 3,Secondary antibody was diluted at 1:200