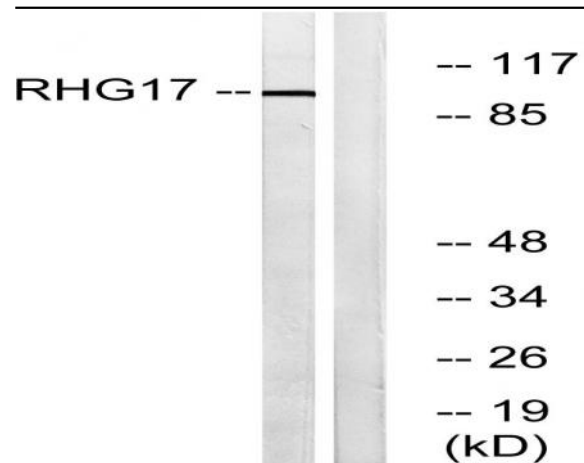


ARHGAP17 Polyclonal Antibody

Catalog No :	YT0316
Reactivity :	Human;Mouse;Rat
Applications :	WB;ELISA
Target :	ARHGAP17
Fields :	>>Tight junction
Gene Name :	ARHGAP17
Protein Name :	Rho GTPase-activating protein 17
Human Gene Id :	55114
Human Swiss Prot No :	Q68EM7
Mouse Gene Id :	70497
Mouse Swiss Prot No :	Q3UIA2
Rat Gene Id :	63994
Rat Swiss Prot No :	Q99N37
Immunogen :	The antiserum was produced against synthesized peptide derived from human RHG17. AA range:331-380
Specificity :	ARHGAP17 Polyclonal Antibody detects endogenous levels of ARHGAP17 protein.
Formulation :	Liquid in PBS containing 50% glycerol, 0.5% BSA and 0.02% sodium azide.
Source :	Polyclonal, Rabbit,IgG
Dilution :	WB 1:500 - 1:2000. ELISA: 1:40000. Not yet tested in other applications.

Purification :	The antibody was affinity-purified from rabbit antiserum by affinity-chromatography using epitope-specific immunogen.
Concentration :	1 mg/ml
Storage Stability :	-15°C to -25°C/1 year(Do not lower than -25°C)
Observed Band :	100kD
Background :	RICH1 is a GTPase-activating protein (GAP). GAPs stimulate the intrinsic GTP hydrolysis of small G proteins, such as RHOA (MIM 165390), RAC1 (MIM 602048), and CDC42 (MIM 116952).[supplied by OMIM, Apr 2004],
Function :	domain:The BAR domain mediates the interaction with the coiled coil domain of AMOT, leading to its recruitment to tight junctions.,function:Rho GTPase-activating protein involved in the maintenance of tight junction by regulating the activity of CDC42, thereby playing a central role in apical polarity of epithelial cells. Specifically acts as a GTPase activator for the CDC42 GTPase by converting it to an inactive GDP-bound state. The complex formed with AMOT acts by regulating the uptake of polarity proteins at tight junctions, possibly by deciding whether tight junction transmembrane proteins are recycled back to the plasma membrane or sent elsewhere. Participates in the Ca(2+)-dependent regulation of exocytosis, possibly by catalyzing GTPase activity of Rho family proteins and by inducing the reorganization of the cortical actin filaments. Acts as a GTPase activator in vitro for RAC1.,
Subcellular Location :	Membrane; Peripheral membrane protein. Cytoplasm. Cell junction, tight junction. Associates with membranes and concentrates at sites of cell-cell contact.
Expression :	Ubiquitously expressed. Expressed at higher level in heart and placenta.

Products Images



Western blot analysis of lysates from LOVO cells, using RHG17 Antibody. The lane on the right is blocked with the synthesized peptide.