

ABHD8 Polyclonal Antibody

| | |
|------------------------------|---|
| Catalog No : | YT0063 |
| Reactivity : | Human;Mouse |
| Applications : | WB;IHC;IF;ELISA |
| Target : | ABHD8 |
| Gene Name : | ABHD8 |
| Protein Name : | Abhydrolase domain-containing protein 8 |
| Human Gene Id : | 79575 |
| Human Swiss Prot No : | Q96I13 |
| Mouse Gene Id : | 64296 |
| Mouse Swiss Prot No : | Q8R0P8 |
| Immunogen : | The antiserum was produced against synthesized peptide derived from human ABHD8. AA range:291-340 |
| Specificity : | ABHD8 Polyclonal Antibody detects endogenous levels of ABHD8 protein. |
| Formulation : | Liquid in PBS containing 50% glycerol, 0.5% BSA and 0.02% sodium azide. |
| Source : | Polyclonal, Rabbit,IgG |
| Dilution : | WB 1:500 - 1:2000. IHC 1:100 - 1:300. ELISA: 1:40000.. IF 1:50-200 |
| Purification : | The antibody was affinity-purified from rabbit antiserum by affinity-chromatography using epitope-specific immunogen. |
| Concentration : | 1 mg/ml |
| Storage Stability : | -15°C to -25°C/1 year(Do not lower than -25°C) |

Observed Band : 45kD

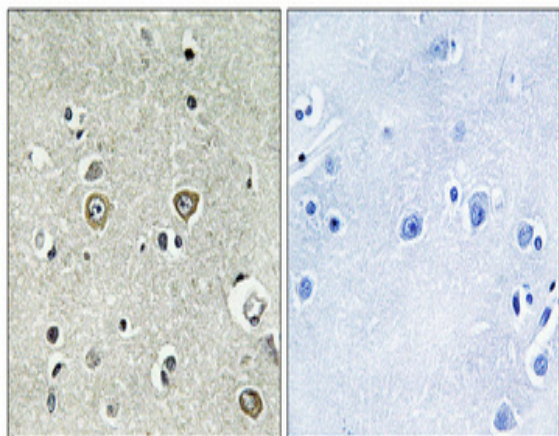
Background : This gene is upstream of, and in a head-to-head orientation with the gene for the mitochondrial ribosomal protein L34. The predicted protein contains alpha/beta hydrolase fold and secretory lipase domains. [provided by RefSeq, Jul 2008],

Function : similarity:Belongs to the AB hydrolase superfamily.,

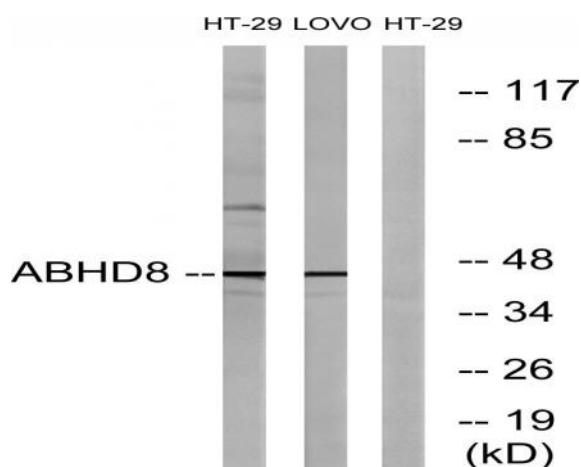
Subcellular Location : extracellular exosome,

Expression : Brain,Embryo,Lymph,Muscle,

Products Images



Immunohistochemical analysis of paraffin-embedded Human brain. Antibody was diluted at 1:100(4° overnight). High-pressure and temperature Tris-EDTA,pH8.0 was used for antigen retrieval. Negative contrl (right) obtained from antibody was pre-absorbed by immunogen peptide.



Western blot analysis of lysates from HT-29 and LOVO cells, using ABHD8 Antibody. The lane on the right is blocked with the synthesized peptide.