

Ameloblastin Polyclonal Antibody

Catalog No :	YT0209
Reactivity :	Human;Rat;Mouse;
Applications :	WB;ELISA
Target :	Ameloblastin
Gene Name :	AMBN
Protein Name :	Ameloblastin
Human Gene Id :	258
Human Swiss Prot No :	Q9NP70
Mouse Swiss Prot No :	O55189
Immunogen :	The antiserum was produced against synthesized peptide derived from human Ameloblastin. AA range:275-324
Specificity :	Ameloblastin Polyclonal Antibody detects endogenous levels of Ameloblastin protein.
Formulation :	Liquid in PBS containing 50% glycerol, 0.5% BSA and 0.02% sodium azide.
Source :	Polyclonal, Rabbit,IgG
Dilution :	WB 1:500 - 1:2000. ELISA: 1:10000. Not yet tested in other applications.
Purification :	The antibody was affinity-purified from rabbit antiserum by affinity-chromatography using epitope-specific immunogen.
Concentration :	1 mg/ml
Storage Stability :	-15°C to -25°C/1 year(Do not lower than -25°C)
Observed Band :	48kD

Background :

This gene encodes the nonamelogenin enamel matrix protein ameloblastin. The encoded protein may be important in enamel matrix formation and mineralization. This gene is located in the calcium-binding phosphoprotein gene cluster on chromosome 4. Mutations in this gene may be associated with dentinogenesis imperfect and autosomal dominant amyogenesis imperfect. [provided by RefSeq, Aug 2011],

Function :

disease:Defects in AMBN are found in patients with ameloblastomas.,function:Involved in the mineralization and structural organization of enamel.,similarity:Belongs to the ameloblastin family.,tissue specificity:Ameloblast-specific. Located at the Tomes processes of secretory ameloblasts and in the sheath space between rod-interrod enamel.,

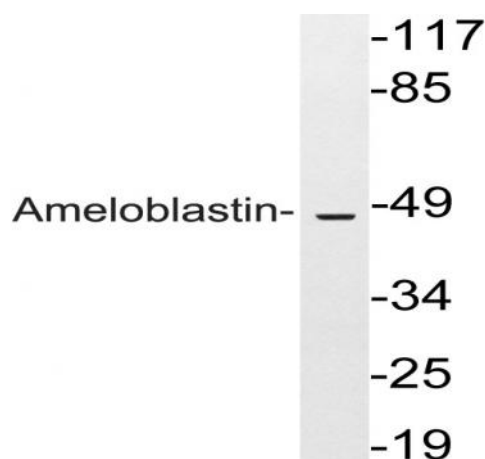
Subcellular Location :

Secreted, extracellular space, extracellular matrix.

Expression :

Ameloblast-specific. Located at the Tomes processes of secretory ameloblasts and in the sheath space between rod-interrod enamel.

Products Images



Western blot analysis of lysates from HeLa cells, using Ameloblastin antibody.