

Collagen Type III (ABT-CIII) mouse mAb

Catalog No :	YM4926
Reactivity :	Human;
Applications :	IHC;WB;IF;ELISA
Target :	Collagen III
Fields :	>>Platelet activation;>>Relaxin signaling pathway;>>AGE-RAGE signaling pathway in diabetic complications;>>Protein digestion and absorption;>>Amoebiasis;>>Diabetic cardiomyopathy
Gene Name :	COL3A1
Protein Name :	Collagen alpha-1(III) chain
Human Gene Id :	1281
Human Swiss Prot No :	P02461
Immunogen :	Synthesized peptide derived from human Collagen Type III AA range: 100-200
Specificity :	This antibody detects endogenous levels of COL3A1 protein.
Formulation :	PBS, 50% glycerol, 0.05% Proclin 300, 0.05%BSA
Source :	Mouse, Monoclonal/IgG2a, kappa
Dilution :	IHC 1:200-1000. WB 1:500-2000. IF 1:100-500. ELISA 1:1000-5000
Purification :	Protein G
Storage Stability :	-15°C to -25°C/1 year(Do not lower than -25°C)
Molecularweight :	150kD
Observed Band :	200kD

Cell Pathway : Focal adhesion;ECM-receptor interaction;

Background : collagen type III alpha 1 chain(COL3A1) Homo sapiens This gene encodes the pro-alpha1 chains of type III collagen, a fibrillar collagen that is found in extensible connective tissues such as skin, lung, uterus, intestine and the vascular system, frequently in association with type I collagen. Mutations in this gene are associated with Ehlers-Danlos syndrome types IV, and with aortic and arterial aneurysms. Two transcripts, resulting from the use of alternate polyadenylation signals, have been identified for this gene. [provided by R. Dalgleish, Feb 2008],

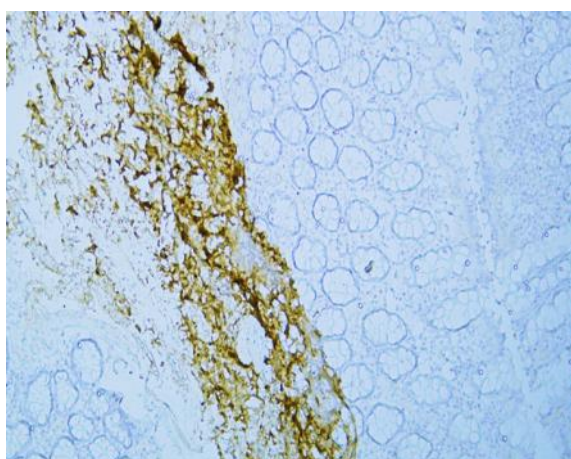
Function : disease:Defects in COL3A1 are a cause of Ehlers-Danlos syndrome type 3 (EDS3) [MIM:130020]; also known as benign hypermobility syndrome. EDS is a connective tissue disorder characterized by hyperextensible skin, atrophic cutaneous scars due to tissue fragility and joint hyperlaxity. EDS3 is a form of Ehlers-Danlos syndrome characterized by marked joint hyperextensibility without skeletal deformity.,disease:Defects in COL3A1 are a cause of susceptibility to aortic aneurysm abdominal (AAA) [MIM:100070]. AAA is a common multifactorial disorder characterized by permanent dilation of the abdominal aorta, usually due to degenerative changes in the aortic wall. Histologically, AAA is characterized by signs of chronic inflammation, destructive remodeling of the extracellular matrix, and depletion of vascular smooth muscle cells.,disease:Defects in COL3A1 are the cause of Ehlers-Danlos syndrome t

Subcellular Cytoplasmic

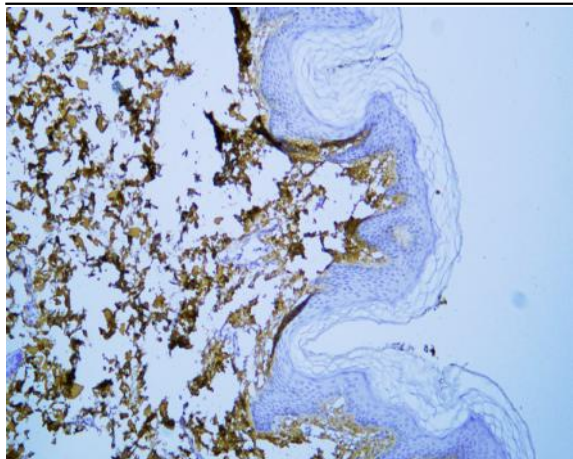
Location :

Expression : Colon carcinoma,Liver,Placenta,Skin fibroblast,

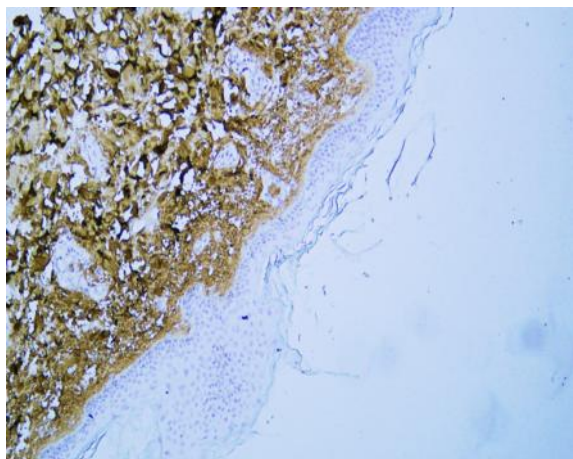
Products Images



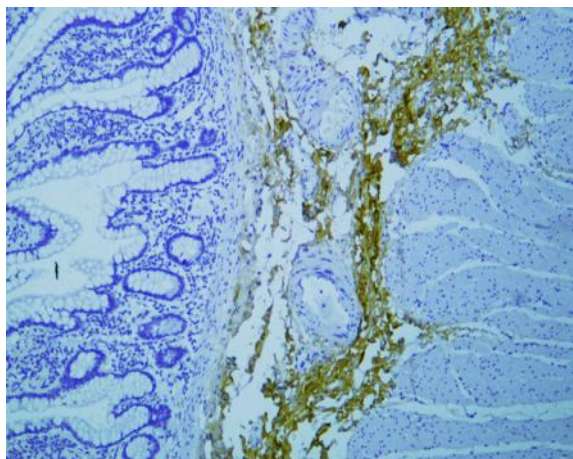
Human colon tissue was stained with Anti-Collagen Type III (ABT-CIII) Antibody



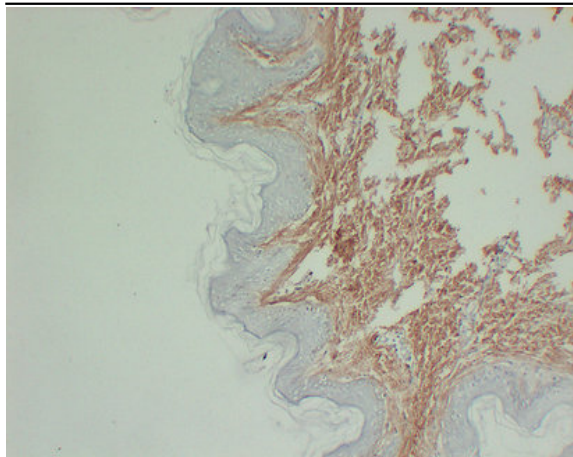
Human skin tissue was stained with Anti-Collagen Type III (ABT-CIII) Antibody



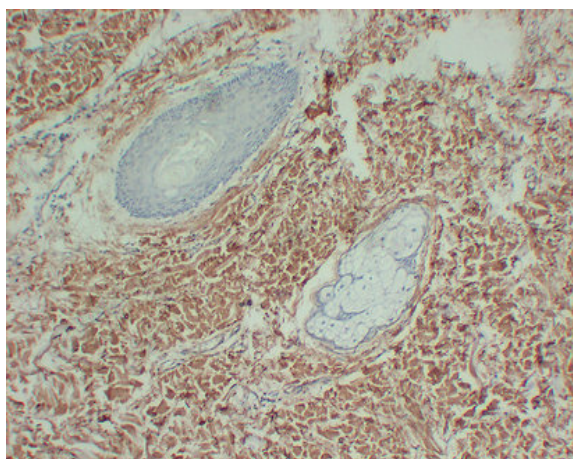
Human skin tissue was stained with Anti-Collagen Type III (ABT-CIII) Antibody



Human small intestine tissue was stained with Anti-Collagen Type III (ABT-CIII) Antibody



Immunohistochemical analysis of paraffin-embedded Skin. 1, Antibody was diluted at 1:200(4° overnight). 2, Citric acid ,pH6.0 was used for antigen retrieval. 3,Secondary antibody was diluted at 1:200(room temperature, 30min).



Immunohistochemical analysis of paraffin-embedded Skin. 1, Antibody was diluted at 1:200(4° overnight). 2, Citric acid ,pH6.0 was used for antigen retrieval. 3,Secondary antibody was diluted at 1:200(room temperature, 30min).