

**ADCK4 Polyclonal Antibody**

<b>Catalog No :</b>	YT0122
<b>Reactivity :</b>	Human;Mouse;Rat
<b>Applications :</b>	WB;IHC;IF;ELISA
<b>Target :</b>	ADCK4
<b>Gene Name :</b>	ADCK4
<b>Protein Name :</b>	Uncharacterized aarF domain-containing protein kinase 4
<b>Human Gene Id :</b>	79934
<b>Human Swiss Prot No :</b>	Q96D53
<b>Mouse Swiss Prot No :</b>	Q566J8
<b>Rat Gene Id :</b>	308453
<b>Rat Swiss Prot No :</b>	Q6AY19
<b>Immunogen :</b>	The antiserum was produced against synthesized peptide derived from human ADCK4. AA range:31-80
<b>Specificity :</b>	ADCK4 Polyclonal Antibody detects endogenous levels of ADCK4 protein.
<b>Formulation :</b>	Liquid in PBS containing 50% glycerol, 0.5% BSA and 0.02% sodium azide.
<b>Source :</b>	Polyclonal, Rabbit,IgG
<b>Dilution :</b>	WB 1:500 - 1:2000. IHC 1:100 - 1:300. IF 1:200 - 1:1000. ELISA: 1:10000. Not yet tested in other applications.
<b>Purification :</b>	The antibody was affinity-purified from rabbit antiserum by affinity-chromatography using epitope-specific immunogen.
<b>Concentration :</b>	1 mg/ml

**Storage Stability :** -15°C to -25°C/1 year (Do not lower than -25°C)

**Observed Band :** 65kD

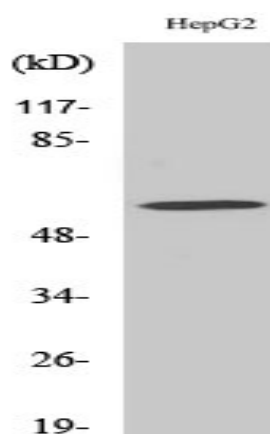
**Background :** This gene encodes a protein with two copies of a domain found in protein kinases. The encoded protein has a complete protein kinase catalytic domain, and a truncated domain that contains only the active and binding sites of the protein kinase domain, however, it is not known whether the protein has any kinase activity. Multiple transcript variants encoding different isoforms have been found for this gene. [provided by RefSeq, Sep 2011],

**Function :** function: The function of this protein is not yet clear. It is not known if it has protein kinase activity and what type of substrate it would phosphorylate (Ser, Thr or Tyr)., similarity: Belongs to the protein kinase superfamily. ADCK protein kinase family., similarity: Contains 1 protein kinase domain.,

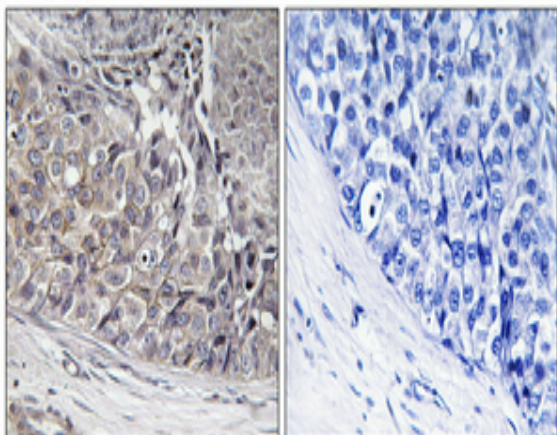
**Subcellular Location :** Mitochondrion membrane ; Single-pass membrane protein . Cytoplasm, cytosol . Cell membrane .

**Expression :** Widely expressed, including renal podocytes.

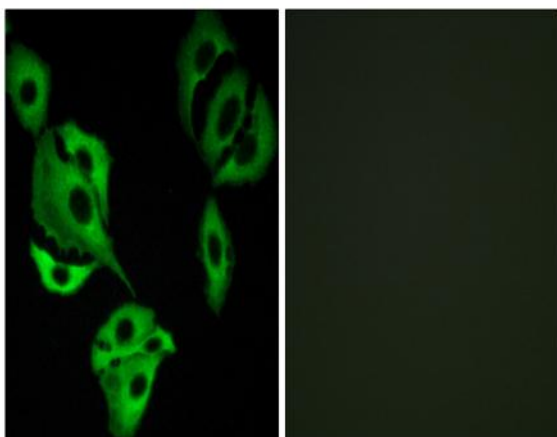
## Products Images



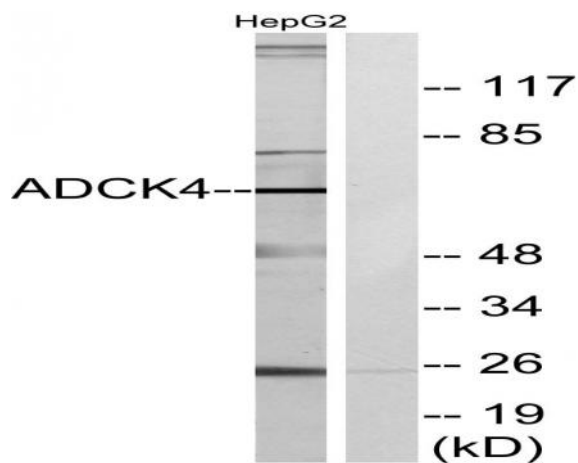
Western Blot analysis of various cells using ADCK4 Polyclonal Antibody



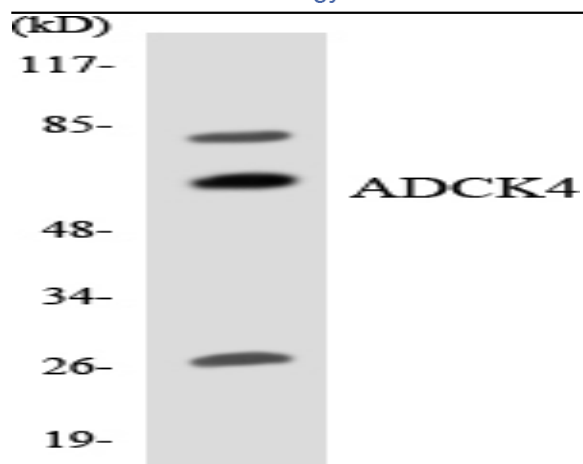
Immunohistochemical analysis of paraffin-embedded Human breast cancer. Antibody was diluted at 1:100 (4° overnight). High-pressure and temperature Tris-EDTA, pH 8.0 was used for antigen retrieval. Negative control (right) obtained from antibody was pre-absorbed by immunogen peptide.



Immunofluorescence analysis of A549 cells, using ADCK4 Antibody. The picture on the right is blocked with the synthesized peptide.



Western blot analysis of lysates from HepG2 cells, using ADCK4 Antibody. The lane on the right is blocked with the synthesized peptide.



Western blot analysis of the lysates from HeLa cells using ADCK4 antibody.