

AAK1 Polyclonal Antibody

Catalog No :	YT0038
Reactivity :	Human;Mouse;Rat;Monkey
Applications :	WB;IHC;IF;ELISA
Target :	AAK1
Gene Name :	AAK1
Protein Name :	AP2-associated protein kinase 1
Human Gene Id :	22848
Human Swiss Prot No :	Q2M2I8
Mouse Gene Id :	269774
Mouse Swiss Prot No :	Q3UJH0
Rat Swiss Prot No :	P0C1X8
Immunogen :	The antiserum was produced against synthesized peptide derived from human AAK1. AA range:271-320
Specificity :	AAK1 Polyclonal Antibody detects endogenous levels of AAK1 protein.
Formulation :	Liquid in PBS containing 50% glycerol, 0.5% BSA and 0.02% sodium azide.
Source :	Polyclonal, Rabbit,IgG
Dilution :	WB 1:500 - 1:2000. IHC 1:100 - 1:300. IF 1:200 - 1:1000. ELISA: 1:20000. Not yet tested in other applications.
Purification :	The antibody was affinity-purified from rabbit antiserum by affinity-chromatography using epitope-specific immunogen.
Concentration :	1 mg/ml

Storage Stability : -15°C to -25°C/1 year (Do not lower than -25°C)

Observed Band : 94kD

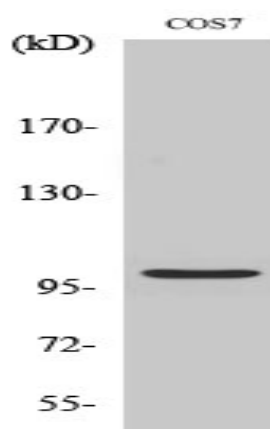
Background : Adaptor-related protein complex 2 (AP-2 complexes) functions during receptor-mediated endocytosis to trigger clathrin assembly, interact with membrane-bound receptors, and recruit endocytic accessory factors. This gene encodes a member of the SNF1 subfamily of Ser/Thr protein kinases. The protein interacts with and phosphorylates a subunit of the AP-2 complex, which promotes binding of AP-2 to sorting signals found in membrane-bound receptors and subsequent receptor endocytosis. Its kinase activity is stimulated by clathrin. Alternatively spliced transcript variants have been described, but their biological validity has not been determined. [provided by RefSeq, Jul 2008],

Function : catalytic activity:ATP + a protein = ADP + a phosphoprotein.,enzyme regulation:Stimulated by clathrin.,function:Phosphorylates the AP2M1/mu2 subunit of the adaptor protein complex 2 (AP-2). May play a role in regulating aspects of clathrin-mediated endocytosis.,PTM:Autophosphorylated.,similarity:Belongs to the protein kinase superfamily. Ser/Thr protein kinase family.,similarity:Contains 1 protein kinase domain.,subcellular location:Active when found in clathrin-coated pits at the plasma membrane.,subunit:Interacts with alpha-adaptin and AP-2.,

Subcellular Location : Cell membrane ; Peripheral membrane protein . Membrane, clathrin-coated pit . Cell junction, synapse, presynapse . Active when found in clathrin-coated pits at the plasma membrane. In neuronal cells, enriched at presynaptic terminals. In non-neuronal cells, enriched at leading edge of migrating cells. .

Expression : Detected in brain, heart and liver. Isoform 1 is the predominant isoform in brain.

Products Images



Western Blot analysis of various cells using AAK1 Polyclonal Antibody

