

## MAGE-C1 (ABT339) mouse mAb (Ready to Use)

<b>Catalog No :</b>	YM6887R
<b>Reactivity :</b>	Human;
<b>Applications :</b>	IHC
<b>Target :</b>	MAGE-C1
<b>Gene Name :</b>	MAGEC1
<b>Protein Name :</b>	MAGE-C1
<b>Human Gene Id :</b>	9947
<b>Human Swiss Prot No :</b>	O60732
<b>Immunogen :</b>	Synthesized peptide derived from human MAGE-C1 AA range: 700-800
<b>Specificity :</b>	The antibody can specifically recognize human MAGE-C1 protein.
<b>Formulation :</b>	The prediluted ready-to-use antibody is diluted in phosphate buffer saline containing stabilizing protein and 0.05% Proclin 300
<b>Source :</b>	Mouse, Monoclonal/IgG1, kappa
<b>Dilution :</b>	Ready to use for IHC
<b>Purification :</b>	The antibody was affinity-purified from ascites by affinity-chromatography using specific immunogen.
<b>Storage Stability :</b>	2°C to 8°C/1 year
<b>Background :</b>	This gene is a member of the melanoma antigen gene (MAGE) family. The proteins of this family are tumor-specific antigens that can be recognized by autologous cytolytic T lymphocytes. This protein contains a large number of unique short repetitive sequences in front of the MAGE-homologous sequence, and therefore is about 800 aa longer than the other MAGE proteins. [provided by RefSeq, Jul 2008],

**Function :** similarity:Contains 1 MAGE domain.,tissue specificity:Expressed in testis and in tumors of a wide variety of histologic types.,

---

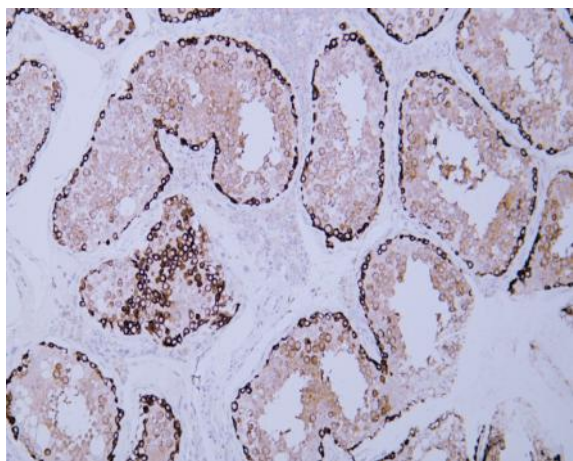
**Subcellular Location :** Cytoplasmic

---

**Expression :** Expressed in testis and in tumors of a wide variety of histologic types.

---

## Products Images



Human testis tissue was stained with Anti-MAGE-C1 (ABT339) Antibody