

## S100A6 (ABT-S100A6) mouse mAb (Ready to Use)

<b>Catalog No :</b>	YM6668R
<b>Reactivity :</b>	Human;
<b>Applications :</b>	IHC
<b>Target :</b>	S100A6
<b>Gene Name :</b>	S100A6 CACY
<b>Protein Name :</b>	S100A6
<b>Human Gene Id :</b>	6277
<b>Human Swiss Prot No :</b>	P06703
<b>Immunogen :</b>	Synthesized peptide derived from human S100A6 AA range: 50-90
<b>Specificity :</b>	The antibody can specifically recognize human S100A6 protein.
<b>Formulation :</b>	The prediluted ready-to-use antibody is diluted in phosphate buffer saline containing stabilizing protein and 0.05% Proclin 300
<b>Source :</b>	Mouse, Monoclonal/IgG1, kappa
<b>Dilution :</b>	Ready to use for IHC
<b>Purification :</b>	The antibody was affinity-purified from ascites by affinity-chromatography using specific immunogen.
<b>Storage Stability :</b>	2°C to 8°C/1 year
<b>Background :</b>	S100 calcium binding protein A6(S100A6) Homo sapiens The protein encoded by this gene is a member of the S100 family of proteins containing 2 EF-hand calcium-binding motifs. S100 proteins are localized in the cytoplasm and/or nucleus of a wide range of cells, and involved in the regulation of a number of cellular processes such as cell cycle progression and differentiation. S100 genes include at least 13 members which are located as a cluster on chromosome 1q21. This protein may function in stimulation of Ca <sup>2+</sup> -dependent insulin release,

stimulation of prolactin secretion, and exocytosis. Chromosomal rearrangements and altered expression of this gene have been implicated in melanoma. [provided by RefSeq, Jul 2008],

### Function :

induction:Preferentially expressed when quiescent fibroblasts are stimulated to proliferate. It is inducible by growth factors and overexpressed in acute myeloid leukemias.,miscellaneous:This protein co-purified with the prolactin receptor.,PTM:The N-terminus is blocked.,similarity:Belongs to the S-100 family.,similarity:Contains 2 EF-hand domains.,subunit:Homodimer, antiparallel. Interacts with SUGT1.,

### Subcellular

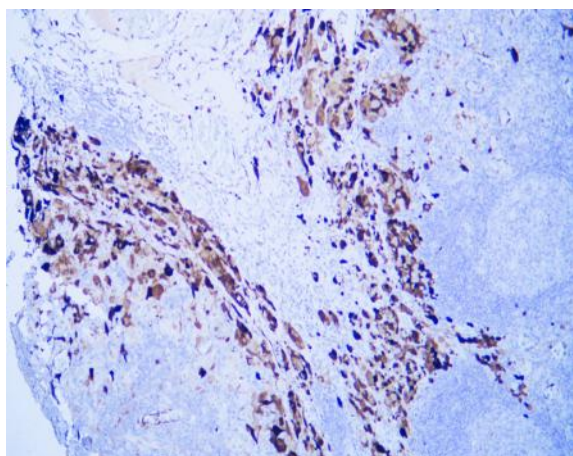
Nuclear, Cytoplasmic

### Location :

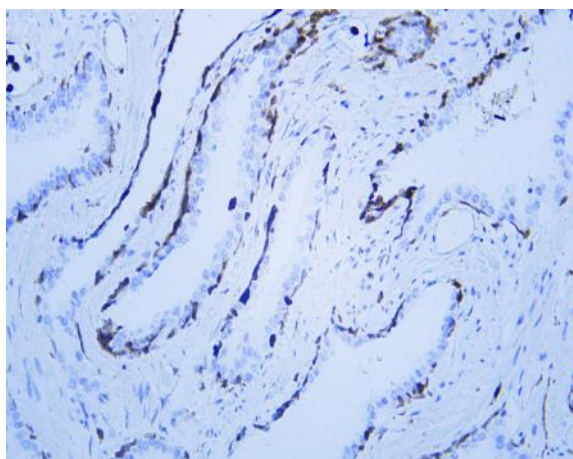
### Expression :

Brain,Fibroblast,Placenta,Platelet,

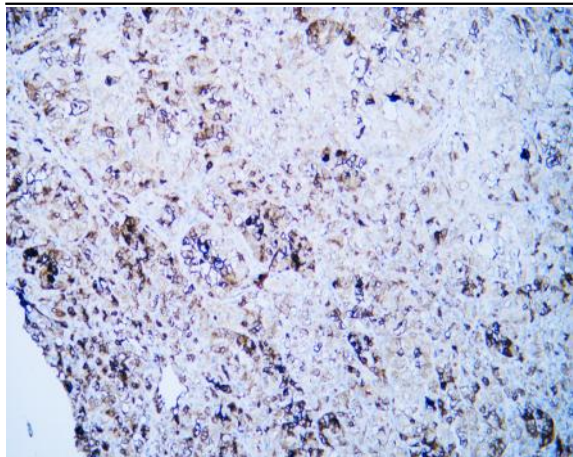
## Products Images



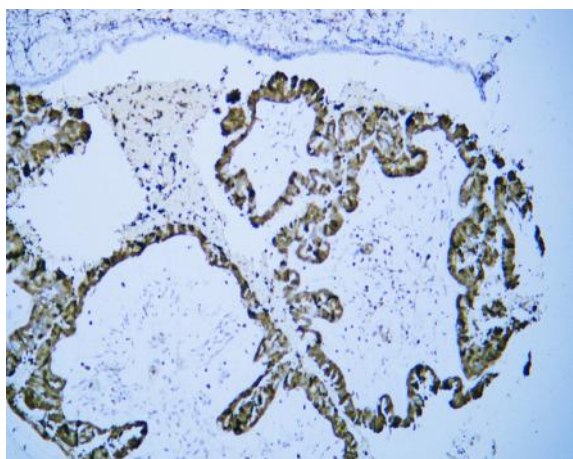
Human malignant melanoma tissue was stained with Anti-S100A6 (ABT-S100A6) Antibody



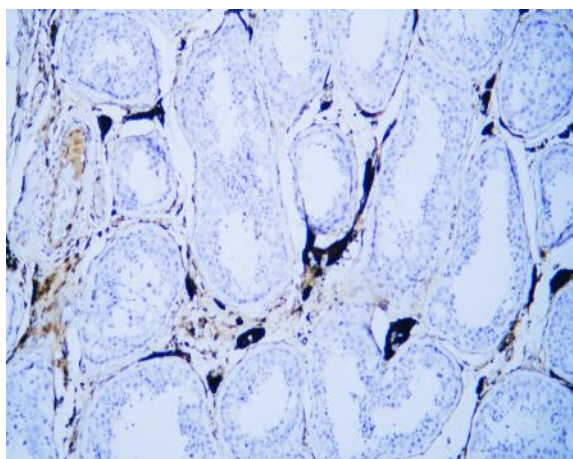
Human prostate tissue was stained with Anti-S100A6 (ABT-S100A6) Antibody



Human renal clear cell carcinoma tissue was stained with Anti-S100A6 (ABT-S100A6) Antibody



Human serous papillary adenocarcinoma of ovary tissue was stained with Anti-S100A6 (ABT-S100A6) Antibody



Human testis tissue was stained with Anti-S100A6 (ABT-S100A6) Antibody