

CD34 (ABT-CD34) mouse mAb

Catalog No :	YM6152
Reactivity :	Human
Applications :	IHC;IF;ELISA
Target :	CD34
Fields :	>>Cell adhesion molecules;>>Hematopoietic cell lineage
Gene Name :	CD34
Protein Name :	Hematopoietic progenitor cell antigen CD34 (CD antigen CD34)
Human Gene Id :	947
Human Swiss Prot No :	P28906
Immunogen :	Synthesized peptide derived from human CD34 AA range: 150-250
Specificity :	This antibody detects endogenous levels of human CD34. Heat-induced epitope retrieval (HIER) TRIS-EDTA of pH8.0 was highly recommended as antigen repair method in paraffin section
Formulation :	Liquid in PBS containing 50% glycerol, 0.5% BSA and 0.02% sodium azide.
Source :	Mouse, Monoclonal/IgG1, Kappa
Dilution :	IHC 1:200-400. IF 1:50-200, ELISA 1:5000-20000
Purification :	The antibody was affinity-purified from mouse ascites by affinity-chromatography using specific immunogen.
Storage Stability :	-15°C to -25°C/1 year(Do not lower than -25°C)
Background :	The protein encoded by this gene may play a role in the attachment of stem cells to the bone marrow extracellular matrix or to stromal cells. This single-pass membrane protein is highly glycosylated and phosphorylated by protein kinase C.

Two transcript variants encoding different isoforms have been found for this gene.
[provided by RefSeq, Aug 2011],

Function :

alternative products:Both isoforms are expressed on the cell surface.
CD34-T/CD34-F ratio increases with cell differentiation,developmental stage:On early hematopoietic progenitor cells.,disease:Abnormal CD34 expression in leukemogenesis.,function:Possible adhesion molecule with a role in early hematopoiesis by mediating the attachment of stem cells to the bone marrow extracellular matrix or directly to stromal cells. Could act as a scaffold for the attachment of lineage specific glycans, allowing stem cells to bind to lectins expressed by stromal cells or other marrow components. Presents carbohydrate ligands to selectins.,online information:CD34 entry,PTM:Highly glycosylated.,PTM:Phosphorylated on serine residues by PKC.,similarity:Belongs to the CD34 family.,tissue specificity:Selectively expressed on hematopoietic progenitor cells and the small vessel endothelium of a variety of tiss

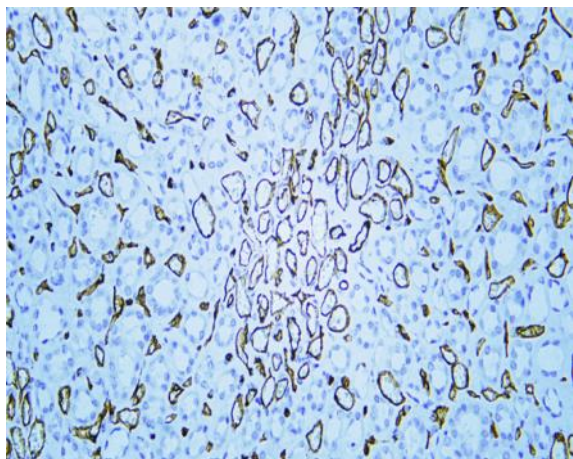
Subcellular Location :

Membrane; Single-pass type I membrane protein.

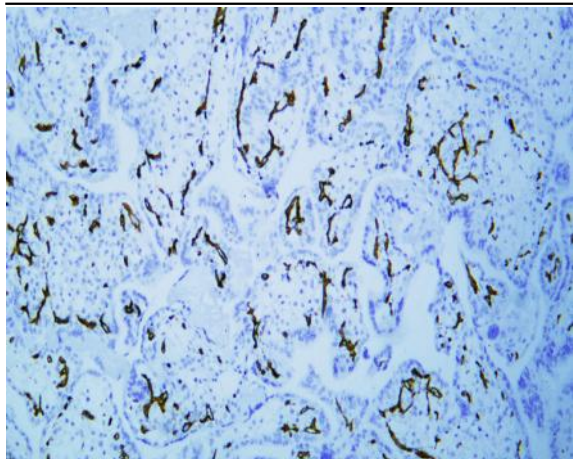
Expression :

Selectively expressed on hematopoietic progenitor cells and the small vessel endothelium of a variety of tissues.

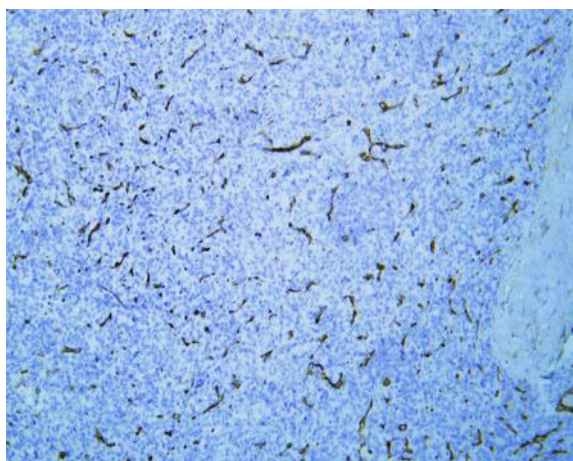
Products Images



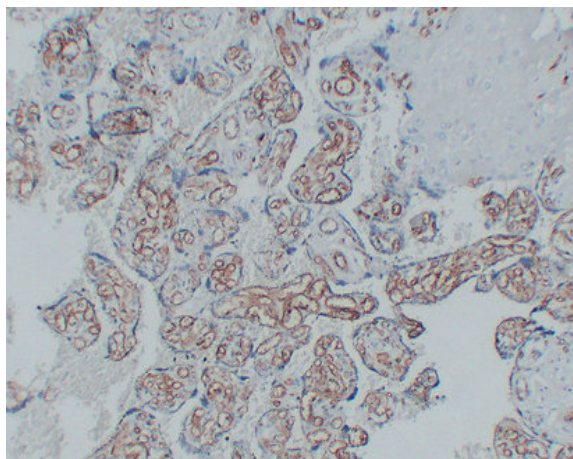
Human kidney tissue was stained with Anti-CD34 (ABT-CD34) Antibody



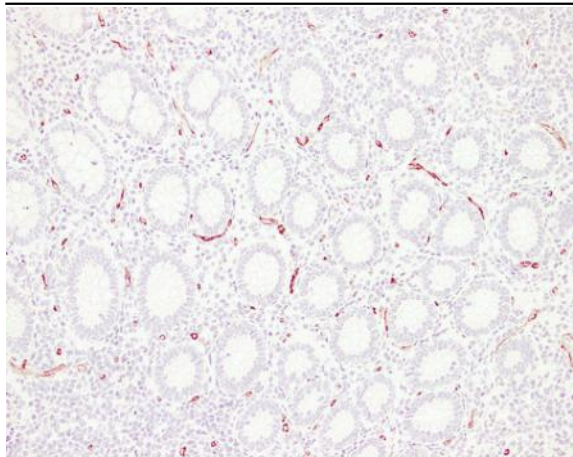
Human placenta tissue was stained with Anti-CD34 (ABT-CD34) Antibody



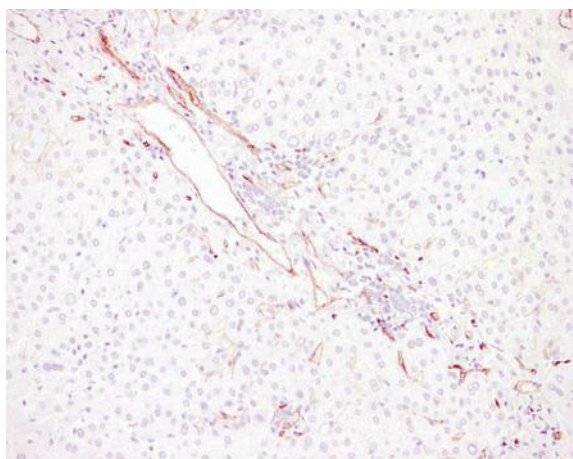
Human spleen tissue was stained with Anti-CD34 (ABT-CD34) Antibody



Immunohistochemical analysis of paraffin-embedded Placenta. 1, Antibody was diluted at 1:200(4° overnight). 2, Tris-EDTA,pH8.0 was used for antigen retrieval. 3,Secondary antibody was diluted at 1:200(room temperature, 30min).



Immunohistochemical analysis of paraffin-embedded Appendix. 1, Antibody was diluted at 1:200(4° overnight). 2, Tris-EDTA,pH8.0 was used for antigen retrieval. 3,Secondary antibody was diluted at 1:200(room temperature, 30min).



Immunohistochemical analysis of paraffin-embedded Liver. 1, Antibody was diluted at 1:200(4° overnight). 2, Tris-EDTA,pH8.0 was used for antigen retrieval. 3,Secondary antibody was diluted at 1:200(room temperature, 30min).