

BEST2 Polyclonal Antibody

Catalog No :	YN5663
Reactivity :	Mouse;Rat
Applications :	WB;IHC;IF
Target :	BEST2
Fields :	>>Salivary secretion
Gene Name :	BEST2
Protein Name :	Bestrophin-2
Human Gene Id :	54831
Human Swiss Prot No :	Q8NFI1
Mouse Swiss Prot No :	Q8BGM5
Immunogen :	Synthetic Peptide of BEST2
Specificity :	The antibody detects endogenous BEST2 protein.
Formulation :	PBS, pH 7.4, containing 0.5%BSA, 0.02% sodium azide as Preservative and 50% Glycerol.
Source :	Polyclonal, Rabbit,IgG
Dilution :	WB 1:500-1000 IHC 1:200-500. IF 1:50-200
Purification :	The antibody was affinity-purified from rabbit antiserum by affinity-chromatography using epitope-specific immunogen.
Storage Stability :	-15°C to -25°C/1 year(Do not lower than -25°C)
Observed Band :	50kD

Background :

This gene is a member of the bestrophin gene family of anion channels. Bestrophin genes share a similar gene structure with highly conserved exon-intron boundaries, but with distinct 3' ends. Bestrophins are transmembrane proteins that contain a homologous region rich in aromatic residues, including an invariant arg-phe-pro motif. Mutation in one of the family members (bestrophin 1) is associated with vitelliform macular dystrophy. The bestrophin 2 gene is mainly expressed in the retinal pigment epithelium and colon. [provided by RefSeq, Jul 2008],

Function :

function:Forms calcium-sensitive chloride channels. May conduct other physiologically significant anions such as bicarbonate.,similarity:Belongs to the bestrophin family.,tissue specificity:Mainly confined to the retinal pigment epithelium and colon.,

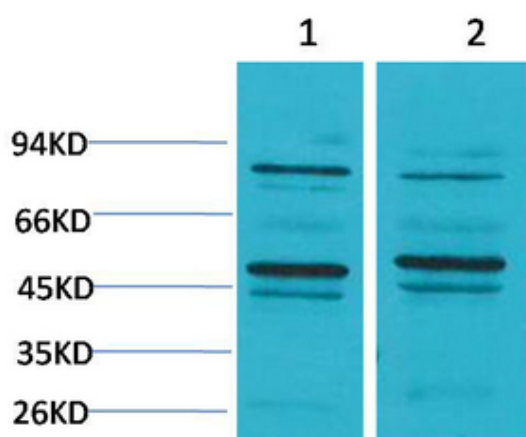
Subcellular Location :

Cell membrane; Multi-pass membrane protein.

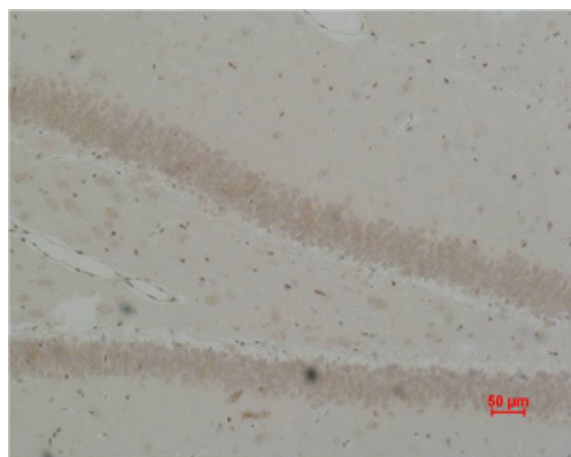
Expression :

Mainly confined to the retinal pigment epithelium and colon.

Products Images



Western blot analysis of 1) Mouse Brain Tissue, 2) Rat Brain Tissue using BEST2 Polyclonal Antibody. Secondary antibody(catalog#:RS0002) was diluted at 1:20000



Immunohistochemical analysis of paraffin-embedded Rat Brain Tissue using BEST2 Polyclonal Antibody.