

## Claudin 2 (PT0311) Mouse mAb

<b>Catalog No :</b>	YM4159
<b>Reactivity :</b>	Human
<b>Applications :</b>	WB;IHC;ELISA
<b>Target :</b>	Claudin-2
<b>Fields :</b>	>>Cell adhesion molecules;>>Tight junction;>>Leukocyte transendothelial migration;>>Pathogenic Escherichia coli infection;>>Hepatitis C
<b>Gene Name :</b>	CLDN2 PSEC0059 SP82 UNQ705/PRO1356
<b>Protein Name :</b>	Claudin 2
<b>Human Gene Id :</b>	9075
<b>Human Swiss Prot No :</b>	P57739
<b>Immunogen :</b>	Synthesized peptide derived from human Claudin 2 AA range: 150-250
<b>Specificity :</b>	This antibody detects endogenous levels of human Claudin 2
<b>Formulation :</b>	Liquid in PBS containing 50% glycerol, 0.5% BSA and 0.02% sodium azide.
<b>Source :</b>	Mouse, Monoclonal/IgG2b, Kappa
<b>Dilution :</b>	IHC 1:100-300, WB 1:500-2000, ELISA 1:5000-20000
<b>Purification :</b>	The antibody was affinity-purified from mouse ascites by affinity-chromatography using specific immunogen.
<b>Storage Stability :</b>	-15°C to -25°C/1 year(Do not lower than -25°C)
<b>Molecularweight :</b>	25kD
<b>Background :</b>	This gene product belongs to the claudin protein family whose members have been identified as major integral membrane proteins localized exclusively at tight

junctions. Claudins are expressed in an organ-specific manner and regulate tissue-specific physiologic properties of tight junctions. This protein is expressed in the intestine. Alternatively spliced transcript variants with different 5' untranslated region have been found for this gene.[provided by RefSeq, Jan 2010],

### Function :

function:Plays a major role in tight junction-specific obliteration of the intercellular space, through calcium-independent cell-adhesion activity.,similarity:Belongs to the claudin family.,subunit:Can form homo- and heteropolymers with other CLDN. Homopolymers interact with CLDN3, but not CLDN1, homopolymers. Directly interacts with TJP1/ZO-1, TJP2/ZO-2 and TJP3/ZO-3.,

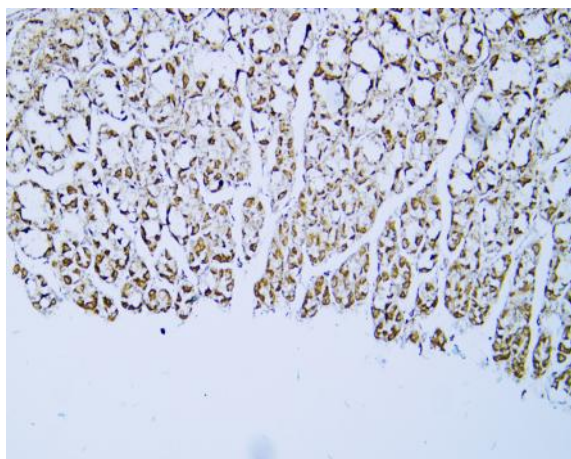
### Subcellular Location :

Cell junction, tight junction . Cell membrane ; Multi-pass membrane protein .

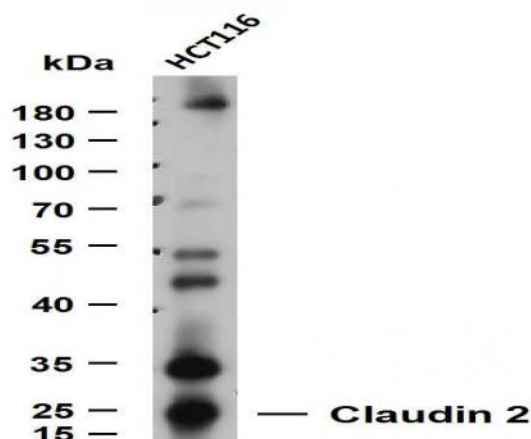
### Expression :

Colon,Colon epithelium,Kidney,Skin,Teratocarcinoma,Thalamus,

## Products Images



Human stomach tissue was stained with Anti-Claudin 2 (PT0311) Antibody



Whole cell lysates were separated by 10% SDS-PAGE, and the membrane was blotted with anti-Claudin 2 (PT0311) antibody. The HRP-conjugated Goat anti-Mouse IgG(H + L) antibody was used to detect the antibody. Lane 1: HCT116 Predicted band size: 29kDa Observed band size: 50kDa