

## VPS18 rabbit pAb

<b>Catalog No :</b>	YN3806
<b>Reactivity :</b>	Human;Mouse
<b>Applications :</b>	WB
<b>Target :</b>	VPS18
<b>Fields :</b>	>>Salmonella infection
<b>Gene Name :</b>	VPS18 KIAA1475
<b>Protein Name :</b>	VPS18
<b>Human Gene Id :</b>	57617
<b>Human Swiss Prot No :</b>	Q9P253
<b>Mouse Gene Id :</b>	228545
<b>Mouse Swiss Prot No :</b>	Q8R307
<b>Immunogen :</b>	Synthesized peptide derived from human VPS18 AA range: 778-828
<b>Specificity :</b>	This antibody detects endogenous levels of VPS18 at Human/Mouse
<b>Formulation :</b>	Liquid in PBS containing 50% glycerol, 0.5% BSA and 0.02% sodium azide.
<b>Source :</b>	Polyclonal, Rabbit,IgG
<b>Dilution :</b>	WB 1:500-2000
<b>Purification :</b>	The antibody was affinity-purified from rabbit antiserum by affinity-chromatography using epitope-specific immunogen.
<b>Concentration :</b>	1 mg/ml

**Storage Stability :** -15°C to -25°C/1 year (Do not lower than -25°C)

**Molecularweight :** 107kD

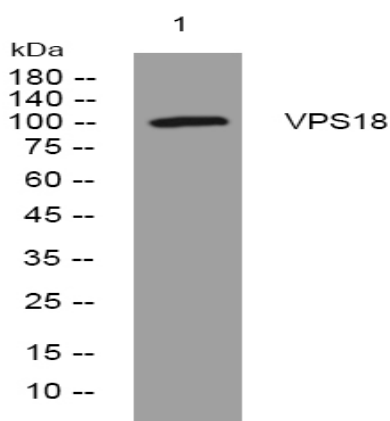
**Background :** Vesicle mediated protein sorting plays an important role in segregation of intracellular molecules into distinct organelles. Genetic studies in yeast have identified more than 40 vacuolar protein sorting (VPS) genes involved in vesicle transport to vacuoles. This gene encodes the human homolog of yeast class C Vps18 protein. The mammalian class C Vps proteins are predominantly associated with late endosomes/lysosomes, and like their yeast counterparts, may mediate vesicle trafficking steps in the endosome/lysosome pathway. [provided by RefSeq, Jul 2008],

**Function :** function:May play a role in vesicle-mediated protein trafficking to lysosomal compartments and in membrane docking/fusion reactions of late endosomes/lysosomes.,similarity:Belongs to the VPS18 family.,similarity:Contains 1 clathrin repeat.,similarity:Contains 1 RING-type zinc finger.,subcellular location:Cytoplasmic, peripheral membrane protein associated with late endosomes/lysosomes.,subunit:Interacts with HOOK1 (By similarity). Large hetero-oligomeric complex together with VPS11, VPS16 and VPS33A. Interacts with STX7.,tissue specificity:Ubiquitous. Expression was highest in heart and low in lung.,

**Subcellular Location :** Late endosome membrane ; Peripheral membrane protein ; Cytoplasmic side . Lysosome membrane ; Peripheral membrane protein ; Cytoplasmic side . Early endosome . Cytoplasmic vesicle, autophagosome . Cytoplasmic vesicle, clathrin-coated vesicle . Cytoplasmic, peripheral membrane protein associated with early endosomes and late endosomes/lysosomes.

**Expression :** Ubiquitous. Expression was highest in heart and low in lung.

## Products Images



Western blot analysis of lysates from DU145 cells, primary antibody was diluted at 1:1000, 4°C over night