

SEM4G rabbit pAb

Catalog No :	YN3801
Reactivity :	Human;Mouse
Applications :	WB
Target :	SEM4G
Fields :	>>Axon guidance
Gene Name :	SEMA4G KIAA1619
Protein Name :	SEM4G
Human Gene Id :	57715
Human Swiss Prot No :	Q9NTN9
Mouse Gene Id :	26456
Mouse Swiss Prot No :	Q9WUH7
Immunogen :	Synthesized peptide derived from human SEM4G AA range: 387-437
Specificity :	This antibody detects endogenous levels of SEM4G at Human/Mouse
Formulation :	Liquid in PBS containing 50% glycerol, 0.5% BSA and 0.02% sodium azide.
Source :	Polyclonal, Rabbit,IgG
Dilution :	WB 1:500-2000
Purification :	The antibody was affinity-purified from rabbit antiserum by affinity-chromatography using epitope-specific immunogen.
Concentration :	1 mg/ml

Storage Stability : -15°C to -25°C/1 year (Do not lower than -25°C)

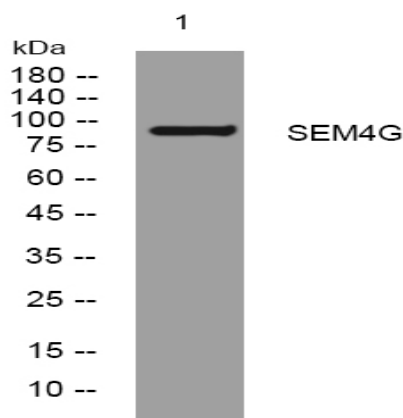
Molecularweight : 92kD

Background : Semaphorins are a large family of conserved secreted and membrane associated proteins which possess a semaphorin (Sema) domain and a PSI domain (found in plexins, semaphorins and integrins) in the N-terminal extracellular portion. Based on sequence and structural similarities, semaphorins are put into eight classes: invertebrates contain classes 1 and 2, viruses have class V, and vertebrates contain classes 3-7. Semaphorins serve as axon guidance ligands via multimeric receptor complexes, some (if not all) containing plexin proteins. Multiple transcript variants encoding different isoforms have been found for this gene. [provided by RefSeq, Feb 2011],

Function : function:May play a role in axon guidance.,similarity:Belongs to the semaphorin family.,similarity:Contains 1 Ig-like C2-type (immunoglobulin-like) domain.,similarity:Contains 1 PSI domain.,similarity:Contains 1 Sema domain.,

Subcellular Location : Cell membrane; Single-pass type I membrane protein.

Products Images



Western blot analysis of lysates from MDA-MB cells, primary antibody was diluted at 1:1000, 4° over night