

S100 (ABT094) Mouse mAb (Ready to Use)

Catalog No :	YM6987R
Reactivity :	Human; Mouse; <input type="checkbox"/> predicted: Rat)
Applications :	IHC
Target :	S100
Gene Name :	S100B
Protein Name :	S100
Human Gene Id :	6285
Human Swiss Prot No :	P04271
Immunogen :	Synthesized peptide derived from human S100 AA range: 2-92
Specificity :	The antibody can specifically recognize human S100B protein, and has a weak reaction with S100A1, but no cross reaction with S100A4 or S100A6.
Formulation :	Liquid in PBS containing 50% glycerol, 0.5% BSA and 0.02% sodium azide.
Source :	Mouse, Monoclonal/IgG2a, Kappa
Dilution :	Ready to use for IHC
Purification :	The antibody was affinity-purified from mouse ascites by affinity-chromatography using specific immunogen.
Storage Stability :	2°C to 8°C/1 year
Background :	The protein encoded by this gene is a member of the S100 family of proteins containing 2 EF-hand calcium-binding motifs. S100 proteins are localized in the cytoplasm and/or nucleus of a wide range of cells, and involved in the regulation of a number of cellular processes such as cell cycle progression and differentiation. S100 genes include at least 13 members which are located as a cluster on chromosome 1q21; however, this gene is located at 21q22.3. This protein may function in Neurite extension, proliferation of melanoma cells,

stimulation of Ca²⁺ fluxes, inhibition of PKC-mediated phosphorylation, astrocytosis and axonal proliferation, and inhibition of microtubule assembly. Chromosomal rearrangements and altered expression of this gene have been implicated in several neurological, neoplastic, and other types of diseases, including Alzheimer's disease, Down's syndrome, epilepsy

Function :

function:Weakly binds calcium but binds zinc very tightly-distinct binding sites with different affinities exist for both ions on each monomer. Physiological concentrations of potassium ion antagonize the binding of both divalent cations, especially affecting high-affinity calcium-binding sites. Binds to and initiates the activation of STK38 by releasing autoinhibitory intramolecular interactions within the kinase.,miscellaneous:In addition to metal-ion binding, this protein is involved with the regulation of protein phosphorylation in brain tissue.,similarity:Belongs to the S-101 family.,similarity:Contains 2 EF-hand domains.,subunit:Dimer of either two alpha chains, or two beta chains, or one alpha and one beta chain. The S100B dimer binds two molecules of STK38 (By similarity). The S100B dimer interacts with two molecules of CAPZA1.,tissue specificity:Although predominant among the wa

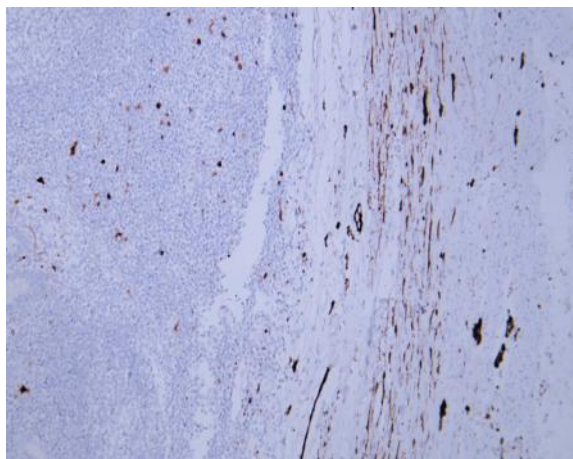
Subcellular Location :

Nuclear, Cytoplasmic

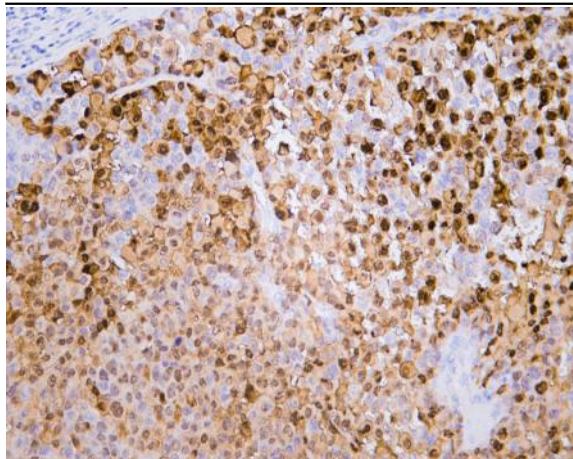
Expression :

Although predominant among the water-soluble brain proteins, S100 is also found in a variety of other tissues.

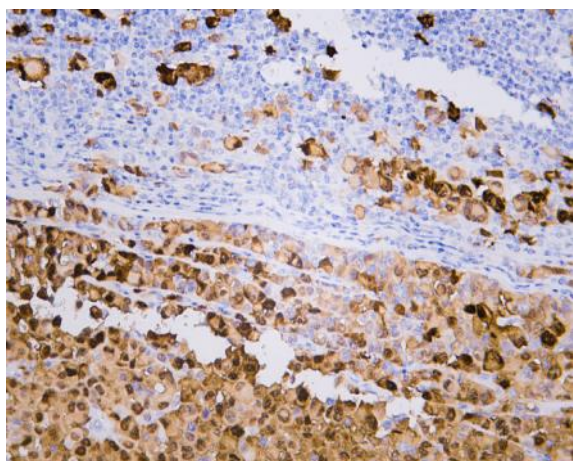
Products Images



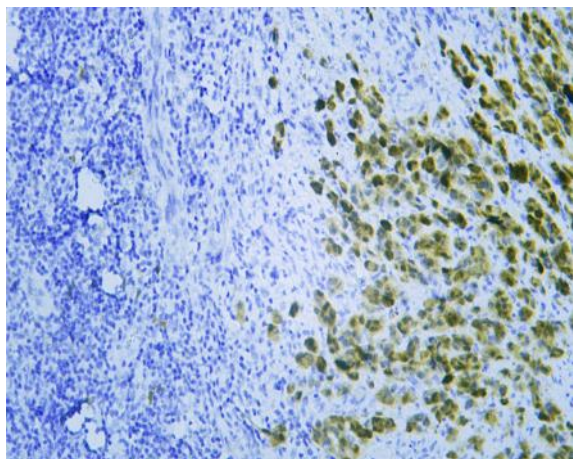
Human appendix tissue was stained with Anti-S100 (ABT094) Antibody



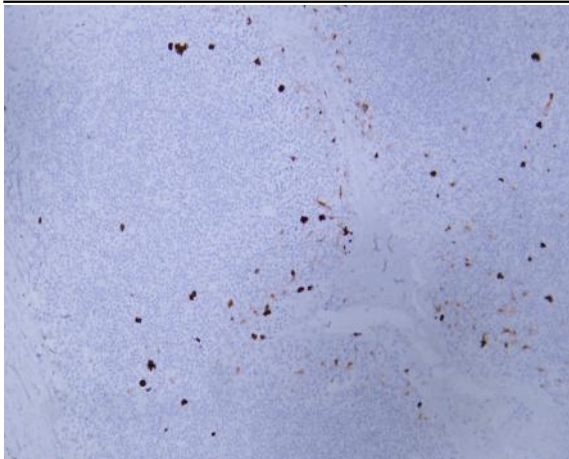
Human malignant melanoma tissue was stained with Anti-S100 (ABT094) Antibody



Human malignant melanoma tissue was stained with Anti-S100 (ABT094) Antibody



Human malignant melanoma tissue was stained with Anti-S100 (ABT094) Antibody



Human tonsil tissue was stained with Anti-S100 (ABT094)
Antibody