

CE025 rabbit pAb

Catalog No :	YN3646
Reactivity :	Human;Rat;Mouse;
Applications :	WB
Target :	CE025
Gene Name :	C5orf25
Protein Name :	CE025
Human Gene Id :	375484
Human Swiss Prot No :	Q8NDZ2
Immunogen :	Synthesized peptide derived from human CE025 AA range: 369-419
Specificity :	This antibody detects endogenous levels of CE025 at Human
Formulation :	Liquid in PBS containing 50% glycerol, 0.5% BSA and 0.02% sodium azide.
Source :	Polyclonal, Rabbit,IgG
Dilution :	WB 1:500-2000
Purification :	The antibody was affinity-purified from rabbit antiserum by affinity-chromatography using epitope-specific immunogen.
Concentration :	1 mg/ml
Storage Stability :	-15°C to -25°C/1 year(Do not lower than -25°C)
Molecularweight :	96kD
Function :	PTM:Phosphorylated upon DNA damage, probably by ATM or ATR.,

Subcellular

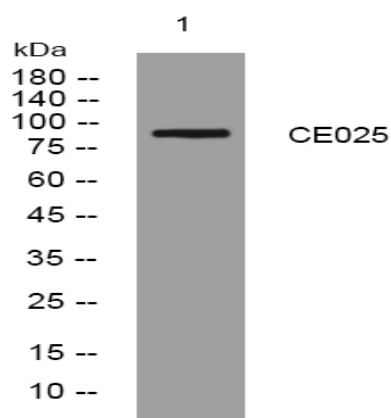
[Isoform 5]: Cytoplasm . Cytoplasm, myofibril, sarcomere .

Location :

Expression :

[Isoform 5]: Skeletal muscle.

Products Images



Western blot analysis of lysates from 3T3 cells, primary antibody was diluted at 1:1000, 4 ° over night