

## PHTF1 rabbit pAb

<b>Catalog No :</b>	YN3340
<b>Reactivity :</b>	Human;Mouse
<b>Applications :</b>	WB
<b>Target :</b>	PHTF1
<b>Gene Name :</b>	PHTF1 PHTF
<b>Protein Name :</b>	PHTF1
<b>Human Gene Id :</b>	10745
<b>Human Swiss Prot No :</b>	Q9UMS5
<b>Mouse Gene Id :</b>	18685
<b>Mouse Swiss Prot No :</b>	Q9QZ09
<b>Immunogen :</b>	Synthesized peptide derived from human PHTF1 AA range: 122-172
<b>Specificity :</b>	This antibody detects endogenous levels of PHTF1 at Human/Mouse
<b>Formulation :</b>	Liquid in PBS containing 50% glycerol, 0.5% BSA and 0.02% sodium azide.
<b>Source :</b>	Polyclonal, Rabbit,IgG
<b>Dilution :</b>	WB 1:500-2000
<b>Purification :</b>	The antibody was affinity-purified from rabbit antiserum by affinity-chromatography using epitope-specific immunogen.
<b>Concentration :</b>	1 mg/ml
<b>Storage Stability :</b>	-15°C to -25°C/1 year(Do not lower than -25°C)

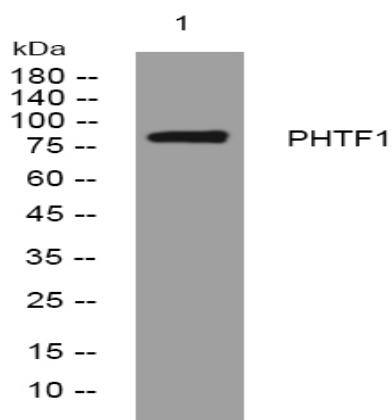
**Observed Band :** 85kD

**Function :** function:May play a role in transcription regulation.,similarity:Contains 1 basic helix-loop-helix (bHLH) domain.,subunit:Interacts with FEM1B.,tissue specificity:Widely expressed with highest levels in testis.,

**Subcellular Location :** Endoplasmic reticulum membrane ; Multi-pass membrane protein . Golgi apparatus, cis-Golgi network membrane ; Multi-pass membrane protein .

**Expression :** Widely expressed with highest levels in testis.

## Products Images



Western blot analysis of lysates from MCF-7 cells, primary antibody was diluted at 1:1000, 4° over night