

## DCDC1 rabbit pAb

|                              |  |
|------------------------------|--|
| <b>Catalog No :</b>          | YN3092   |
| <b>Reactivity :</b>          | Human;Rat;Mouse;   |
| <b>Applications :</b>        | WB   |
| <b>Target :</b>              | DCDC1  |
| <b>Gene Name :</b>           | DCDC1  |
| <b>Protein Name :</b>        | DCDC1  |
| <b>Human Gene Id :</b>       | 341019   |
| <b>Human Swiss Prot No :</b> | P59894   |
| <b>Immunogen :</b>           | Synthesized peptide derived from human DCDC1 AA range: 111-161   |
| <b>Specificity :</b>         | This antibody detects endogenous levels of DCDC1 at Human  |
| <b>Formulation :</b>         | Liquid in PBS containing 50% glycerol, 0.5% BSA and 0.02% sodium azide.  |
| <b>Source :</b>              | Polyclonal, Rabbit,IgG   |
| <b>Dilution :</b>            | WB 1:500-2000  |
| <b>Purification :</b>        | The antibody was affinity-purified from rabbit antiserum by affinity-chromatography using epitope-specific immunogen.  |
| <b>Concentration :</b>       | 1 mg/ml  |
| <b>Storage Stability :</b>   | -15°C to -25°C/1 year(Do not lower than -25°C)   |
| <b>Observed Band :</b>       | 38kD   |
| <b>Background :</b>          | This gene encodes a member of the doublecortin family. The protein encoded by this gene is a hydrophilic, intracellular protein. It contains a single doublecortin domain and is unable to bind microtubules and to regulate microtubule |

polymerization. This gene is mainly expressed in adult testis. It does not have a mouse homolog. [provided by RefSeq, Sep 2010],

**Function :**

similarity:Contains 1 doublecortin domain.,tissue specificity:Highly expressed in testis. Lower levels of expression in lung, kidney, and pancreas. Higher expression in fetal brain than in adult brain.,

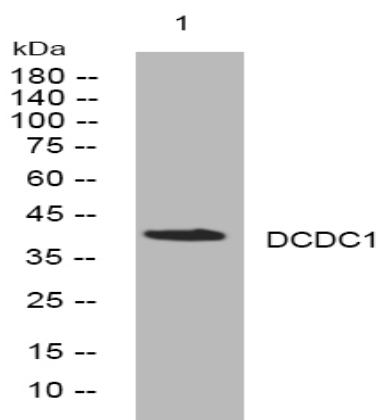
**Subcellular Location :**

intracellular,cytoplasm,

**Expression :**

Fetal brain,

## Products Images



Western blot analysis of lysates from MCF-7 cells, primary antibody was diluted at 1:1000, 4° over night