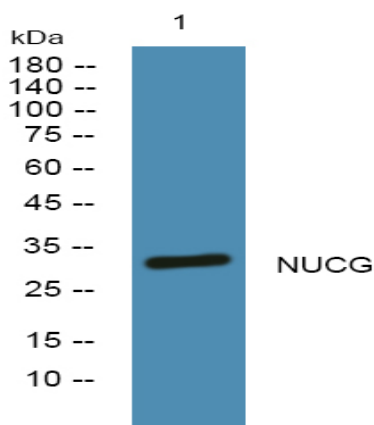


NUCG Polyclonal Antibody

Catalog No :	YN2953
Reactivity :	Human;Mouse
Applications :	WB;ELISA
Target :	NUCG
Fields :	>>Apoptosis
Gene Name :	ENDO G
Protein Name :	Endonuclease G, mitochondrial (Endo G) (EC 3.1.30.-)
Human Gene Id :	2021
Human Swiss Prot No :	Q14249
Mouse Swiss Prot No :	O08600
Immunogen :	Synthesized peptide derived from part region of human protein
Specificity :	NUCG Polyclonal Antibody detects endogenous levels of protein.
Formulation :	Liquid in PBS containing 50% glycerol, and 0.02% sodium azide.
Source :	Polyclonal, Rabbit,IgG
Dilution :	WB 1:500-2000 ELISA 1:5000-20000
Purification :	The antibody was affinity-purified from rabbit antiserum by affinity-chromatography using epitope-specific immunogen.
Concentration :	1 mg/ml
Storage Stability :	-15°C to -25°C/1 year(Do not lower than -25°C)

Observed Band :	32kD
Cell Pathway :	Apoptosis_Inhibition;Apoptosis_Mitochondrial;Apoptosis_Overview;
Background :	The protein encoded by this gene is a nuclear encoded endonuclease that is localized in the mitochondrion. The encoded protein is widely distributed among animals and cleaves DNA at GC tracts. This protein is capable of generating the RNA primers required by DNA polymerase gamma to initiate replication of mitochondrial DNA. [provided by RefSeq, Jul 2008],
Function :	cofactor:Manganese or magnesium.,function:Cleaves DNA at double-stranded (DG)n.(DC)n and at single-stranded (DC)n tracts. In addition to deoxyribonuclease activities, also has ribonuclease (RNase) and RNase H activities. Capable of generating the RNA primers required by DNA polymerase gamma to initiate replication of mitochondrial DNA.,miscellaneous:The active site contains 1 hydrated divalent metal cation that has only 1 direct interaction with the protein; all other interactions are via water molecules.,similarity:Belongs to the DNA/RNA non-specific endonuclease family.,subunit:Homodimer.,
Subcellular Location :	Mitochondrion .
Expression :	Brain,Uterus,

Products Images



Western blot analysis of lysates from Jurkat cells, primary antibody was diluted at 1:1000, 4° over night