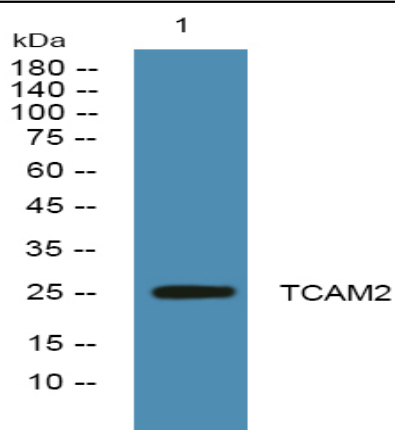


TCAM2 Polyclonal Antibody

Catalog No :	YN2167
Reactivity :	Human;Mouse
Applications :	WB;ELISA
Target :	TCAM2
Fields :	>>NF-kappa B signaling pathway;>>Necroptosis;>>Toll-like receptor signaling pathway;>>Pertussis;>>Hepatitis B;>>PD-L1 expression and PD-1 checkpoint pathway in cancer;>>Lipid and atherosclerosis
Gene Name :	TICAM2 TIRAP3 TIRP TRAM
Protein Name :	TIR domain-containing adapter molecule 2 (TICAM-2) (Putative NF-kappa-B-activating protein 502) (TRIF-related adapter molecule) (Toll-like receptor adaptor protein 3) (Toll/interleukin-1 receptor doma
Human Gene Id :	100302736
Human Swiss Prot No :	Q86XR7
Mouse Swiss Prot No :	Q8BJQ4
Immunogen :	Synthesized peptide derived from part region of human protein
Specificity :	TCAM2 Polyclonal Antibody detects endogenous levels of protein.
Formulation :	Liquid in PBS containing 50% glycerol, and 0.02% sodium azide.
Source :	Polyclonal, Rabbit,IgG
Dilution :	WB 1:500-2000 ELISA 1:5000-20000
Purification :	The antibody was affinity-purified from rabbit antiserum by affinity-chromatography using epitope-specific immunogen.
Concentration :	1 mg/ml

Storage Stability :	-15°C to -25°C/1 year(Do not lower than -25°C)
Observed Band :	25kD
Cell Pathway :	Toll_Like;
Background :	TIRP is a Toll/interleukin-1 receptor (IL1R; MIM 147810) (TIR) domain-containing adaptor protein involved in Toll receptor signaling (see TLR4; MIM 603030).[supplied by OMIM, Apr 2004],
Function :	<p>domain:The TIR domain mediates the interaction with TRAF6.,function:Functions in LPS-TLR4 signaling to regulate the MYD88-independent pathway during the innate immune response to LPS. Also involved in IL1-triggered NF-kappa-B activation, functioning upstream of IRAK1, IRAK2, TRAF6, and IKBKB. Physically bridges TLR4 and TICAM1 and functionally transmits LPS-TLR4 signal to TICAM1.,PTM:Myristoylated. Required for membrane association which is critical for its ability to initiate efficient signaling.,PTM:Phosphorylated by PKCE in response to LPS. Phosphorylation is essential for its function. It is depleted from the membrane upon phosphorylation.,similarity:Belongs to the EMP24/GP25L family.,similarity:Contains 1 GOLD domain.,similarity:Contains 1 TIR domain.,subcellular location:Localized to the plasma membrane as a result of myristoylation. Phosphorylation on Ser-16 leads to its depletion</p>
Subcellular Location :	<p>[Isoform 1]: Cytoplasm . Golgi apparatus. Cell membrane . Endoplasmic reticulum. Early endosome membrane. Late endosome membrane. Cell projection, phagocytic cup . Localized to the plasma membrane as a result of myristoylation. Phosphorylation on Ser-16 leads to its depletion from the membrane. Upon LPS stimulation colocalizes with isoform 2 in late endosomes.; [Isoform 2]: Endoplasmic reticulum. Early endosome membrane. Late endosome membrane. Translocates to late endosomes upon LPS stimulation where it colocalizes with isoform 1.</p>
Expression :	Expressed in spleen, prostate, testis, uterus, small intestine, colon, peripheral blood leukocytes, heart, placenta, lung, liver, skeletal muscle, and pancreas Isoform 2 is ubiquitously expressed (at lower levels than isoform 1).

Products Images



Western blot analysis of lysates from K562 cells, primary antibody was diluted at 1:1000, 4° over night