

## Prolactin (ABT-PRL) IHC kit

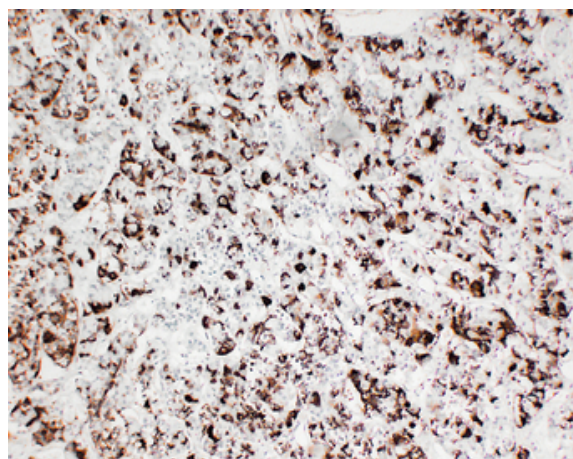
|                              |  |
|------------------------------|--|
| <b>Catalog No :</b>          | IHCM6089   |
| <b>Reactivity :</b>          | Human;   |
| <b>Applications :</b>        | IHC  |
| <b>Target :</b>              | Prolactin  |
| <b>Fields :</b>              | >>Cytokine-cytokine receptor interaction;>>Neuroactive ligand-receptor interaction;>>PI3K-Akt signaling pathway;>>JAK-STAT signaling pathway;>>Prolactin signaling pathway   |
| <b>Gene Name :</b>           | PRL  |
| <b>Protein Name :</b>        | Prolactin (PRL)  |
| <b>Human Gene Id :</b>       | 5617   |
| <b>Human Swiss Prot No :</b> | P01236   |
| <b>Immunogen :</b>           | Synthesized peptide derived from human Prolactin AA range: 100-227   |
| <b>Specificity :</b>         | The antibody can specifically recognize human Prolactin protein.   |
| <b>Source :</b>              | Mouse, Monoclonal/IgG1, kappa  |
| <b>Purification :</b>        | The antibody was affinity-purified from ascites by affinity-chromatography using specific immunogen.   |
| <b>Storage Stability :</b>   | 2°C to 8°C/1 year  |
| <b>Cell Pathway :</b>        | Cytokine-cytokine receptor interaction;Neuroactive ligand-receptor interaction;Jak_STAT;   |
| <b>Background :</b>          | This gene encodes the anterior pituitary hormone prolactin. This secreted hormone is a growth regulator for many tissues, including cells of the immune system. It may also play a role in cell survival by suppressing apoptosis, and it is essential for lactation. Alternative splicing results in multiple transcript variants that encode the same protein. [provided by RefSeq, Aug 2011], |

**Function :** function:Prolactin acts primarily on the mammary gland by promoting lactation.,online information:Prolactin entry,similarity:Belongs to the somatotropin/prolactin family.,

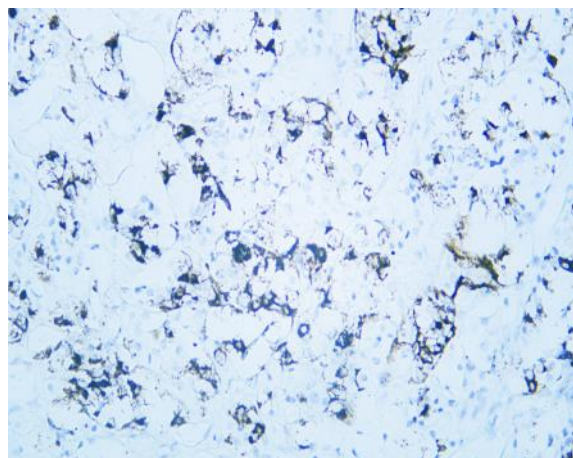
**Subcellular Location :** Cytoplasmic

**Expression :** Mammary gland,Pituitary,Testis,

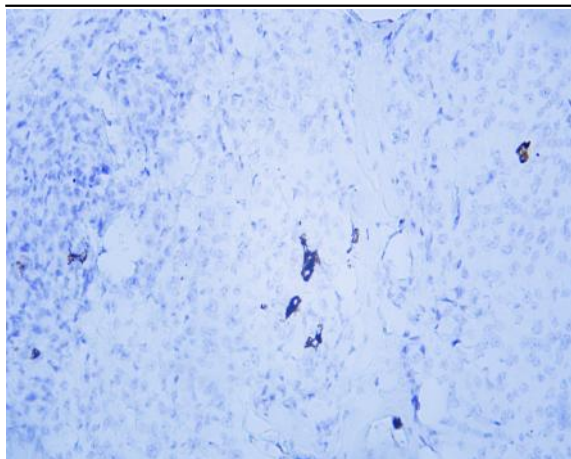
## Products Images



Human pituitary adenoma tissue was stained with Anti-Prolactin (ABT-PRL) Antibody



Human pituitary adenoma tissue was stained with Anti-Prolactin (ABT-PRL) Antibody



Human pituitary adenoma tissue was stained with Anti-Prolactin (ABT-PRL) Antibody