

## Cytokeratin 13 (ABT057) IHC kit

<b>Catalog No :</b>	IHCM6043
<b>Reactivity :</b>	Human;
<b>Applications :</b>	IHC
<b>Target :</b>	Cytokeratin 13
<b>Fields :</b>	>>Estrogen signaling pathway;>>Staphylococcus aureus infection
<b>Gene Name :</b>	KRT13
<b>Protein Name :</b>	47 kDa cytokeratin;CK-13;CK13;Cytokeratin 13;Cytokeratin-13;K13;K1C13_HUMAN;Ka13;Keratin 13;Keratin;keratin type I cytoskeletal 13;Keratin-13;Krt-1.13;Krt1-13;KRT13;MGC161462;MGC3781;type I cytoskelet
<b>Human Swiss Prot No :</b>	P13646
<b>Mouse Swiss Prot No :</b>	P08730
<b>Rat Swiss Prot No :</b>	Q6IFV4
<b>Immunogen :</b>	Synthesized peptide derived from human Cytokeratin 13 AA range: 400-458
<b>Specificity :</b>	The antibody can specifically recognize human CK13 protein.
<b>Source :</b>	Mouse, Monoclonal/IgG1, kappa
<b>Purification :</b>	The antibody was affinity-purified from ascites by affinity-chromatography using specific immunogen.
<b>Storage Stability :</b>	2°C to 8°C/1 year
<b>Background :</b>	The protein encoded by this gene is a member of the keratin gene family. The keratins are intermediate filament proteins responsible for the structural integrity of epithelial cells and are subdivided into cytokeratins and hair keratins. Most of the type I cytokeratins consist of acidic proteins which are arranged in pairs of heterotypic keratin chains. This type I cytokeratin is paired with keratin 4 and

expressed in the suprabasal layers of non-cornified stratified epithelia. Mutations in this gene and keratin 4 have been associated with the autosomal dominant disorder White Sponge Nevus. The type I cytokeratins are clustered in a region of chromosome 17q21.2. Alternative splicing of this gene results in multiple transcript variants; however, not all variants have been described. [provided by RefSeq, Jul 2008],

## Function :

disease:Defects in KRT13 are a cause of white sponge nevus of cannon (WSN) [MIM:193900]. WSN is a rare autosomal dominant disorder which predominantly affects non-cornified stratified squamous epithelia. Clinically, it is characterized by the presence of soft, white, and spongy plaques in the oral mucosa. The characteristic histopathologic features are epithelial thickening, parakeratosis, and vacuolization of the suprabasal layer of oral epithelial keratinocytes. Less frequently the mucous membranes of the nose, esophagus, genitalia and rectum are involved.,miscellaneous:There are two types of cytoskeletal and microfibrillar keratin: I (acidic; 40-55 kDa) and II (neutral to basic; 56-70 kDa).,online information:Keratin-13 entry,PTM:O-glycosylated; glycans consist of single N-acetylglucosamine residues.,similarity:Belongs to the intermediate filament family.,subunit:Heterotetramer of two

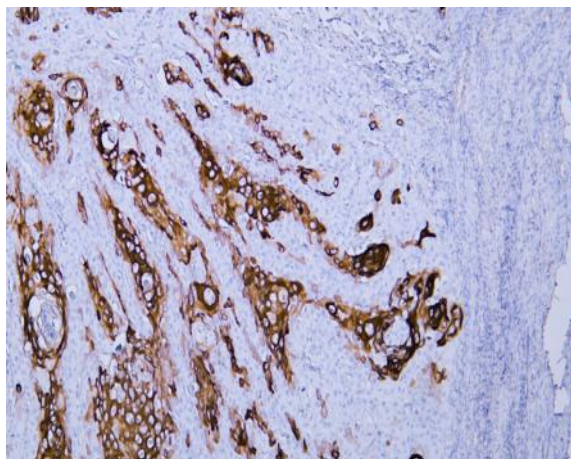
## Subcellular Location :

Cytoplasmic, Membranous

## Expression :

Tonsil

## Products Images



Human cervical squamous cell carcinoma tissue was stained with Anti-Cytokeratin 13 (ABT057) Antibody