

## Cytokeratin 4 (ABT-CK4) IHC kit

<b>Catalog No :</b>	IHCM6038
<b>Reactivity :</b>	Human;
<b>Applications :</b>	IHC
<b>Target :</b>	Cytokeratin 4
<b>Gene Name :</b>	KRT4 CYK4
<b>Protein Name :</b>	Keratin, type II cytoskeletal 4 (Cytokeratin-4) (CK-4) (Keratin-4) (K4) (Type-II keratin Kb4)
<b>Human Swiss Prot No :</b>	P19013
<b>Immunogen :</b>	Synthesized peptide derived from human Cytokeratin 4 AA range: 400-534
<b>Specificity :</b>	The antibody can specifically recognize human CK4 protein, and shows no cross reaction with CK5, 6, 7, 8, 14, 15, 17, 20.
<b>Source :</b>	Mouse, Monoclonal/IgG2a, kappa
<b>Purification :</b>	The antibody was affinity-purified from ascites by affinity-chromatography using specific immunogen.
<b>Storage Stability :</b>	2°C to 8°C/1 year
<b>Background :</b>	keratin 4(KRT4) Homo sapiens The protein encoded by this gene is a member of the keratin gene family. The type II cytokeratins consist of basic or neutral proteins which are arranged in pairs of heterotypic keratin chains coexpressed during differentiation of simple and stratified epithelial tissues. This type II cytokeratin is specifically expressed in differentiated layers of the mucosal and esophageal epithelia with family member KRT13. Mutations in these genes have been associated with White Sponge Nevus, characterized by oral, esophageal, and anal leukoplakia. The type II cytokeratins are clustered in a region of chromosome 12q12-q13. [provided by RefSeq, Jul 2008],
<b>Function :</b>	disease:Defects in KRT4 are a cause of white sponge nevus of cannon (WSN) [MIM:193900]. WSN is a rare autosomal dominant disorder which predominantly

affects non-cornified stratified squamous epithelia. Clinically, it is characterized by the presence of soft, white, and spongy plaques in the oral mucosa. The characteristic histopathologic features are epithelial thickening, parakeratosis, and vacuolization of the suprabasal layer of oral epithelial keratinocytes. Less frequently the mucous membranes of the nose, esophagus, genitalia and rectum are involved.,miscellaneous:There are two types of cytoskeletal and microfibrillar keratin: I (acidic; 40-55 kDa) and II (neutral to basic; 56-70 kDa),polymorphism:Three alleles of K4 are known: K4A2 (shown here), K4A1 and K4B.,similarity:Belongs to the intermediate filament family.,subunit:Heterotetramer of two type I and two type II keratins. Ke

### Subcellular

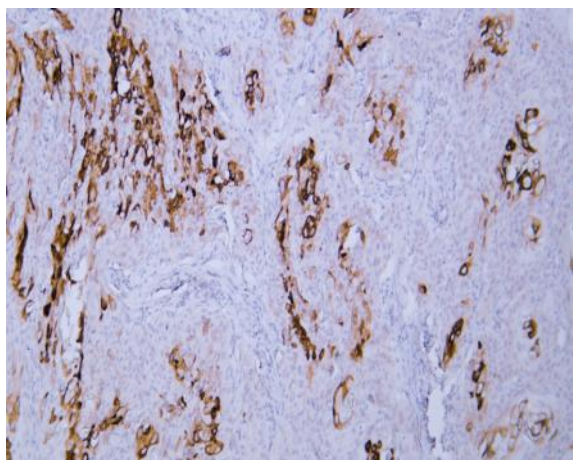
### Location :

### Expression :

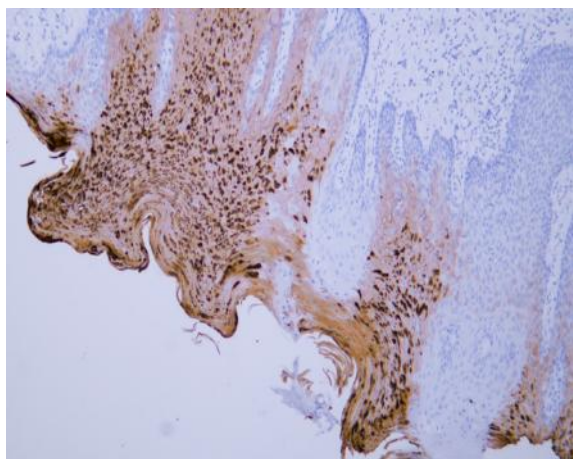
Cytoplasmic, Membranous

Detected in the suprabasal layer of the stratified epithelium of the esophagus, exocervix, vagina, mouth and lingual mucosa, and in cells and cell clusters in the mucosa and serous gland ducts of the esophageal submucosa (at protein level). Expressed widely in the exocervix and esophageal epithelium, with lowest levels detected in the basal cell layer.

## Products Images



Human cervical squamous cell carcinoma tissue was stained with Anti-Cytokeratin 4 (ABT-CK4) Antibody



Human oral squamous cell carcinoma tissue was stained with Anti-Cytokeratin 4 (ABT-CK4) Antibody