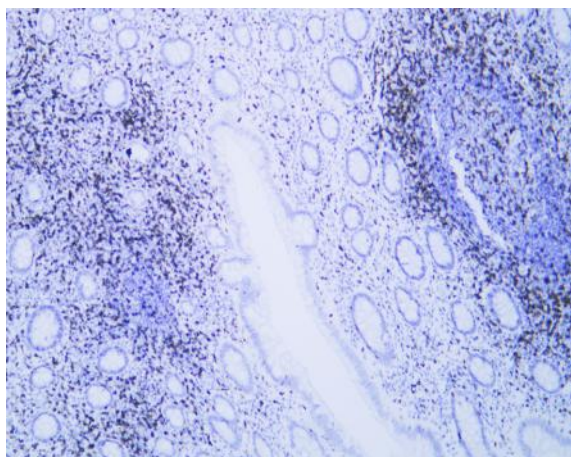


CD2 (ABT529) IHC kit

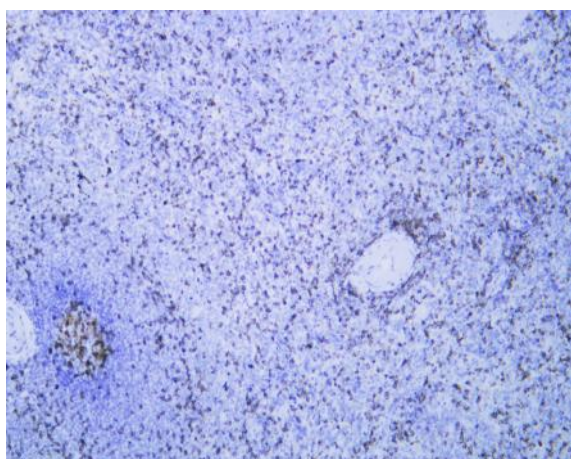
Catalog No :	IHCM6021
Reactivity :	Human;
Applications :	IHC
Target :	CD2
Fields :	>>Cell adhesion molecules;>>Hematopoietic cell lineage
Gene Name :	CD2 SRBC
Protein Name :	CD 2;CD2;CD2 antigen (p50), sheep red blood cell receptor;CD2 antigen;CD2 molecule;CD2_HUMAN;Erythrocyte receptor;FLJ46032;LFA-2;LFA-3 receptor;LFA2;LFA3 receptor;Ly-37;Lymphocyte function antigen 2;I
Human Swiss Prot No :	P06729
Mouse Swiss Prot No :	P08920
Rat Swiss Prot No :	P08921
Immunogen :	Synthesized peptide derived from human CD2 AA range: 1-100
Specificity :	The antibody can specifically recognize human CD2 protein.
Source :	Mouse, Monoclonal/IgG2b, kappa
Purification :	The antibody was affinity-purified from ascites by affinity-chromatography using specific immunogen.
Storage Stability :	2°C to 8°C/1 year
Background :	The protein encoded by this gene is a surface antigen found on all peripheral blood T-cells. The encoded protein interacts with LFA3 (CD58) on antigen presenting cells to optimize immune recognition. A locus control region (LCR) has been found in the 3' flanking sequence of this gene. [provided by RefSeq, Jun 2016],

Function :	function:CD2 interacts with lymphocyte function-associated antigen (LFA-3) and CD48/BCM1 to mediate adhesion between T-cells and other cell types. CD2 is implicated in the triggering of T-cells, the cytoplasmic domain is implicated in the signaling function.,online information:CD2 entry,similarity:Contains 1 Ig-like C2-type (immunoglobulin-like) domain.,similarity:Contains 1 Ig-like V-type (immunoglobulin-like) domain.,subunit:Interacts with CD2AP (By similarity). Interacts with PSTPIP1.,
Subcellular Location :	Membranous
Expression :	Tonsil

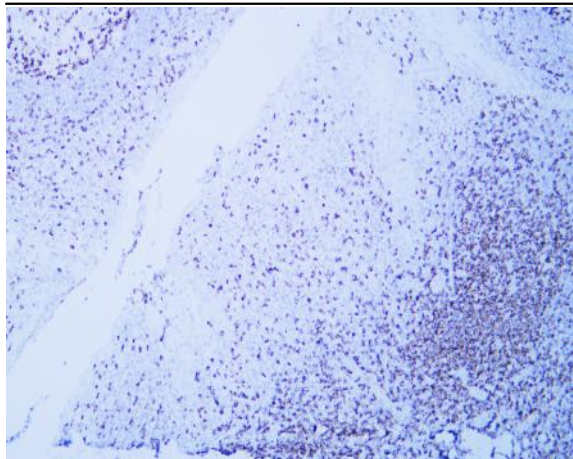
Products Images



Human appendix tissue was stained with anti-CD2(ABT529) antibody.



Human spleen tissue was stained with anti-CD2(ABT529) antibody.



Human tonsil tissue was stained with anti-CD2(ABT529) antibody.