

## CD23 (ABT-CD23) IHC kit

<b>Catalog No :</b>	IHCM6014
<b>Reactivity :</b>	Human;
<b>Applications :</b>	IHC
<b>Target :</b>	CD23
<b>Fields :</b>	>>Hematopoietic cell lineage;>>Epstein-Barr virus infection
<b>Gene Name :</b>	FCER2 CD23A CLEC4J FCE2 IGEBF
<b>Protein Name :</b>	Low affinity immunoglobulin epsilon Fc receptor (BLAST-2) (C-type lectin domain family 4 member J) (Fc-epsilon-RII) (Immunoglobulin E-binding factor) (Lymphocyte IgE receptor) (CD antigen CD23) [Cleav
<b>Human Gene Id :</b>	2208
<b>Human Swiss Prot No :</b>	P06734
<b>Immunogen :</b>	Synthesized peptide derived from human CD23 AA range: 200-321
<b>Specificity :</b>	The antibody can specifically recognize human CD23 protein.
<b>Source :</b>	Mouse, Monoclonal/IgG1, kappa
<b>Purification :</b>	The antibody was affinity-purified from ascites by affinity-chromatography using specific immunogen.
<b>Storage Stability :</b>	2°C to 8°C/1 year
<b>Cell Pathway :</b>	Hematopoietic cell lineage;
<b>Background :</b>	The protein encoded by this gene is a B-cell specific antigen, and a low-affinity receptor for IgE. It has essential roles in B cell growth and differentiation, and the regulation of IgE production. This protein also exists as a soluble secreted form, then functioning as a potent mitogenic growth factor. Alternatively spliced transcript variants encoding different isoforms have been described for this gene.[provided by RefSeq, Jul 2011],

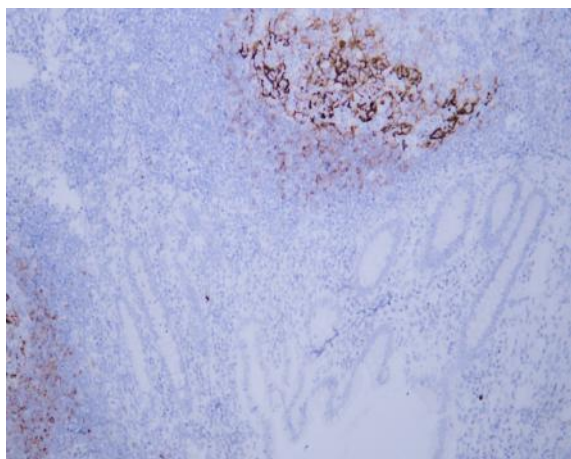
**Function :** function:This receptor has essential roles in the regulation of IgE production and in the differentiation of B-cells (it is a B-cell-specific antigen).,miscellaneous:There are two kinds of Fc receptors for IgE, which differ in both structure and function: high affinity receptors on basophils and mast cells and low affinity receptors on lymphocytes and monocytes.,online information:CD23,PTM:N- and O-glycosylated.,similarity:Contains 1 C-type lectin domain.,subcellular location:Also exists as a soluble excreted form.,

**Subcellular Location :** Membranous

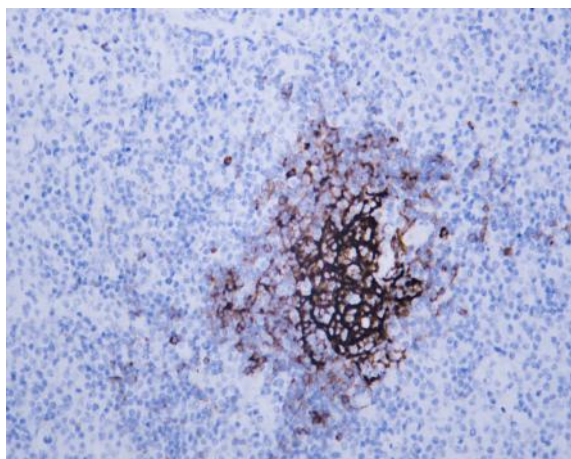
**Location :**

**Expression :** B-cell,Blood,

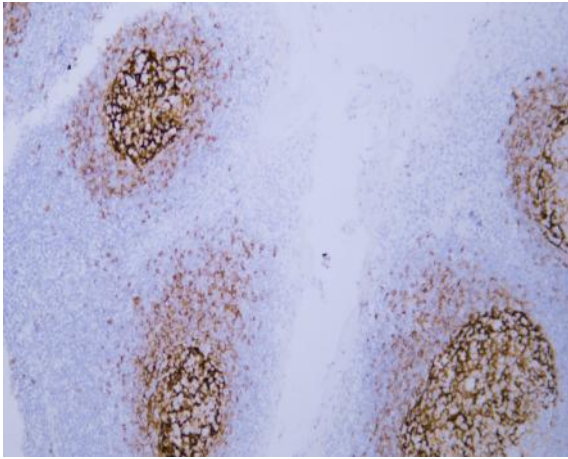
## Products Images



Human appendix tissue was stained with anti-CD23(ABT-CD23) antibody.



Human diffuse large B-cell lymphoma tissue was stained with Anti-CD23 (ABT-CD23) Antibody



Human tonsil tissue was stained with anti-CD23(ABT-CD23) antibody.