

SFT2A Polyclonal Antibody

Catalog No :	YN1522
Reactivity :	Human;Rat;Mouse
Applications :	WB;ELISA
Target :	SFT2A
Gene Name :	SFT2D1 C6orf83
Protein Name :	Vesicle transport protein SFT2A (SFT2 domain-containing protein 1) (pRGR1)
Human Gene Id :	113402
Human Swiss Prot No :	Q8WV19
Mouse Swiss Prot No :	Q5SSN7
Rat Swiss Prot No :	Q5U3Y5
Immunogen :	Synthesized peptide derived from part region of human protein
Specificity :	SFT2A Polyclonal Antibody detects endogenous levels of protein.
Formulation :	Liquid in PBS containing 50% glycerol, and 0.02% sodium azide.
Source :	Polyclonal, Rabbit,IgG
Dilution :	WB 1:500-2000 ELISA 1:5000-20000
Purification :	The antibody was affinity-purified from rabbit antiserum by affinity-chromatography using epitope-specific immunogen.
Concentration :	1 mg/ml
Storage Stability :	-15°C to -25°C/1 year(Do not lower than -25°C)

Observed Band : 17kD

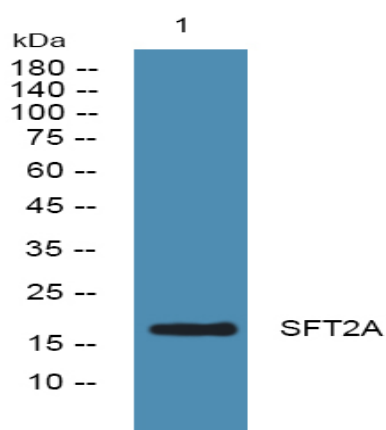
Background : function:May be involved in fusion of retrograde transport vesicles derived from an endocytic compartment with the Golgi complex.,similarity:Belongs to the SFT2 family.,

Function : function:May be involved in fusion of retrograde transport vesicles derived from an endocytic compartment with the Golgi complex.,similarity:Belongs to the SFT2 family.,

Subcellular Location : Membrane ; Multi-pass membrane protein .

Expression : Brain,Choriocarcinoma,

Products Images



Western blot analysis of lysates from K562 cells, primary antibody was diluted at 1:1000, 4° over night