

RND3 Polyclonal Antibody

Catalog No :	YN1227
Reactivity :	Human;Rat;Mouse
Applications :	WB;ELISA
Target :	RND3
Gene Name :	RND3 ARHE RHO8 RHOE
Protein Name :	Rho-related GTP-binding protein RhoE (Protein MemB) (Rho family GTPase 3) (Rho-related GTP-binding protein Rho8) (Rnd3)
Human Gene Id :	390
Human Swiss Prot No :	P61587
Mouse Swiss Prot No :	P61588
Rat Swiss Prot No :	Q6SA80
Immunogen :	Synthesized peptide derived from human protein . at AA range: 150-230
Specificity :	RND3 Polyclonal Antibody detects endogenous levels of protein.
Formulation :	Liquid in PBS containing 50% glycerol, and 0.02% sodium azide.
Source :	Polyclonal, Rabbit,IgG
Dilution :	WB 1:500-2000 ELISA 1:5000-20000
Purification :	The antibody was affinity-purified from rabbit antiserum by affinity-chromatography using epitope-specific immunogen.
Concentration :	1 mg/ml
Storage Stability :	-15°C to -25°C/1 year(Do not lower than -25°C)

Observed Band : 26kD

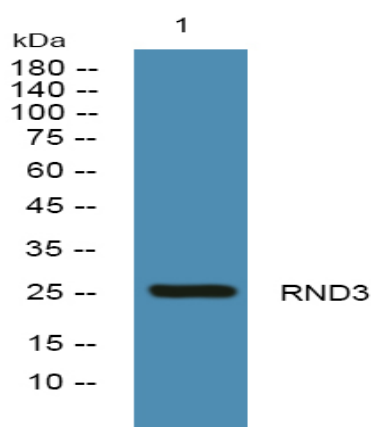
Background : This gene encodes a protein which is a member of the small GTPase protein superfamily. The encoded protein binds only GTP but has no GTPase activity, and appears to act as a negative regulator of cytoskeletal organization leading to loss of adhesion. Multiple alternatively spliced variants, encoding the same protein, have been identified. [provided by RefSeq, Dec 2011],

Function : function: Binds GTP but lacks intrinsic GTPase activity and is resistant to Rho-specific GTPase-activating proteins., similarity: Belongs to the small GTPase superfamily. Rho family., subunit: Binds ROCK1 (By similarity). Interacts with UBXD5., tissue specificity: Ubiquitous.,

Subcellular Location : Golgi apparatus membrane; Peripheral membrane protein.

Expression : Ubiquitous.

Products Images



Western blot analysis of lysates from K562 cells, primary antibody was diluted at 1:1000, 4° over night