

## Annexin A1 (ABT-ANXA1) mouse mAb

<b>Catalog No :</b>	YM6004
<b>Reactivity :</b>	Human (predicted: Mouse; Rat)
<b>Applications :</b>	IHC;WB;ELISA
<b>Target :</b>	Annexin I
<b>Gene Name :</b>	ANXA1 ANX1 LPC1
<b>Protein Name :</b>	Annexin A1 (Annexin I) (Annexin-1) (Calpactin II) (Calpactin-2) (Chromobindin-9) (Lipocortin I) (Phospholipase A2 inhibitory protein) (p35)
<b>Human Gene Id :</b>	301
<b>Human Swiss Prot No :</b>	P04083
<b>Immunogen :</b>	Synthesized peptide derived from human Annexin A1 AA range: 250-346
<b>Specificity :</b>	This antibody detects endogenous levels of human Annexin A1. Heat-induced epitope retrieval (HIER) TRIS-EDTA of pH8.0 was highly recommended as antigen repair method in paraffin section
<b>Formulation :</b>	Liquid in PBS containing 50% glycerol, 0.5% BSA and 0.02% sodium azide.
<b>Source :</b>	Mouse, Monoclonal/IgG1, Kappa
<b>Dilution :</b>	IHC 1:200-400, WB 1:100-2000, ELISA 1:5000-20000
<b>Purification :</b>	The antibody was affinity-purified from mouse ascites by affinity-chromatography using specific immunogen.
<b>Storage Stability :</b>	-15°C to -25°C/1 year (Do not lower than -25°C)
<b>Molecularweight :</b>	39kD
<b>Background :</b>	This gene encodes a membrane-localized protein that binds phospholipids. This protein inhibits phospholipase A2 and has anti-inflammatory activity. Loss of

function or expression of this gene has been detected in multiple tumors.  
[provided by RefSeq, Dec 2014],

### Function :

domain:A pair of annexin repeats may form one binding site for calcium and phospholipid.,function:Calcium/phospholipid-binding protein which promotes membrane fusion and is involved in exocytosis. This protein regulates phospholipase A2 activity. It seems to bind from two to four calcium ions with high affinity.,PTM:Phosphorylated by protein kinase C, epidermal growth factor receptor/kinase and TRPM7. Phosphorylation results in loss of the inhibitory activity.,similarity:Belongs to the annexin family.,similarity:Contains 1 annexin repeat.,similarity:Contains 2 annexin repeats.,similarity:Contains 4 annexin repeats.,subcellular location:Found in the cilium, nucleus and basolateral cell membrane of ciliated cells in the tracheal endothelium (By similarity). Found in the cytoplasm of type II pneumocytes and alveolar macrophages.,subunit:Homodimer in placenta (20%); linked by transglutamylation

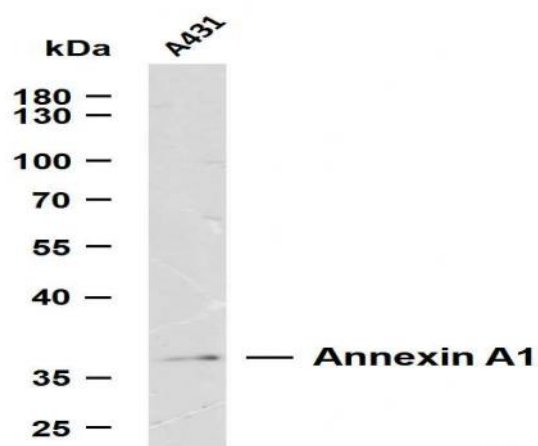
### Subcellular Location :

Nucleus . Cytoplasm . Cell projection, cilium . Cell membrane . Membrane ; Peripheral membrane protein . Endosome membrane ; Peripheral membrane protein . Basolateral cell membrane . Apical cell membrane . Lateral cell membrane . Secreted . Secreted, extracellular space . Cell membrane ; Peripheral membrane protein ; Extracellular side . Secreted, extracellular exosome . Cytoplasmic vesicle, secretory vesicle lumen . Cell projection, phagocytic cup . Early endosome . Cytoplasmic vesicle membrane ; Peripheral membrane protein . Secreted, at least in part via exosomes and other secretory vesicles. Detected in exosomes and other extracellular vesicles (PubMed:25664854). Alternatively, the secretion is dependent on protein unfolding and facilitated by the cargo receptor TMED10; it results in t

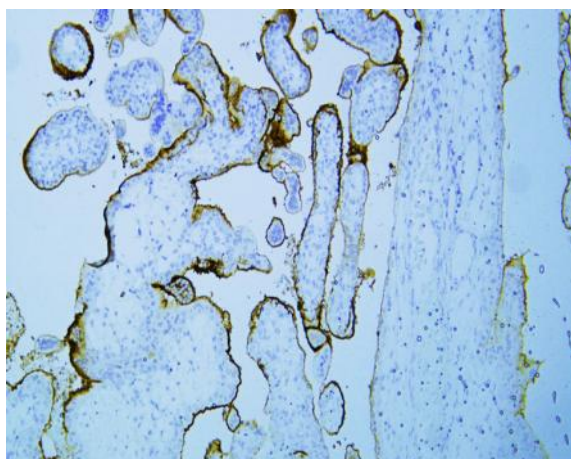
### Expression :

Detected in resting neutrophils (PubMed:10772777). Detected in peripheral blood T-cells (PubMed:17008549). Detected in extracellular vesicles in blood serum from patients with inflammatory bowel disease, but not in serum from healthy donors (PubMed:25664854). Detected in placenta (at protein level) (PubMed:2532504). Detected in liver.

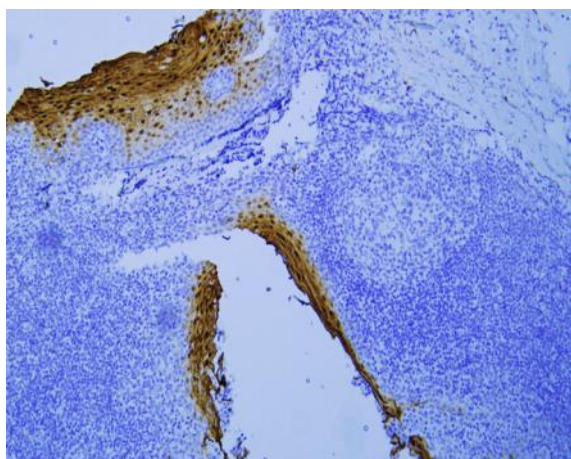
## Products Images



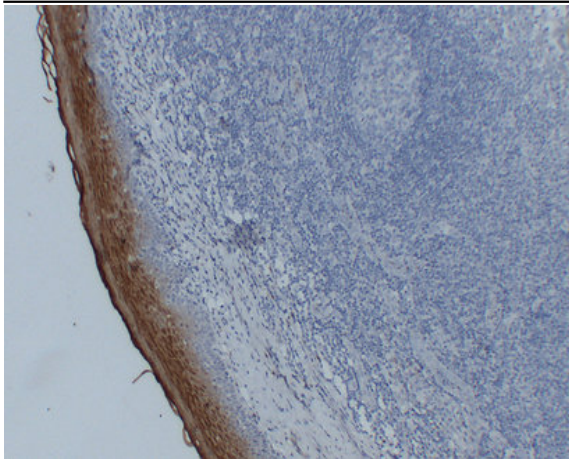
Whole cell lysates were separated by 10% SDS-PAGE, and the membrane was blotted with anti-Annexin A1 (ABT-ANXA1) antibody. The HRP-conjugated Goat anti-Mouse IgG(H + L) antibody was used to detect the antibody. Lane 1: A431  
Predicted band size: 39kDa Observed band size: 37kDa



Human placenta tissue was stained with Anti-Annexin A1 (ABT-ANXA1) Antibody



Human tonsil tissue was stained with Anti-Annexin A1 (ABT-ANXA1) Antibody



Immunohistochemical analysis of paraffin-embedded Tonsil. 1, Antibody was diluted at 1:200(4° overnight). 2, Tris-EDTA,pH8.0 was used for antigen retrieval. 3,Secondary antibody was diluted at 1:200(room temperature, 30min).