

MAGE-C1 (ABT339) Mouse mAb

Catalog No :	YM6887
Reactivity :	Human;
Applications :	IHC;WB;ELISA
Target :	MAGE-C1
Gene Name :	MAGEC1
Protein Name :	MAGE-C1
Human Gene Id :	9947
Human Swiss Prot No :	O60732
Immunogen :	Synthesized peptide derived from human MAGE-C1 AA range: 700-800
Specificity :	The antibody can specifically recognize human MAGE-C1 protein. In western blotting of K562 cell lysate, the antibody can label a 190KDa band corresponding to MAGE-C1.
Formulation :	Liquid in PBS containing 50% glycerol, 0.5% BSA and 0.02% sodium azide.
Source :	Mouse, Monoclonal/IgG1, Kappa
Dilution :	IHC 1:200-400, WB 1:200-1000, ELISA 1:5000-20000
Purification :	The antibody was affinity-purified from mouse ascites by affinity-chromatography using specific immunogen.
Storage Stability :	-15°C to -25°C/1 year(Do not lower than -25°C)
Molecularweight :	124kD
Background :	This gene is a member of the melanoma antigen gene (MAGE) family. The proteins of this family are tumor-specific antigens that can be recognized by autologous cytolytic T lymphocytes. This protein contains a large number of

unique short repetitive sequences in front of the MAGE-homologous sequence, and therefore is about 800 aa longer than the other MAGE proteins. [provided by RefSeq, Jul 2008],

Function :

similarity:Contains 1 MAGE domain.,tissue specificity:Expressed in testis and in tumors of a wide variety of histologic types.,

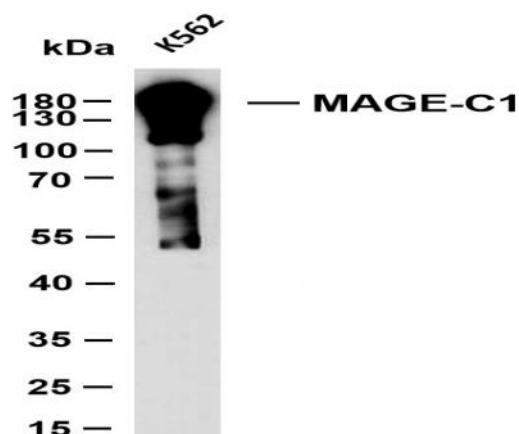
Subcellular Location :

Cytoplasmic

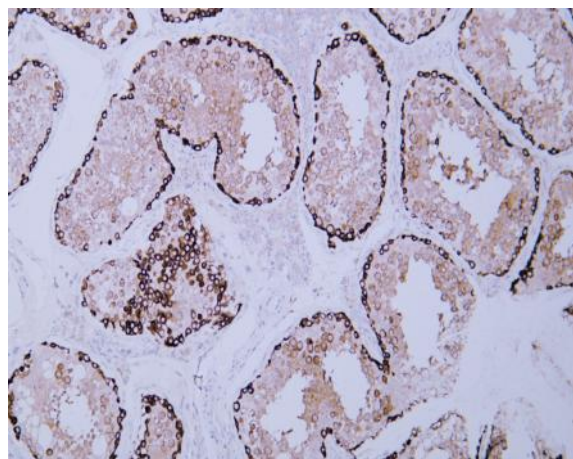
Expression :

Expressed in testis and in tumors of a wide variety of histologic types.

Products Images



K562 whole cell lysates were separated by 10% SDS-PAGE, and the membrane was blotted with anti-MAGE-C1 (ABT339) antibody. The HRP-conjugated Goat anti-Mouse IgG(H + L) antibody was used to detect the antibody. Lane 1: K562 Predicted band size: 124kDa Observed band size: 180kDa



Human testis tissue was stained with Anti-MAGE-C1 (ABT339) Antibody