

Leptin mouse mAb

Catalog No :	YM1446
Reactivity :	Human
Applications :	ELISA
Target :	Leptin
Fields :	>>Cytokine-cytokine receptor interaction;>>Neuroactive ligand-receptor interaction;>>AMPK signaling pathway;>>JAK-STAT signaling pathway;>>Adipocytokine signaling pathway;>>Non-alcoholic fatty liver disease
Gene Name :	lep
Human Gene Id :	3952
Human Swiss Prot No :	P41159
Mouse Swiss Prot No :	P41160
Immunogen :	Purified recombinant full length of human Leptin protein expressed in E.coli.
Specificity :	This antibody detects human Leptin proteins.
Formulation :	Liquid in PBS containing 50% glycerol, 0.5% BSA and 0.02% sodium azide.
Source :	Monoclonal, Mouse
Dilution :	ELISA 1:10000-20000
Purification :	The antibody was affinity-purified from mouse ascites by affinity-chromatography using epitope-specific immunogen.
Concentration :	1 mg/ml
Storage Stability :	-15°C to -25°C/1 year(Do not lower than -25°C)
Observed Band :	16kD

Cell Pathway : Cytokine-cytokine receptor interaction;Neuroactive ligand-receptor interaction;Jak_STAT;Adipocytokine;

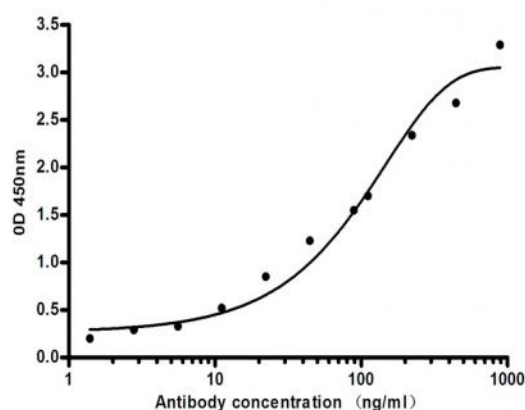
Background : This gene encodes a protein that is secreted by white adipocytes, and which plays a major role in the regulation of body weight. This protein, which acts through the leptin receptor, functions as part of a signaling pathway that can inhibit food intake and/or regulate energy expenditure to maintain constancy of the adipose mass. This protein also has several endocrine functions, and is involved in the regulation of immune and inflammatory responses, hematopoiesis, angiogenesis and wound healing. Mutations in this gene and/or its regulatory regions cause severe obesity, and morbid obesity with hypogonadism. This gene has also been linked to type 2 diabetes mellitus development. [provided by RefSeq, Jul 2008],

Function : disease:Defects in LEP may be a cause of autosomal recessive obesity [MIM:601665].,function:May function as part of a signaling pathway that acts to regulate the size of the body fat depot. An increase in the level of LEP may act directly or indirectly on the CNS to inhibit food intake and/or regulate energy expenditure as part of a homeostatic mechanism to maintain constancy of the adipose mass.,online information:Leptin entry,similarity:Belongs to the leptin family.,subunit:Interacts with SIGLEC6.,

Subcellular Location : Secreted .

Expression : Adipose tissue is the main source of leptin. It is also produced by other peripheral tissues such as the skeletal muscle (PubMed:7789654, PubMed:16052473, PubMed:12448771). Expressed by intercalated and striated tracts of submandibular and parotid salivary gland intralobular ducts (PubMed:12448771). Detected by fundic epithelium of the gastric mucosa (PubMed:10896907). Secreted into blood and gastric juice (PubMed:10896907).

Products Images



Indirect ELISA assay for anti-Leptin mouse mAb. Antigen coating concentration: 4ug/ml.