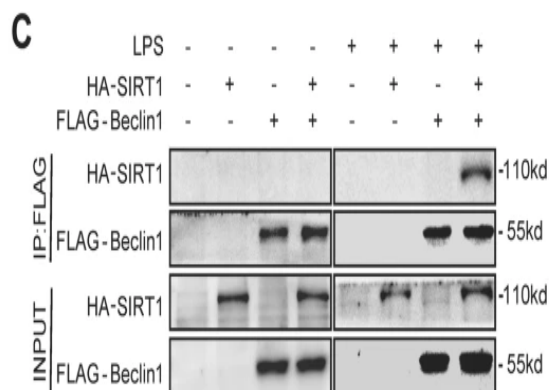


## Beclin 1 mouse mAb

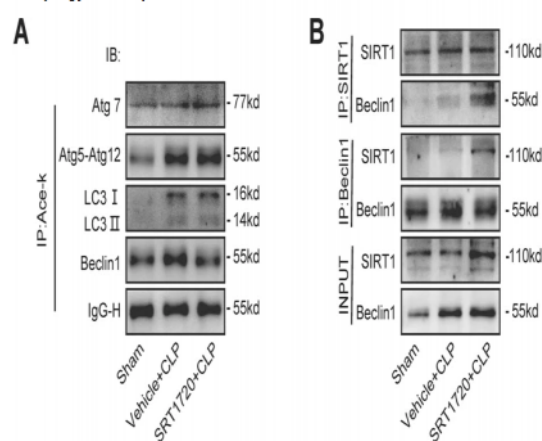
<b>Catalog No :</b>	YM1326
<b>Reactivity :</b>	Human;Mouse;Rat;Monkey;Hamster
<b>Applications :</b>	WB;IP
<b>Target :</b>	Beclin 1
<b>Fields :</b>	>>Autophagy - other;>>Mitophagy - animal;>>Autophagy - animal;>>Apoptosis - multiple species;>>Apelin signaling pathway;>>Alzheimer disease;>>Amyotrophic lateral sclerosis;>>Huntington disease;>>Spinocerebellar ataxia;>>Pathways of neurodegeneration - multiple diseases;>>Shigellosis;>>Kaposi sarcoma-associated herpesvirus infection
<b>Gene Name :</b>	becn1
<b>Human Gene Id :</b>	8678
<b>Human Swiss Prot No :</b>	Q14457
<b>Mouse Swiss Prot No :</b>	O88597
<b>Immunogen :</b>	Purified recombinant human Beclin 1 protein fragments expressed in E.coli.
<b>Specificity :</b>	This antibody detects endogenous levels of Beclin 1 and does not cross-react with related proteins.
<b>Formulation :</b>	Liquid in PBS containing 50% glycerol, 0.5% BSA and 0.02% sodium azide.
<b>Source :</b>	Monoclonal, Mouse
<b>Dilution :</b>	wb 1:1000 IP:1:50-200
<b>Purification :</b>	The antibody was affinity-purified from mouse ascites by affinity-chromatography using epitope-specific immunogen.
<b>Concentration :</b>	1 mg/ml

<b>Storage Stability :</b>	-15°C to -25°C/1 year(Do not lower than -25°C)
<b>Observed Band :</b>	55kD
<b>Cell Pathway :</b>	Regulation of autophagy;
<b>Background :</b>	<p>beclin 1(BECN1) Homo sapiens This gene encodes a protein that regulates autophagy, a catabolic process of degradation induced by starvation. The encoded protein is a component of the phosphatidylinositol-3-kinase (PI3K) complex which mediates vesicle-trafficking processes. This protein is thought to play a role in multiple cellular processes, including tumorigenesis, neurodegeneration and apoptosis. Alternative splicing results in multiple transcript variants. [provided by RefSeq, Sep 2015],</p>
<b>Function :</b>	<p>function:Plays a central role in autophagy (By similarity). May play a role in antiviral host defense. Protects against infection by a neurovirulent strain of Sindbis virus.,similarity:Belongs to the beclin family.,subcellular location:Expressed in dendrites and cell bodies of cerebellar Purkinje cells.,subunit:Interacts with GOPC and GRID2. Interacts with AMBRA1. Probably forms a complex with AMBRA1 and PIK3C3 (By similarity). Interacts with BCL2 and BCL2L1.,tissue specificity:Ubiquitous.,</p>
<b>Subcellular Location :</b>	<p>Cytoplasm . Golgi apparatus, trans-Golgi network membrane ; Peripheral membrane protein . Endosome membrane ; Peripheral membrane protein . Endoplasmic reticulum membrane ; Peripheral membrane protein . Mitochondrion membrane ; Peripheral membrane protein . Endosome . Cytoplasmic vesicle, autophagosome . Interaction with ATG14 promotes translocation to autophagosomes. Expressed in dendrites and cell bodies of cerebellar Purkinje cells (By similarity). .; [Beclin-1-C 35 kDa]: Mitochondrion . Nucleus . Cytoplasm .; [Beclin-1-C 37 kDa]: Mitochondrion .</p>
<b>Expression :</b>	Ubiquitous.

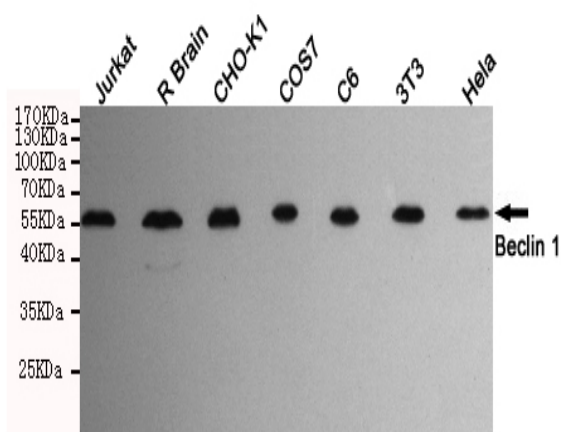
## Products Images



Deng, Z., Sun, M., Wu, J. et al. SIRT1 attenuates sepsis-induced acute kidney injury via Beclin1 deacetylation-mediated autophagy activation. *Cell Death Dis* 12, 217 (2021).



Deng, Z., Sun, M., Wu, J. et al. SIRT1 attenuates sepsis-induced acute kidney injury via Beclin1 deacetylation-mediated autophagy activation. *Cell Death Dis* 12, 217 (2021).



Western blot detection of Beclin 1 in HeLa,3T3,C6,COS7,CHO-K1,Rat brain and Jurkat cell lysates using Beclin 1 mouse mAb (1:1000 diluted).Predicted band size:52KDa.Observed band size:55KDa.