

## THAP11 Monoclonal Antibody

<b>Catalog No :</b>	YM0617
<b>Reactivity :</b>	Human
<b>Applications :</b>	WB;IHC;IF;FCM;ELISA
<b>Target :</b>	THAP11
<b>Gene Name :</b>	THAP11
<b>Protein Name :</b>	THAP domain-containing protein 11
<b>Human Gene Id :</b>	57215
<b>Human Swiss Prot No :</b>	Q96EK4
<b>Mouse Swiss Prot No :</b>	Q9JJD0
<b>Immunogen :</b>	Purified recombinant fragment of human THAP11 expressed in E. Coli.
<b>Specificity :</b>	THAP11 Monoclonal Antibody detects endogenous levels of THAP11 protein.
<b>Formulation :</b>	Liquid in PBS containing 50% glycerol, 0.5% BSA and 0.02% sodium azide.
<b>Source :</b>	Monoclonal, Mouse
<b>Dilution :</b>	WB 1:500 - 1:2000. IHC 1:200 - 1:1000. IF 1:200 - 1:1000. Flow cytometry: 1:200 - 1:400. ELISA: 1:10000. Not yet tested in other applications.
<b>Purification :</b>	Affinity purification
<b>Storage Stability :</b>	-15°C to -25°C/1 year(Do not lower than -25°C)
<b>Molecularweight :</b>	34kD
<b>P References :</b>	1. Genomics. 1993 Jun;16(3):572-9. 2. Cell. 2008 Jun 27;133(7):1162-74. 3. Cell Death Differ. 2009 Mar;16(3):395-405.

## Background :

The protein encoded by this gene contains a THAP domain, which is a conserved DNA-binding domain that has striking similarity to the site-specific DNA-binding domain (DBD) of Drosophila P element transposases. [provided by RefSeq, Jul 2008],

## Function :

function:Transcriptional repressor that plays a central role for embryogenesis and the pluripotency of embryonic stem (ES) cells. Sequence-specific DNA-binding factor that represses gene expression in pluripotent ES cells by directly binding to key genetic loci and recruiting epigenetic modifiers.,polymorphism:The length of the poly-Gln region is variable in the population.,similarity:Belongs to the THAP11 family.,similarity:Contains 1 THAP-type zinc finger.,subcellular location:May be regulated by shuttling of the protein between the cytoplasm and nucleus.,subunit:Interacts (via coiled coil domain) with HCFC1.,

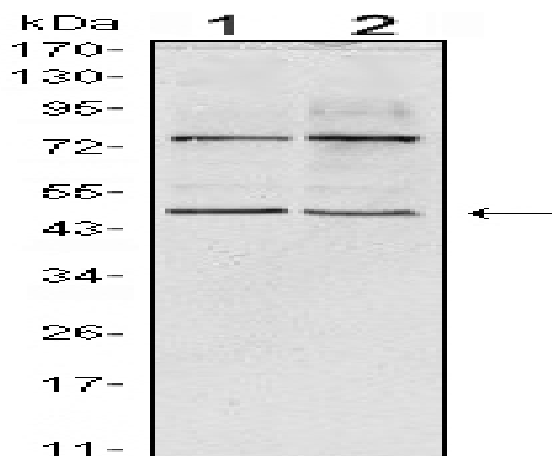
## Subcellular Location :

Nucleus . Cytoplasm . May be regulated by shuttling of the protein between the cytoplasm and nucleus. .

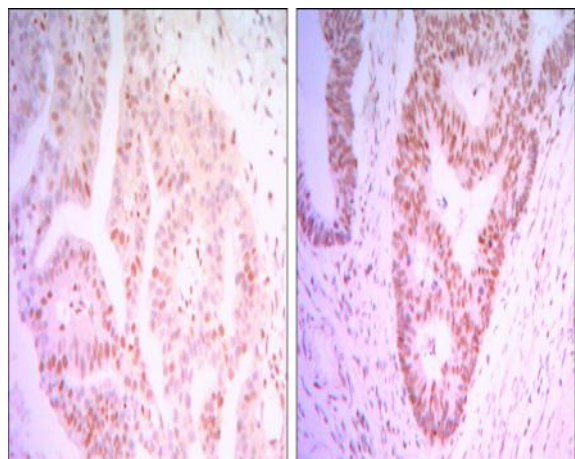
## Expression :

Brain,Neuroblastoma,Uterus,

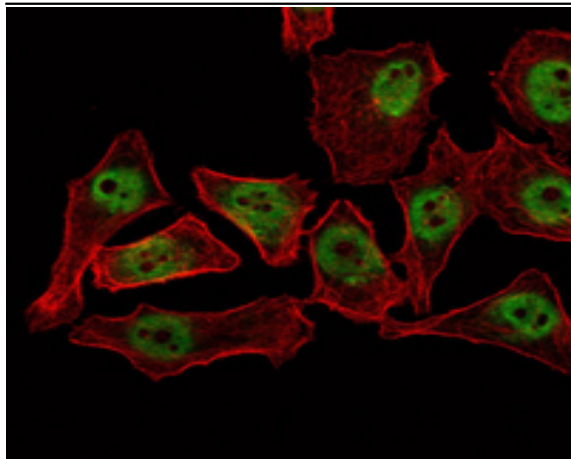
## Products Images



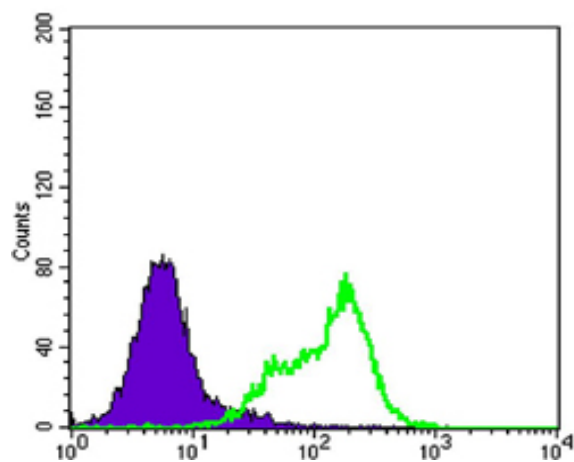
Western Blot analysis using THAP11 Monoclonal Antibody against HeLa (1) and NTERA-2 (2) cell lysate.



Immunohistochemistry analysis of paraffin-embedded colon cancer tissues (left) and ovary cancer tissues (right) with DAB staining using THAP11 Monoclonal Antibody.



Immunofluorescence analysis of NTERA-2 cells using THAP11 Monoclonal Antibody (green). Red: Actin filaments have been labeled with Alexa Fluor-555 phalloidin.



Flow cytometric analysis of Hela cells using THAP11 Monoclonal Antibody (green) and negative control (purple).