

## ERK 3 Monoclonal Antibody

<b>Catalog No :</b>	YM0246
<b>Reactivity :</b>	Human
<b>Applications :</b>	WB;FCM;ELISA
<b>Target :</b>	ERK 3
<b>Fields :</b>	>>IL-17 signaling pathway
<b>Gene Name :</b>	MAPK6
<b>Protein Name :</b>	Mitogen-activated protein kinase 6
<b>Human Gene Id :</b>	5597
<b>Human Swiss Prot No :</b>	Q16659
<b>Mouse Swiss Prot No :</b>	Q61532
<b>Immunogen :</b>	Purified recombinant fragment of human ERK 3 expressed in E. Coli.
<b>Specificity :</b>	ERK 3 Monoclonal Antibody detects endogenous levels of ERK 3 protein.
<b>Formulation :</b>	Liquid in PBS containing 50% glycerol, 0.5% BSA and 0.02% sodium azide.
<b>Source :</b>	Monoclonal, Mouse
<b>Dilution :</b>	WB 1:500 - 1:2000. Flow cytometry: 1:200 - 1:400. ELISA: 1:10000. Not yet tested in other applications.
<b>Purification :</b>	Affinity purification
<b>Storage Stability :</b>	-15°C to -25°C/1 year(Do not lower than -25°C)
<b>Molecularweight :</b>	83kD

## P References :

1. J Cell Physiol. 2008 Dec;217(3):778-88.
2. Proc Natl Acad Sci U S A. 2009 Sep 29;106(39):16710-5.

## Background :

The protein encoded by this gene is a member of the Ser/Thr protein kinase family, and is most closely related to mitogen-activated protein kinases (MAP kinases). MAP kinases also known as extracellular signal-regulated kinases (ERKs), are activated through protein phosphorylation cascades and act as integration points for multiple biochemical signals. This kinase is localized in the nucleus, and has been reported to be activated in fibroblasts upon treatment with serum or phorbol esters. [provided by RefSeq, Jul 2008],

## Function :

catalytic activity:ATP + a protein = ADP + a phosphoprotein.,cofactor:Magnesium.,domain:The TXY motif contains the threonine and tyrosine residues whose phosphorylation activates the MAP kinases.,enzyme regulation:Activated by threonine and tyrosine phosphorylation.,function:Phosphorylates microtubule-associated protein 2 (MAP2). May promote entry in the cell cycle.,PTM:Dually phosphorylated on Thr-626 and Tyr-628, which activates the enzyme.,similarity:Belongs to the protein kinase superfamily. CMGC Ser/Thr protein kinase family. MAP kinase subfamily.,similarity:Contains 1 protein kinase domain.,tissue specificity:Highest expression in the skeletal muscle, followed by the brain. Also found in heart, placenta, lung, liver, pancreas, kidney and skin fibroblasts.,

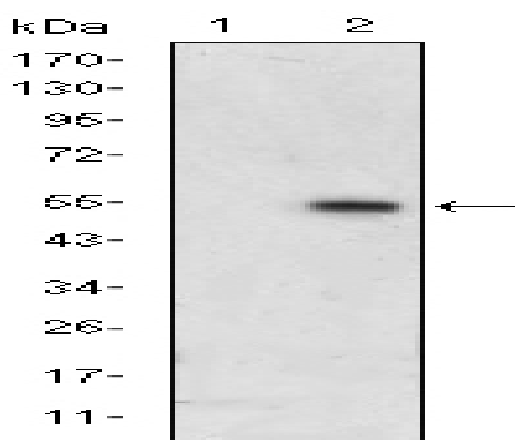
## Subcellular Location :

Cytoplasm . Nucleus . Translocates to the cytoplasm following interaction with MAPKAPK5. .

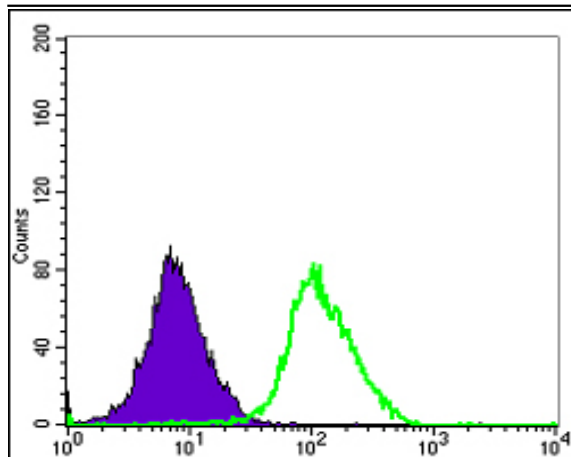
## Expression :

Highest expression in the skeletal muscle, followed by the brain. Also found in heart, placenta, lung, liver, pancreas, kidney and skin fibroblasts.

## Products Images



Western Blot analysis using ERK 3 Monoclonal Antibody against HEK293 (1) and ERK3-hlgFc transfected HEK293 (2) cell lysate.



Flow cytometric analysis of Hela cells using ERK 3 Monoclonal Antibody (green) and negative control (purple).

