

NGB Polyclonal Antibody

Catalog No :	YN0963
Reactivity :	Human;Rat;Mouse
Applications :	WB;ELISA
Target :	NGB
Gene Name :	NGB
Protein Name :	Neuroglobin
Human Gene Id :	58157
Human Swiss Prot No :	Q9NPG2
Mouse Swiss Prot No :	Q9ER97
Rat Swiss Prot No :	Q99JA8
Immunogen :	Synthesized peptide derived from human protein . at AA range: 50-130
Specificity :	NGB Polyclonal Antibody detects endogenous levels of protein.
Formulation :	Liquid in PBS containing 50% glycerol, and 0.02% sodium azide.
Source :	Polyclonal, Rabbit,IgG
Dilution :	WB 1:500-2000 ELISA 1:5000-20000
Purification :	The antibody was affinity-purified from rabbit antiserum by affinity-chromatography using epitope-specific immunogen.
Concentration :	1 mg/ml
Storage Stability :	-15°C to -25°C/1 year(Do not lower than -25°C)

Observed Band : 16kD

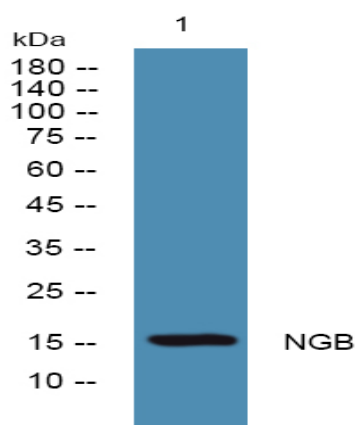
Background : This gene encodes an oxygen-binding protein that is distantly related to members of the globin gene family. It is highly conserved among other vertebrates. It is expressed in the central and peripheral nervous system where it may be involved in increasing oxygen availability and providing protection under hypoxic/ischemic conditions. [provided by RefSeq, Jul 2008],

Function : function:Involved in oxygen transport in the brain.,online information:Neuroglobin entry,similarity:Belongs to the globin family.,subunit:Monomer.,tissue specificity:Predominantly expressed in brain, the strongest expression is seen in the frontal lobe, the subthalamic nucleus and the thalamus.,

Subcellular Location : Perikaryon . Cytoplasm. Mitochondrion.

Expression : Predominantly expressed in brain, the strongest expression is seen in the frontal lobe, the subthalamic nucleus and the thalamus.

Products Images



Western blot analysis of lysates from A431 cells, primary antibody was diluted at 1:1000, 4° over night