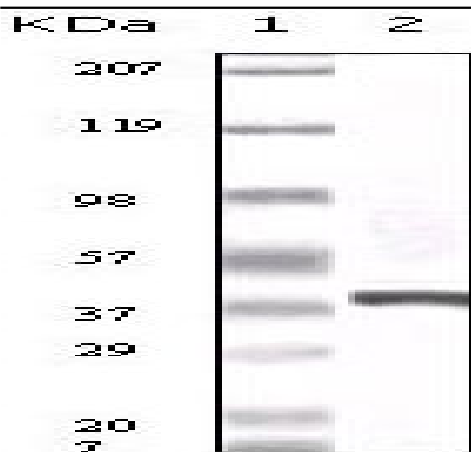


Calcyclin Monoclonal Antibody

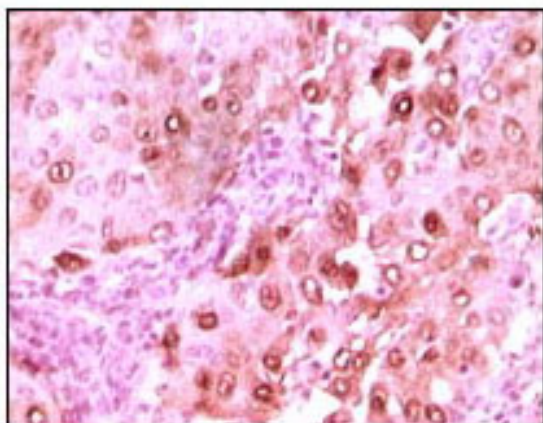
Catalog No :	YM0088
Reactivity :	Human
Applications :	WB;IHC;IF;ELISA
Target :	Calcyclin
Fields :	>>Wnt signaling pathway
Gene Name :	CACYBP
Protein Name :	Calcyclin-binding protein
Human Gene Id :	27101
Human Swiss Prot No :	Q9HB71
Mouse Swiss Prot No :	Q9CXW3
Immunogen :	Purified recombinant fragment of Calcyclin expressed in E. Coli.
Specificity :	Calcyclin Monoclonal Antibody detects endogenous levels of Calcyclin protein.
Formulation :	Liquid in PBS containing 50% glycerol, 0.5% BSA and 0.02% sodium azide.
Source :	Monoclonal, Mouse
Dilution :	WB 1:500 - 1:2000. IHC 1:200 - 1:1000. ELISA: 1:10000.. IF 1:50-200
Purification :	Affinity purification
Concentration :	1 mg/ml
Storage Stability :	-15°C to -25°C/1 year(Do not lower than -25°C)
Molecularweight :	26kD

Cell Pathway :	WNT;WNT-T CELL
P References :	<ol style="list-style-type: none"> 1. Bean C.et.al J Mol Biol. 2005 Jun 3;349(2):349-66. 2. HWang R.et.al J Biol Chem. 2004 May 14;279(20):21239-47.
Background :	<p>The protein encoded by this gene is a calcyclin binding protein. It may be involved in calcium-dependent ubiquitination and subsequent proteosomal degradation of target proteins. It probably serves as a molecular bridge in ubiquitin E3 complexes and participates in the ubiquitin-mediated degradation of beta-catenin. Two alternatively spliced transcript variants encoding different isoforms have been found for this gene. [provided by RefSeq, Jul 2008],</p>
Function :	<p>function:May be involved in calcium-dependent ubiquitination and subsequent proteosomal degradation of target proteins. Probably serves as a molecular bridge in ubiquitin E3 complexes. Participates in the ubiquitin-mediated degradation of beta-catenin (CTNNB1).,PTM:Phosphorylated on serine residues. Phosphorylated upon induction by RA or at high calcium concentrations.,similarity:Contains 1 CS domain.,similarity:Contains 1 SGS domain.,subcellular location:Cytoplasmic at low calcium concentrations. In neuroblastoma cells, after a retinoic acid (RA) induction and calcium increase, it localizes in both the nucleus and cytoplasm. The nuclear fraction may be phosphorylated.,subunit:Interacts with protein of the S100 family S100A1, S100A6, S100B, S100P and S100A12 at physiological calcium concentrations (By similarity). Component of some large E3 complex at least composed of UBE2D1, SIAH1, CAC</p>
Subcellular Location :	<p>Nucleus . Cytoplasm . Cytoplasmic at low calcium concentrations. In neuroblastoma cells, after a retinoic acid (RA) induction and calcium increase, it localizes in both the nucleus and cytoplasm. The nuclear fraction may be phosphorylated.</p>
Expression :	Brain,Colon carcinoma,Hepatoma,Liver,Promyelocytic leukemia,Skeletal muscle

Products Images



Western Blot analysis using Calcyclin Monoclonal Antibody against truncated calcyclin recombinant protein.



Immunohistochemistry analysis of paraffin-embedded human brain glioma tissue showing nuclear localization with DAB staining using Calcyclin Monoclonal Antibody.