

## PASK (Phospho Thr1165) rabbit pAb

<b>Catalog No :</b>	YP1742
<b>Reactivity :</b>	Human;Mouse;Rat
<b>Applications :</b>	WB
<b>Target :</b>	PASK
<b>Gene Name :</b>	PASK KIAA0135
<b>Protein Name :</b>	PASK (Phospho-Thr1165)
<b>Human Gene Id :</b>	23178
<b>Human Swiss Prot No :</b>	Q96RG2
<b>Mouse Gene Id :</b>	269224
<b>Mouse Swiss Prot No :</b>	Q8CEE6
<b>Immunogen :</b>	Synthesized peptide derived from human PASK (Phospho-Thr1165)
<b>Specificity :</b>	This antibody detects endogenous levels of PASK (Phospho-Thr1165) at Human, Mouse,Rat
<b>Formulation :</b>	Liquid in PBS containing 50% glycerol, 0.5% BSA and 0.02% sodium azide.
<b>Source :</b>	Polyclonal, Rabbit,IgG
<b>Dilution :</b>	WB 1:500-2000
<b>Purification :</b>	The antibody was affinity-purified from rabbit serum by affinity-chromatography using specific immunogen.
<b>Concentration :</b>	1 mg/ml
<b>Storage Stability :</b>	-15°C to -25°C/1 year(Do not lower than -25°C)

**Molecularweight :** 146kD

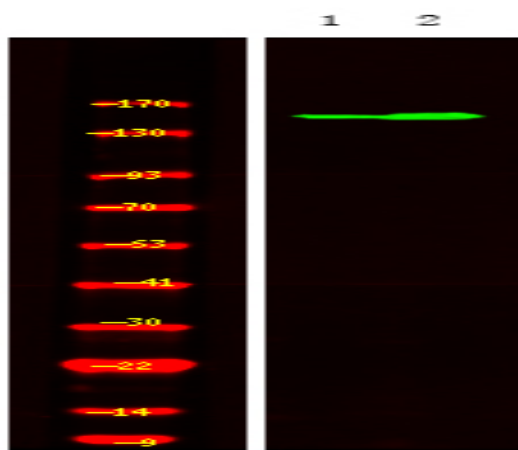
**Background :** This gene encodes a member of the serine/threonine kinase family that contains two PAS domains. Expression of this gene is regulated by glucose, and the encoded protein plays a role in the regulation of insulin gene expression. Downregulation of this gene may play a role in type 2 diabetes. Alternatively spliced transcript variants encoding multiple isoforms have been observed for this gene. [provided by RefSeq, Nov 2011],

**Function :** catalytic activity:ATP + a protein = ADP + a phosphoprotein.,enzyme regulation:Activated by autophosphorylation on Thr-1161 and Thr-1165 and inhibited by the first PAS domain.,PTM:Autophosphorylated on Thr-1161 and Thr-1165.,similarity:Belongs to the protein kinase superfamily. CAMK Ser/Thr protein kinase family.,similarity:Contains 1 protein kinase domain.,similarity:Contains 2 PAS (PER-ARNT-SIM) domains.,tissue specificity:Ubiquitously expressed, with slightly higher expression in brain, prostate and testis. Reduced expression was found in placenta.,

**Subcellular Location :** Cytoplasm . Nucleus . Localizes in the nucleus of testis germ cells and in the midpiece of sperm tails.

**Expression :** Ubiquitously expressed, with slightly higher expression in brain, prostate and testis. Reduced expression was found in placenta. Present in germ cells of testis and in the midpiece of sperm tails (at protein level).

## Products Images



Western Blot analysis of 1 Jurkat cell 2 LPS 100ng/mL 30min treated ,using primary antibody at 1:1000 dilution. Secondary antibody(catalog#:RS23920) was diluted at 1:10000