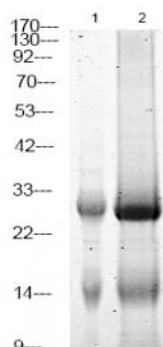


LAB (Phospho Tyr136) rabbit pAb

Catalog No :	YP1719
Reactivity :	Human;Mouse;Rat
Applications :	WB
Target :	LAB
Gene Name :	LAT2 LAB NTAL WBS15 WBSCR15 WBSCR5 HSPC046
Protein Name :	LAB (Phospho-Tyr136)
Human Gene Id :	7462
Human Swiss Prot No :	Q9GZY6
Mouse Gene Id :	56743
Mouse Swiss Prot No :	Q9JHL0
Rat Gene Id :	317676
Rat Swiss Prot No :	Q8CGL2
Immunogen :	Synthesized peptide derived from human LAB (Phospho-Tyr136)
Specificity :	This antibody detects endogenous levels of LAB (Phospho-Tyr136) at Human, Mouse,Rat
Formulation :	Liquid in PBS containing 50% glycerol, 0.5% BSA and 0.02% sodium azide.
Source :	Polyclonal, Rabbit,IgG
Dilution :	WB 1:500-2000
Purification :	The antibody was affinity-purified from rabbit serum by affinity-chromatography using specific immunogen.

Concentration :	1 mg/ml
Storage Stability :	-15°C to -25°C/1 year(Do not lower than -25°C)
Observed Band :	30kD
Background :	This gene is one of the contiguous genes at 7q11.23 commonly deleted in Williams syndrome, a multisystem developmental disorder. This gene consists of at least 14 exons, and its alternative splicing generates 3 transcript variants, all encoding the same protein. [provided by RefSeq, Jul 2008],
Function :	disease:Defects in LAT2 may be a cause of certain cardiovascular and musculo-skeletal abnormalities observed in Williams-Beuren syndrome (WBS) [MIM:194050]. WBS is a rare developmental disorder. It is a contiguous gene deletion syndrome involving genes from chromosome band 7q11.23.,function:Involved in FCER1 (high affinity immunoglobulin epsilon receptor)-mediated signaling in mast cells. May also be involved in BCR (B-cell antigen receptor)-mediated signaling in B-cells and FCGR1 (high affinity immunoglobulin gamma Fc receptor I)-mediated signaling in myeloid cells. Couples activation of these receptors and their associated kinases with distal intracellular events through the recruitment of GRB2.,PTM:May be polyubiquitinated.,PTM:Phosphorylated on tyrosines following cross-linking of BCR in B-cells, FCGR1 in myeloid cells, or FCER1 in mast cells; which induces the recruitment of GRB2.,s
Subcellular Location :	Cell membrane ; Single-pass type III membrane protein . Present in lipid rafts.
Expression :	Highly expressed in spleen, peripheral blood lymphocytes, and germinal centers of lymph nodes. Also expressed in placenta, lung, pancreas and small intestine. Present in B-cells, NK cells and monocytes. Absent from T-cells (at protein level).

Products Images



Western Blot analysis of 1 HepG2 cell, 2 Serum-free treated ,using primary antibody at 1:1000 dilution. Secondary antibody(catalog#:RS23920) was diluted at 1:10000