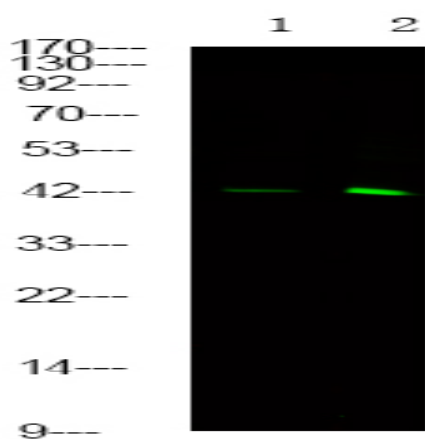


SPHK1 (Phospho Ser225) rabbit pAb

Catalog No :	YP1683
Reactivity :	Human;Mouse;Rat
Applications :	WB
Target :	SPHK1
Fields :	>>Sphingolipid metabolism;>>Metabolic pathways;>>Calcium signaling pathway;>>Sphingolipid signaling pathway;>>Phospholipase D signaling pathway;>>VEGF signaling pathway;>>Apelin signaling pathway;>>Fc gamma R-mediated phagocytosis;>>Tuberculosis
Gene Name :	SPHK1 SPHK SPK
Protein Name :	SPHK1 (Phospho-Ser225)
Human Gene Id :	8877
Human Swiss Prot No :	Q9NYA1
Mouse Gene Id :	20698
Mouse Swiss Prot No :	Q8CI15
Rat Gene Id :	170897
Rat Swiss Prot No :	Q91V26
Immunogen :	Synthesized peptide derived from human SPHK1 (Phospho-Ser225)
Specificity :	This antibody detects endogenous levels of SPHK1 (Phospho-Ser225) at Human, Mouse,Rat
Formulation :	Liquid in PBS containing 50% glycerol, 0.5% BSA and 0.02% sodium azide.
Source :	Polyclonal, Rabbit,IgG

Dilution :	WB 1:500-2000
Purification :	The antibody was affinity-purified from rabbit serum by affinity-chromatography using specific immunogen.
Concentration :	1 mg/ml
Storage Stability :	-15 °C to -25 °C/1 year(Do not lower than -25 °C)
Observed Band :	42kD
Background :	The protein encoded by this gene catalyzes the phosphorylation of sphingosine to form sphingosine-1-phosphate (S1P), a lipid mediator with both intra- and extracellular functions. Intracellularly, S1P regulates proliferation and survival, and extracellularly, it is a ligand for cell surface G protein-coupled receptors. This protein, and its product S1P, play a key role in TNF-alpha signaling and the NF-kappa-B activation pathway important in inflammatory, antiapoptotic, and immune processes. Alternatively spliced transcript variants encoding different isoforms have been found for this gene. [provided by RefSeq, Sep 2011],
Function :	catalytic activity:ATP + sphinganine = ADP + sphinganine 1-phosphate.,catalytic activity:ATP + sphingosine = ADP + sphingosine 1-phosphate.,cofactor:Magnesium.,function:Catalyzes the phosphorylation of sphingosine to form sphingosine 1-phosphate (SPP), a lipid mediator with both intra-and extracellular functions. Also acts on D-erythro-sphingosine and to a lesser extent sphinganine, but not other lipids, such as D,L-threo-dihydrosphingosine, N,N-dimethylsphingosine, diacylglycerol, ceramide, or phosphatidylinositol.,similarity:Contains 1 DAGKc domain.,subunit:Interacts with ACY1 (By similarity). Binds to calmodulin. Interacts with SPHKAP.,tissue specificity:Widely expressed with highest levels in adult liver, kidney, heart and skeletal muscle.,
Subcellular Location :	Cytoplasm . Nucleus . Cell membrane . Endosome membrane ; Peripheral membrane protein . Membrane, clathrin-coated pit . Cell junction, synapse . Translocated from the cytoplasm to the plasma membrane in a CIB1-dependent manner (PubMed:19854831). Binds to membranes containing negatively charged lipids but not neutral lipids (PubMed:24929359). Recruited to endocytic membranes by sphingosine where promotes membrane fusion (By similarity). .
Expression :	Widely expressed with highest levels in adult liver, kidney, heart and skeletal muscle. Expressed in brain cortex (at protein level) (PubMed:29662056).

Products Images



Western Blot analysis of 1 MCF-7 cell, 2 LPS 100ng/mL 30min treated ,using primary antibody at 1:1000 dilution. Secondary antibody(catalog#:RS23920) was diluted at 1:10000