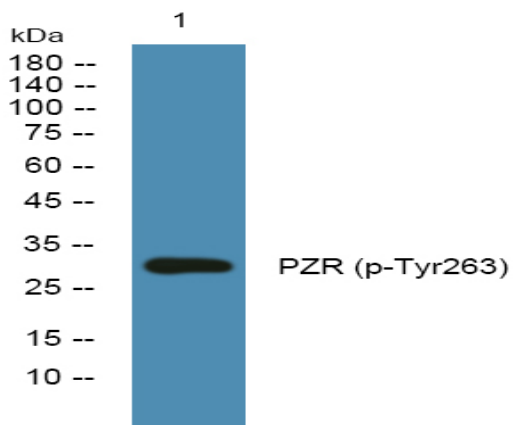


PZR (Phospho Tyr263) rabbit pAb

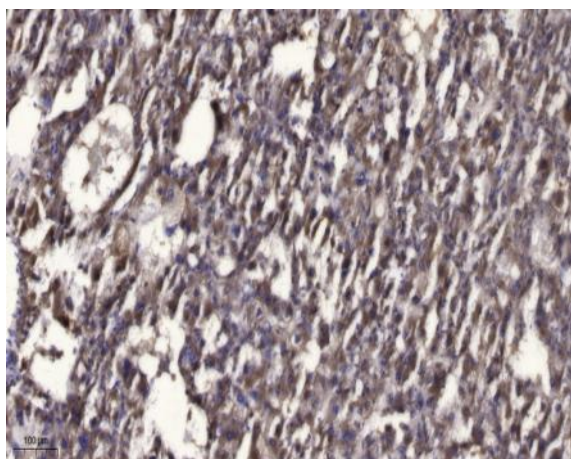
Catalog No :	YP1455
Reactivity :	Human;Mouse;Rat
Applications :	WB;ELISA;IHC
Target :	PZR
Fields :	>>Cell adhesion molecules
Gene Name :	MPZL1 PZR UNQ849/PRO1787
Protein Name :	PZR (Tyr263)
Human Gene Id :	9019
Human Swiss Prot No :	O95297
Mouse Gene Id :	68481
Mouse Swiss Prot No :	Q3TEW6
Rat Gene Id :	360871
Rat Swiss Prot No :	Q6AYT8
Immunogen :	Synthesized phospho peptide around human PZR (Tyr263)
Specificity :	This antibody detects endogenous levels of Human Mouse Rat PZR (phospho-Tyr263)
Formulation :	Liquid in PBS containing 50% glycerol, 0.5% BSA and 0.02% sodium azide.
Source :	Polyclonal, Rabbit,IgG
Dilution :	WB 1:500-2000;IHC 1:50-300; ELISA 2000-20000

Purification :	The antibody was affinity-purified from rabbit serum by affinity-chromatography using specific immunogen.
Concentration :	1 mg/ml
Storage Stability :	-15°C to -25°C/1 year(Do not lower than -25°C)
Observed Band :	30kD
Function :	domain:Contains 2 copies of a cytoplasmic motif that is referred to as the immunoreceptor tyrosine-based inhibitor motif (ITIM). This motif is involved in modulation of cellular responses. The phosphorylated ITIM motif can bind the SH2 domain of several SH2-containing phosphatases.,function:Cell surface receptor, which is involved in signal transduction processes. Recruits PTPN11/SHP-2 to the cell membrane and is a putative substrate of PTPN11/SHP-2. Is a major receptor for concanavalin A (ConA) and is involved in cellular signaling induced by ConA, which probably includes Src family tyrosine-protein kinases. Isoform 3 seems to have a dominant negative role; it blocks tyrosine phosphorylation of MPZL1 induced by ConA. Isoform 1, but not isoform 2 and isoform 3, may be involved in regulation of integrin-mediated cell motility.,PTM:N-glycosylated.,PTM:Phosphorylated on tyrosine residues up
Subcellular Location :	Membrane ; Single-pass type I membrane protein .
Expression :	Widely expressed with highest levels in heart, placenta, kidney and pancreas. Isoform 3 is relatively abundant in hematopoietic tissues and fetal liver. Isoform 1 and isoform 3 are expressed in CD14- PB monocytes and pre-B cell progenitors. Isoform 3 appears to be the major isoform in CD34- promyelocytic and promonocytic cells. During differentiation in monocytic cells, the expression level of isoform 3 decreases and that of isoform 1 increases. Isoform 1 is prominent in stromal cells and, to a lesser extent, in umbilical vein endothelial cells and erythroid progenitors. Isoform 2 is expressed in a erythroid progenitor cell line.

Products Images



Western blot analysis of lysates from SH-SY5Y cells, primary antibody was diluted at 1:1000, 4° over night



Immunohistochemical analysis of paraffin-embedded human liver cancer. 1, Antibody was diluted at 1:200(4° overnight). 2, Tris-EDTA,pH9.0 was used for antigen retrieval. 3,Secondary antibody was diluted at 1:200(room temperature, 45min).