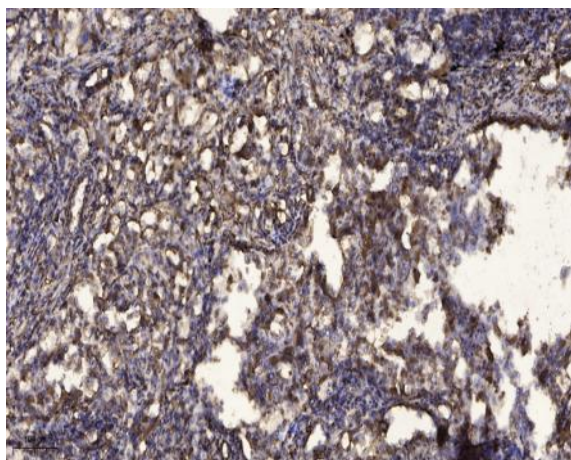


PDK1 (Phospho Tyr243) rabbit pAb

Catalog No :	YP1632
Reactivity :	Human;Mouse;Rat
Applications :	WB;ELISA;IHC
Target :	PDK1
Fields :	>>HIF-1 signaling pathway;>>Central carbon metabolism in cancer
Gene Name :	PDK1 PDHK1
Protein Name :	PDHK1 (Phospho Tyr243)
Human Gene Id :	5163
Human Swiss Prot No :	Q15118
Mouse Gene Id :	228026
Mouse Swiss Prot No :	Q8BFP9
Rat Swiss Prot No :	Q63065
Immunogen :	Synthesized peptide derived from human PDHK1 (Phospho Tyr243)
Specificity :	This antibody detects endogenous levels of Human,Mouse,Rat PDHK1 (Phospho Tyr243)
Formulation :	Liquid in PBS containing 50% glycerol, 0.5% BSA and 0.02% sodium azide.
Source :	Polyclonal, Rabbit,IgG
Dilution :	WB 1:500-2000;IHC 1:50-300; ELISA 2000-20000
Purification :	The antibody was affinity-purified from rabbit serum by affinity-chromatography using specific immunogen.

Concentration :	1 mg/ml
Storage Stability :	-15°C to -25°C/1 year(Do not lower than -25°C)
Observed Band :	50kD
Background :	Pyruvate dehydrogenase (PDH) is a mitochondrial multienzyme complex that catalyzes the oxidative decarboxylation of pyruvate and is one of the major enzymes responsible for the regulation of homeostasis of carbohydrate fuels in mammals. The enzymatic activity is regulated by a phosphorylation/dephosphorylation cycle. Phosphorylation of PDH by a specific pyruvate dehydrogenase kinase (PDK) results in inactivation. Multiple alternatively spliced transcript variants have been found for this gene. [provided by RefSeq, Jun 2013],
Function :	catalytic activity:ATP + [pyruvate dehydrogenase (acetyl-transferring)] = ADP + [pyruvate dehydrogenase (acetyl-transferring)] phosphate.,function:Inhibits the mitochondrial pyruvate dehydrogenase complex by phosphorylation of the E1 alpha subunit, thus contributing to the regulation of glucose metabolism.,similarity:Belongs to the PDK/BCKDK protein kinase family.,similarity:Contains 1 histidine kinase domain.,tissue specificity:Expressed predominantly in the heart.,
Subcellular Location :	Mitochondrion matrix .
Expression :	Expressed predominantly in the heart. Detected at lower levels in liver, skeletal muscle and pancreas.

Products Images



Immunohistochemical analysis of paraffin-embedded human Squamous cell carcinoma of lung. 1, Antibody was diluted at 1:200(4° overnight). 2, Tris-EDTA,pH9.0 was used for antigen retrieval. 3,Secondary antibody was diluted at 1:200(room temperature, 45min).