

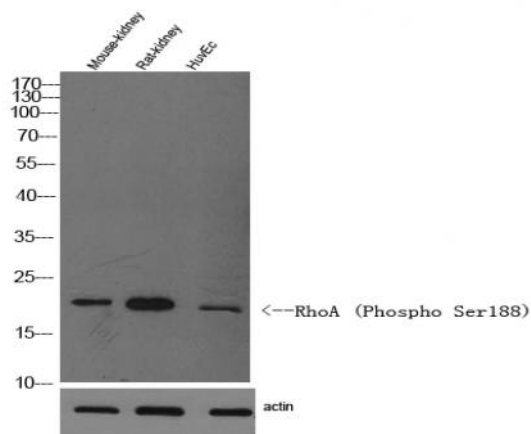
RhoA (Phospho Ser188) rabbit pAb

Catalog No :	YP1567
Reactivity :	Human;Mouse;Rat
Applications :	WB;ELISA;IHC
Target :	RhoA
Fields :	>>Ras signaling pathway;>>Rap1 signaling pathway;>>cGMP-PKG signaling pathway;>>cAMP signaling pathway;>>Chemokine signaling pathway;>>Sphingolipid signaling pathway;>>Phospholipase D signaling pathway;>>Endocytosis;>>mTOR signaling pathway;>>Vascular smooth muscle contraction;>>Wnt signaling pathway;>>TGF-beta signaling pathway;>>Axon guidance;>>Focal adhesion;>>Adherens junction;>>Tight junction;>>Platelet activation;>>NOD-like receptor signaling pathway;>>C-type lectin receptor signaling pathway;>>T cell receptor signaling pathway;>>Leukocyte transendothelial migration;>>Neurotrophin signaling pathway;>>Regulation of actin cytoskeleton;>>Oxytocin signaling pathway;>>Parathyroid hormone synthesis, secretion and action;>>Pancreatic secretion;>>Bacterial invasion of epithelial cells;>>Pathogenic Escherichia coli infection;>>Shigellosis;>>Salmonella infection;>>Pertussis;>>Yersinia infection;>>Tuberculosis;>>Human cytomegalovirus infection;>>Pathways in cancer;>>Viral carcinogenesis;>>P
Gene Name :	RHOA ARH12 ARHA RHO12
Protein Name :	RhoA (Phospho Ser188)
Human Gene Id :	387
Human Swiss Prot No :	P61586
Mouse Gene Id :	11848
Mouse Swiss Prot No :	Q9QUI0
Rat Gene Id :	117273
Rat Swiss Prot No :	P61589

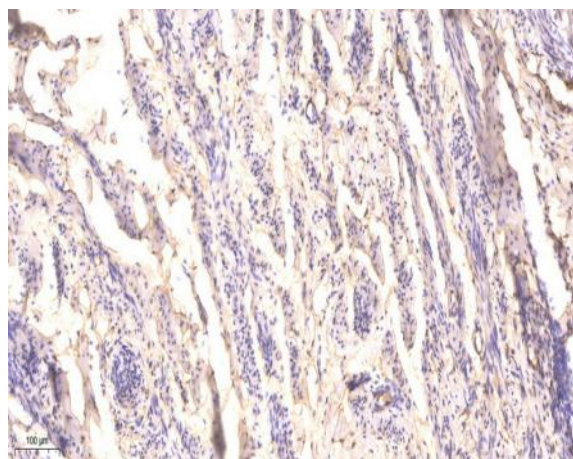
Immunogen :	Synthesized peptide derived from human RhoA (Phospho Ser188)
Specificity :	This antibody detects endogenous levels of Human,Mouse,Rat RhoA (Phospho Ser188)
Formulation :	Liquid in PBS containing 50% glycerol, 0.5% BSA and 0.02% sodium azide.
Source :	Polyclonal, Rabbit,IgG
Dilution :	WB 1:500-2000;IHC 1:50-300; ELISA 2000-20000
Purification :	The antibody was affinity-purified from rabbit serum by affinity-chromatography using specific immunogen.
Concentration :	1 mg/ml
Storage Stability :	-15°C to -25°C/1 year(Do not lower than -25°C)
Observed Band :	22kD
Background :	This gene encodes a member of the Rho family of small GTPases, which cycle between inactive GDP-bound and active GTP-bound states and function as molecular switches in signal transduction cascades. Rho proteins promote reorganization of the actin cytoskeleton and regulate cell shape, attachment, and motility. Overexpression of this gene is associated with tumor cell proliferation and metastasis. Multiple alternatively spliced variants have been identified. [provided by RefSeq, Sep 2015],
Function :	cofactor:Magnesium.,domain:The basic-rich region is essential for yopT recognition and cleavage.,function:Regulates a signal transduction pathway linking plasma membrane receptors to the assembly of focal adhesions and actin stress fibers. Serves as a target for the yopT cysteine peptidase from Yersinia pestis, vector of the plague, and Yersinia pseudotuberculosis, which causes gastrointestinal disorders. May be an activator of PLCE1. Activated by ARHGEF2, which promotes the exchange of GDP for GTP.,PTM:Cleaved by yopT protease when the cell is infected by some Yersinia pathogens. This removes the lipid attachment, and leads to its displacement from plasma membrane and to subsequent cytoskeleton cleavage.,PTM:Substrate for botulinum ADP-ribosyltransferase.,similarity:Belongs to the small GTPase superfamily. Rho family.,subunit:Interacts with RGNF (By similarity). Binds PRKCL1, ROCK1 and
Subcellular Location :	Cell membrane; Lipid-anchor; Cytoplasmic side. Cytoplasm, cytoskeleton. Cleavage furrow. Cytoplasm, cell cortex . Midbody. Cell projection, lamellipodium . Cell projection, dendrite . Nucleus . Localized to cell-cell contacts in calcium-treated keratinocytes (By similarity). Translocates to the equatorial region before

furrow formation in a ECT2-dependent manner. Localizes to the equatorial cell cortex (at the site of the presumptive furrow) in early anaphase in an activated form and in a myosin- and actin-independent manner. .

Products Images



Western Blot analysis of mouse kidney, rat kidney. Primary Antibody was diluted at 1:1000. Secondary antibody(catalog#:RS0002 was diluted at 1:10000



Immunohistochemical analysis of paraffin-embedded human cervical carcinoma. 1, Antibody was diluted at 1:200(4° overnight). 2, Tris-EDTA,pH9.0 was used for antigen retrieval. 3,Secondary antibody was diluted at 1:200(room temperature, 45min).