

## PP1α (phospho Thr320) Polyclonal Antibody

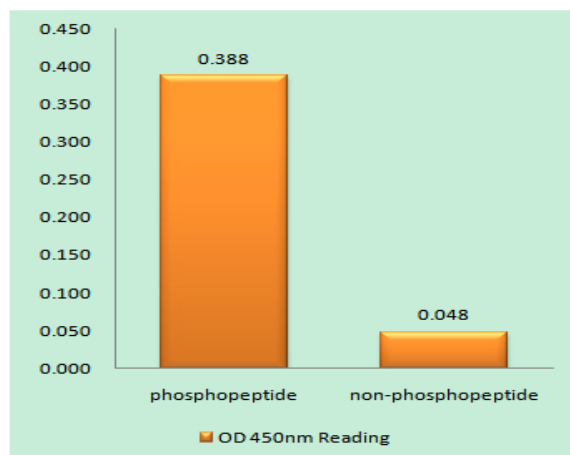
<b>Catalog No :</b>	YP0974
<b>Reactivity :</b>	Human;Mouse;Rat
<b>Applications :</b>	IHC;IF;ELISA
<b>Target :</b>	PP1α
<b>Fields :</b>	>>mRNA surveillance pathway;>>cGMP-PKG signaling pathway;>>cAMP signaling pathway;>>Oocyte meiosis;>>Cellular senescence;>>Adrenergic signaling in cardiomyocytes;>>Vascular smooth muscle contraction;>>Hippo signaling pathway;>>Focal adhesion;>>Platelet activation;>>Long-term potentiation;>>Dopaminergic synapse;>>Inflammatory mediator regulation of TRP channels;>>Regulation of actin cytoskeleton;>>Insulin signaling pathway;>>Oxytocin signaling pathway;>>Insulin resistance;>>Amphetamine addiction;>>Alcoholism;>>Herpes simplex virus 1 infection;>>Proteoglycans in cancer;>>Diabetic cardiomyopathy
<b>Gene Name :</b>	PPP1CA
<b>Protein Name :</b>	Serine/threonine-protein phosphatase PP1-alpha catalytic subunit
<b>Human Gene Id :</b>	5499
<b>Human Swiss Prot No :</b>	P62136
<b>Mouse Gene Id :</b>	19045
<b>Mouse Swiss Prot No :</b>	P62137
<b>Rat Gene Id :</b>	24668
<b>Rat Swiss Prot No :</b>	P62138
<b>Immunogen :</b>	The antiserum was produced against synthesized peptide derived from human PP1-alpha around the phosphorylation site of Thr320. AA range:281-330
<b>Specificity :</b>	Phospho-PP1α (T320) Polyclonal Antibody detects endogenous levels of PP1α protein only when phosphorylated at T320.

<b>Formulation :</b>	Liquid in PBS containing 50% glycerol, 0.5% BSA and 0.02% sodium azide.
<b>Source :</b>	Polyclonal, Rabbit,IgG
<b>Dilution :</b>	IHC 1:100 - 1:300. ELISA: 1:10000.. IF 1:50-200
<b>Purification :</b>	The antibody was affinity-purified from rabbit antiserum by affinity-chromatography using epitope-specific immunogen.
<b>Concentration :</b>	1 mg/ml
<b>Storage Stability :</b>	-15°C to -25°C/1 year(Do not lower than -25°C)
<b>Molecularweight :</b>	38kD
<b>Cell Pathway :</b>	Oocyte meiosis;Vascular smooth muscle contraction;Focal adhesion;Long-term potentiation;Regulates Actin and Cytoskeleton;Insulin_Receptor;
<b>Background :</b>	<p>The protein encoded by this gene is one of the three catalytic subunits of protein phosphatase 1 (PP1). PP1 is a serine/threonine specific protein phosphatase known to be involved in the regulation of a variety of cellular processes, such as cell division, glycogen metabolism, muscle contractility, protein synthesis, and HIV-1 viral transcription. Increased PP1 activity has been observed in the end stage of heart failure. Studies in both human and mice suggest that PP1 is an important regulator of cardiac function. Mouse studies also suggest that PP1 functions as a suppressor of learning and memory. Three alternatively spliced transcript variants encoding different isoforms have been found for this gene. [provided by RefSeq, Jul 2008],</p>
<b>Function :</b>	<p>catalytic activity:A phosphoprotein + H(2)O = a protein + phosphate.,caution:The sequence shown here is derived from an Ensembl automatic analysis pipeline and should be considered as preliminary data.,cofactor:Binds 1 iron ion per subunit.,cofactor:Binds 1 manganese ion per subunit.,enzyme regulation:The phosphatase activity of the PPP1R15A-PP1 complex toward EIF2S1 is specifically inhibited by Salubrinal, a drug that protects cells from endoplasmic reticulum stress.,function:Protein phosphatase 1 (PP1) is essential for cell division, and participates in the regulation of glycogen metabolism, muscle contractility and protein synthesis. Involved in regulation of ionic conductances and long-term synaptic plasticity. May play an important role in dephosphorylating substrates such as the postsynaptic density-associated Ca(2+)/calmodulin dependent protein kinase II.,online information:The th</p>
<b>Subcellular Location :</b>	<p>Cytoplasm . Nucleus . Nucleus, nucleoplasm . Nucleus, nucleolus . Primarily nuclear and largely excluded from the nucleolus. Highly mobile in cells and can be relocalized through interaction with targeting subunits. NOM1 plays a role in targeting this protein to the nucleolus. In the presence of PPP1R8 relocalizes from the nucleus to nuclear speckles. Shuttles toward the cytosol during infection with</p>

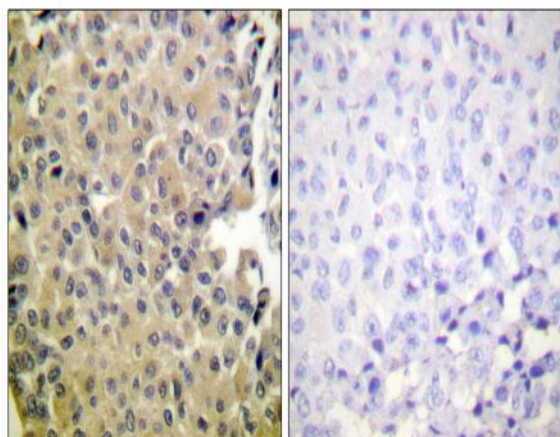
## Expression :

Colon carcinoma,Liver,Lung,Muscle,Pancreas,Placenta,Platele

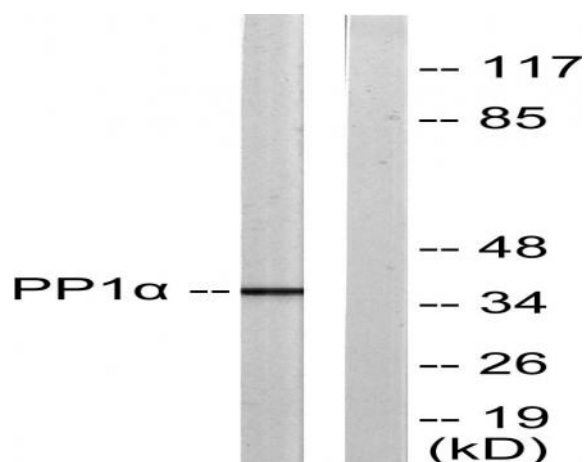
## Products Images



Enzyme-Linked Immunosorbent Assay (Phospho-ELISA) for Immunogen Phosphopeptide (Phospho-left) and Non-Phosphopeptide (Phospho-right), using PP1-alpha (Phospho-Thr320) Antibody



Immunohistochemistry analysis of paraffin-embedded human breast carcinoma, using PP1-alpha (Phospho-Thr320) Antibody. The picture on the right is blocked with the phospho peptide.



Western blot analysis of PP1-alpha (Phospho-Thr320) Antibody. The lane on the right is blocked with the PP1-alpha (Phospho-Thr320) peptide.