

## ATF-2 (phospho Ser480) Polyclonal Antibody

<b>Catalog No :</b>	YP0909
<b>Reactivity :</b>	Human;Rat
<b>Applications :</b>	WB;IHC;IF;ELISA
<b>Target :</b>	ATF-2
<b>Fields :</b>	>>MAPK signaling pathway;>>cGMP-PKG signaling pathway;>>PI3K-Akt signaling pathway;>>Longevity regulating pathway;>>Adrenergic signaling in cardiomyocytes;>>TNF signaling pathway;>>Thermogenesis;>>Dopaminergic synapse;>>Insulin secretion;>>Estrogen signaling pathway;>>Thyroid hormone synthesis;>>Glucagon signaling pathway;>>Aldosterone synthesis and secretion;>>Relaxin signaling pathway;>>Cortisol synthesis and secretion;>>Parathyroid hormone synthesis, secretion and action;>>Cushing syndrome;>>Growth hormone synthesis, secretion and action;>>Prion disease;>>Cocaine addiction;>>Amphetamine addiction;>>Alcoholism;>>Hepatitis B;>>Human cytomegalovirus infection;>>Human T-cell leukemia virus 1 infection;>>Viral carcinogenesis;>>Chemical carcinogenesis - receptor activation
<b>Gene Name :</b>	ATF2
<b>Protein Name :</b>	Cyclic AMP-dependent transcription factor ATF-2
<b>Human Gene Id :</b>	1386
<b>Human Swiss Prot No :</b>	P15336
<b>Mouse Swiss Prot No :</b>	P16951
<b>Rat Gene Id :</b>	81647
<b>Rat Swiss Prot No :</b>	Q00969
<b>Immunogen :</b>	The antiserum was produced against synthesized peptide derived from human ATF2 around the phosphorylation site of Ser480. AA range:456-505
<b>Specificity :</b>	Phospho-ATF-2 (S480) Polyclonal Antibody detects endogenous levels of

ATF-2 protein only when phosphorylated at S480.

<b>Formulation :</b>	Liquid in PBS containing 50% glycerol, 0.5% BSA and 0.02% sodium azide.
<b>Source :</b>	Polyclonal, Rabbit,IgG
<b>Dilution :</b>	WB 1:500 - 1:2000. IHC 1:100 - 1:300. IF 1:200 - 1:1000. ELISA: 1:40000. Not yet tested in other applications.
<b>Purification :</b>	The antibody was affinity-purified from rabbit antiserum by affinity-chromatography using epitope-specific immunogen.
<b>Concentration :</b>	1 mg/ml
<b>Storage Stability :</b>	-15°C to -25°C/1 year(Do not lower than -25°C)
<b>Observed Band :</b>	43kD
<b>Cell Pathway :</b>	B Cell Receptor; Stem cell pathway; MAPK_ERK_Growth;MAPK_G_Protein; Akt_PKB; Protein_Acetylation
<b>Background :</b>	<p>activating transcription factor 2(ATF2) Homo sapiens This gene encodes a transcription factor that is a member of the leucine zipper family of DNA binding proteins. The encoded protein has been identified as a moonlighting protein based on its ability to perform mechanistically distinct functions This protein binds to the cAMP-responsive element (CRE), an octameric palindrome. It forms a homodimer or a heterodimer with c-Jun and stimulates CRE-dependent transcription. This protein is also a histone acetyltransferase (HAT) that specifically acetylates histones H2B and H4 in vitro; thus it may represent a class of sequence-specific factors that activate transcription by direct effects on chromatin components. The encoded protein may also be involved in cell's DNA damage response independent of its role in transcriptional regulation. Several alternatively spliced transcript variants have been found for this gene [provided by RefSeq, Jan 2014]</p>
<b>Function :</b>	<p>caution:It is uncertain whether Met-1 or Met-19 is the initiator.,function:Transcriptional activator, probably constitutive, which binds to the cAMP-responsive element (CRE) (consensus: 5'-GTGACGT[AC][AG]-3'), a sequence present in many viral and cellular promoters. Interaction with JUN redirects JUN to bind to CRES preferentially over the 12-O-tetradecanoylphorbol-13-acetate response elements (TRES) as part of an ATF2-c-Jun complex.,PTM:Phosphorylation of Thr-69 and Thr-71 by MAPK14 causes increased transcriptional activity. Also phosphorylated and activated by JNK.,similarity:Belongs to the bZIP family.,similarity:Belongs to the bZIP family. ATF subfamily.,similarity:Contains 1 bZIP domain.,similarity:Contains 1 C2H2-type zinc finger.,subunit:Binds DNA as a dimer and can form a homodimer in the absence of DNA. Can form a heterodimer with JUN. Interacts with SMAD3</p>

and SMAD4. Binds throu

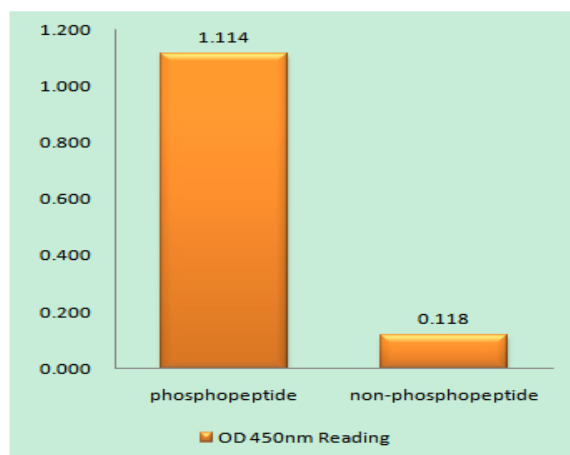
## Subcellular Location :

Nucleus. Cytoplasm. Mitochondrion outer membrane. Shuttles between the cytoplasm and the nucleus and heterodimerization with JUN is essential for the nuclear localization. Localization to the cytoplasm is observed under conditions of cellular stress and in disease states. Localizes at the mitochondrial outer membrane in response to genotoxic stress. Phosphorylation at Thr-52 is required for its nuclear localization and negatively regulates its mitochondrial localization. Co-localizes with the MRN complex in the IR-induced foci (IRIF).

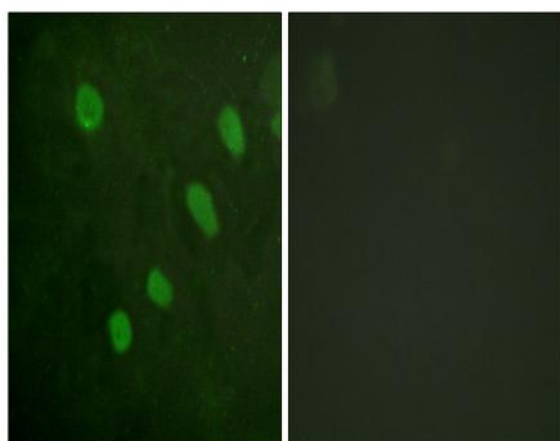
## Expression :

Ubiquitously expressed, with more abundant expression in the brain.

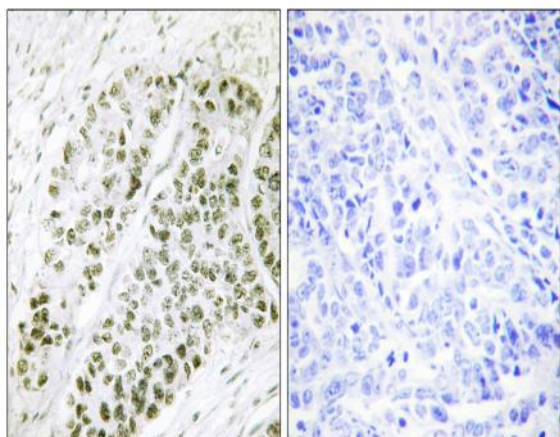
## Products Images



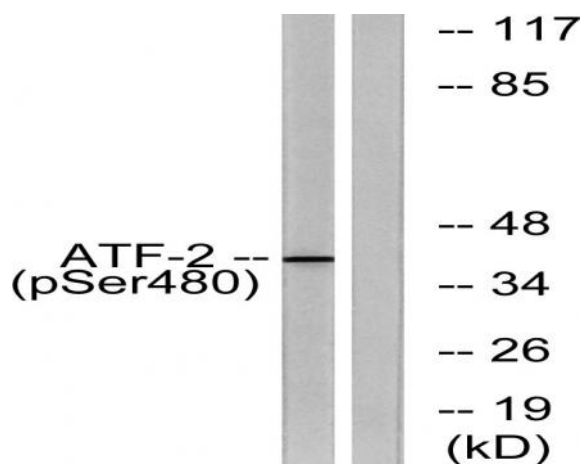
Enzyme-Linked Immunosorbent Assay (Phospho-ELISA) for Immunogen Phosphopeptide (Phospho-left) and Non-Phosphopeptide (Phospho-right), using ATF2 (Phospho-Ser480) Antibody



Immunofluorescence analysis of HeLa cells, using ATF2 (Phospho-Ser480) Antibody. The picture on the right is blocked with the phospho peptide.



Immunohistochemistry analysis of paraffin-embedded human lung carcinoma, using ATF2 (Phospho-Ser480) Antibody. The picture on the right is blocked with the phospho peptide.



Western blot analysis of lysates from HUVEC cells treated with Anisomycin 25ug/ml 30', using ATF2 (Phospho-Ser480) Antibody. The lane on the right is blocked with the phospho peptide.